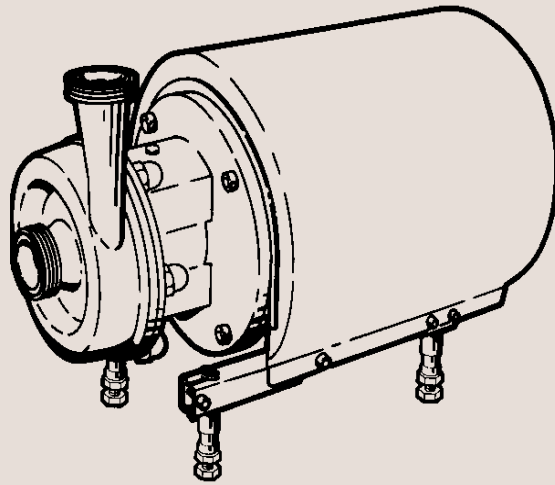




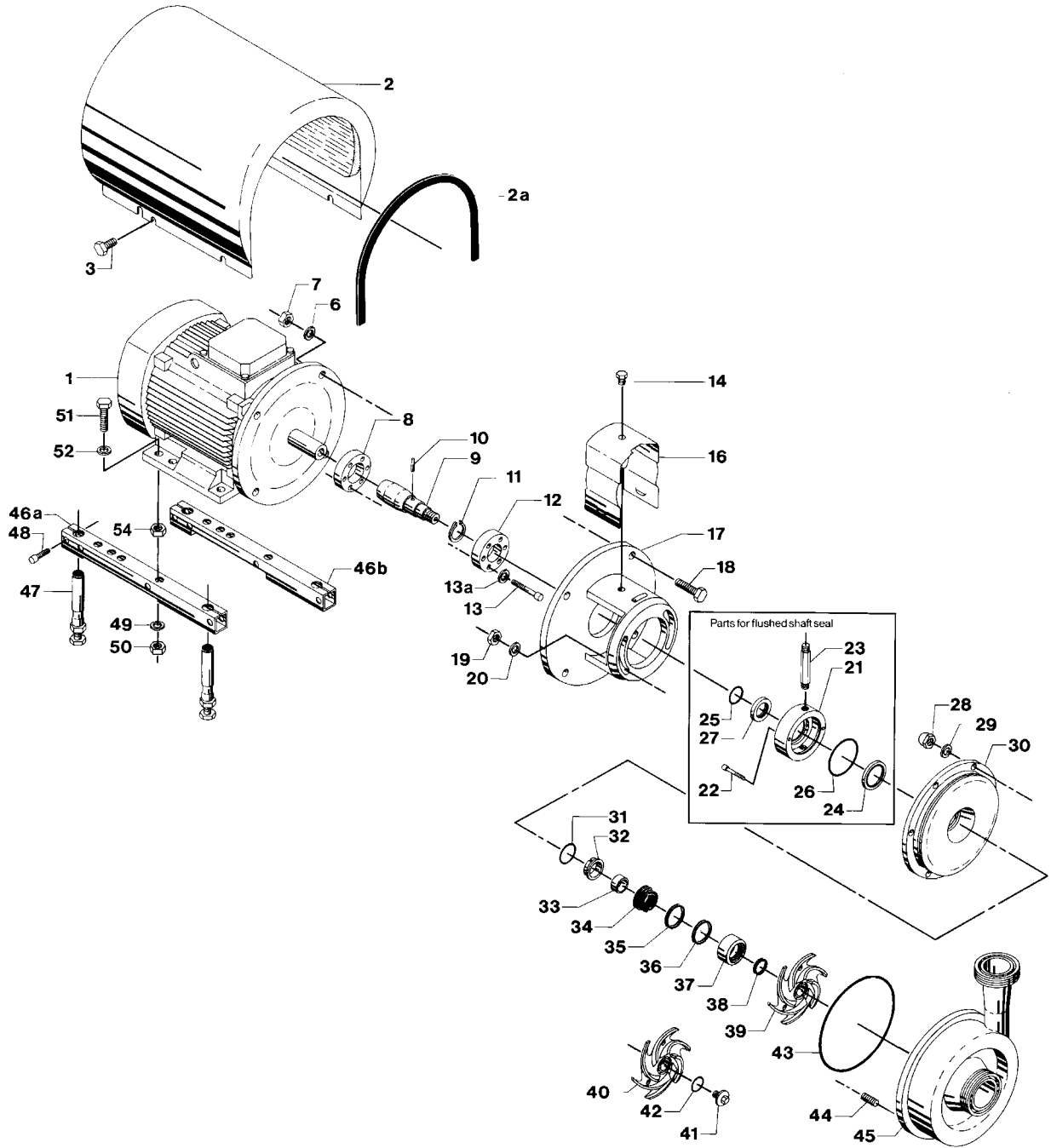
## Spare Parts

LKHI Centrifugal Pump for 16 bar Inlet Pressure



# Pump for 16 bar Inlet Pressure, Type LKHI-10 Single and Flushed Shaft Seal

2



## Pump for 16 bar Inlet Pressure, Type LKHI-10 Single and Flushed Shaft Seal

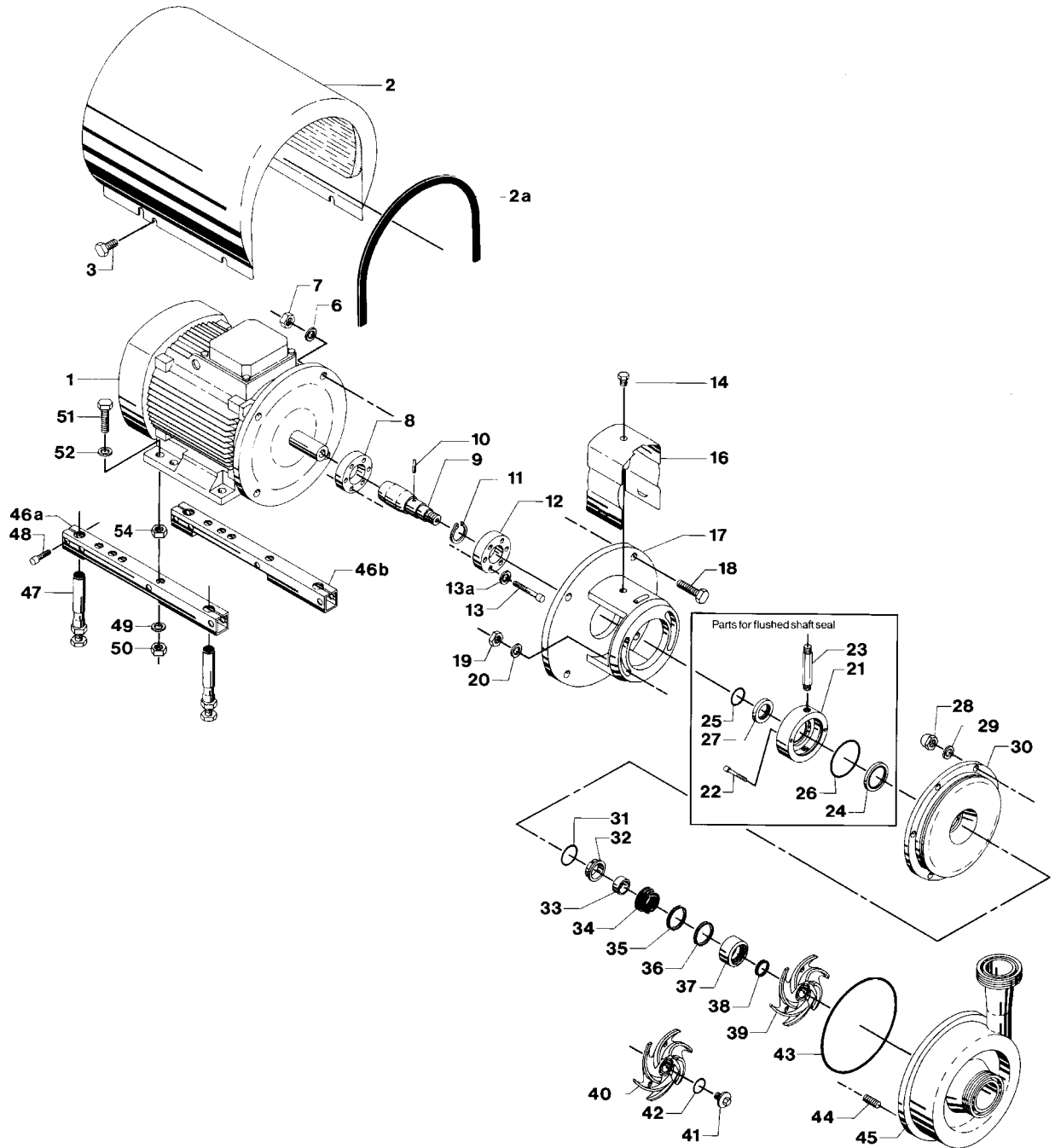
Pos.	Qty.	Denomination	1.5-2.2 kW	3 kW	4 kW
2	1	Shroud complete .....	9612-1390-01	9612-1390-02	9612-1390-03
2a	1	Edge list (Included in pos. 2) .....			
3	4	Screw .....	9611-99-3240	9611-99-3240	9611-99-3240
6	4	Washer for adaptor .....	9611-99-1887	9611-99-0676	9611-99-0676
7	4	Nut for adaptor .....	9611-99-0353	9611-99-0587	9611-99-0587
8	1	Compression ring with thread .....	9612-1336-01	9612-1336-02	9612-1336-02
9	1	Shaft with internal/external thread and pin (pos.10) .....		9612-1325-02	9612-1325-02
	1	Shaft with internal/external thread, pin (pos.10) and retaining ring (pos.11) .....	9612-1324-02		
10	1	Connex pin .....	9611-99-0622	9611-99-0622	9611-99-0622
11	1	Retaining ring .....	9611-99-2307		
12	1	Compression ring without thread .....	9612-1337-01	9612-1337-02	9612-1337-02
13	6	Screw .....	9611-99-3196	9611-99-3196	9611-99-3196
13a	6	Washer .....	9611-99-3199	9611-99-3199	9611-99-3199
14	1	Screw for safety guard .....	9611-99-3239	9611-99-3239	9611-99-3239
16	1	Safety guard .....	9612-1311-05	9612-1311-06	9612-1311-06
17	1	Adaptor .....	9612-3423-01	9612-3424-01	9612-3424-01
18	4	Screw for adaptor .....	9611-99-2161	9611-99-1834	9611-99-1834
19	2	Nut .....	9611-99-0353	9611-99-0353	9611-99-0353
20	2	Washer .....	9611-99-2559	9611-99-2559	9611-99-2559
28	6	Cap nut .....	9611-99-2592	9611-99-2592	9611-99-2592
29	6	Washer .....	9611-99-1888	9611-99-1888	9611-99-1888
30	1	Back plate .....	9612-3892-05	9612-3892-05	9612-3892-05
33	1	Spacing ring .....	9612-3625-02	9612-3625-02	9612-3625-02
37	1	Rotating seal housing .....	9612-3624-01	9612-3624-01	9612-3624-01
39	1	Impeller .....	9612-4081-07	9612-4081-01	9612-4081-01
43	□○◆★	Joint ring, EPDM, (standard) .....	9611-99-2137	9611-99-2137	9611-99-2137
	1	Joint ring, NBR .....	9611-99-2139	9611-99-2139	9611-99-2139
	1	Joint ring, FPM .....	9611-99-2138	9611-99-2139	9611-99-2139
44	6	Bolt .....	9611-99-2168	9611-99-2168	9611-99-2168
45	1	Pump casing, IDF .....	9612-1398-01	9612-1398-01	9612-1398-01
	1	Pump casing, SMS .....	9612-1398-02	9612-1398-02	9612-1398-02
	1	Pump casing, DIN .....	9612-1398-03	9612-1398-03	9612-1398-03
	1	Pump casing, ISO .....	9612-1398-04	9612-1398-04	9612-1398-04
	1	Pump casing, BS .....	9612-1398-05	9612-1398-05	9612-1398-05
	1	Pump casing, flange DN65/DN50 .....	9612-1380-01	9612-1380-01	9612-1380-01
<b>Legs</b>					
46a	1	Support bar, right .....	9612-1322-01	9612-1322-05	9612-1322-05
46b	1	Support bar, left .....	9612-1323-01	9612-1323-05	9612-1323-05
47	4	Leg .....	9612-3967-01	9612-3967-01	9612-3967-01
48	4	Screw .....	9611-99-1126	9611-99-1126	9611-99-1126
49	4	Spring washer .....	9611-99-1888	9611-99-1887	9611-99-1887
50	4	Nut .....	9611-99-0360	9611-99-0353	9611-99-0353
51	4	Screw .....	9611-99-3241	9611-99-1374	9611-99-1911
52	4	Washer .....		9611-99-0786	9611-99-0786
54	4	Nut .....		9611-99-0587	
<b>Alternatives</b>					
40	1	Impeller for impeller screw .....	9612-4081-08	9612-4081-02	9612-4081-02
41	1	Impeller screw .....	9612-1396-01	9612-1396-01	9612-1396-01
42	○★	O-ring, EPDM .....	9611-99-2145	9611-99-2145	9611-99-2145
	1	O-ring, NBR .....	9611-99-2147	9611-99-2147	9611-99-2147
	1	O-ring, FPM .....	9611-99-2146	9611-99-2146	9611-99-2146
<b>Parts for flushed shaft seal</b>					
21	1	Seal housing for flushed seal .....	9612-3626-01	9612-3626-01	9612-3626-01
22	2	Screw .....	9611-99-0203	9611-99-0203	9611-99-0203
23	2	Tube .....	9612-3589-01	9612-3589-01	9612-3589-01
27	1	Sleeve .....	9612-3629-02	9612-3629-02	9612-3629-02

**Recommended Spare Parts: Service kits.**

# Pump for 16 bar Inlet Pressure, Type LKHI-10 Single and Flushed Shaft Seal

(Same drawing as on page 2)

4



# Pump for 16 bar Inlet Pressure, Type LKHI-10 Single and Flushed Shaft Seal

Pos.	Qty.	Denomination	1.5 kW	2.2 kW	3 kW	4 kW
<b>0-10 bar</b>						
1	1	Motor, 220-240VD/380-420VY .....	31801-1982-1	31801-1983-1	31801-1984-1	9612-4028-07
	1	Motor, 380-420VD/660-690VY .....	31801-1982-2	31801-1983-2	31801-1984-2	9612-4028-09
<b>10-16 bar (Motors are with special ball bearing.)</b>						
1	1	Motor 220-240VD/380-420VY .....	9612-4189-01	9612-4189-03		9612-4189-07
	1	Motor 380-420VD/660-690VY .....	9612-4189-02	9612-4189-04		9612-4189-08

Pos.	Qty.	Denomination	1.5-4 kW
------	------	--------------	----------

**(0-10 bar)**

**Service kit for single shaft seal**

- Service kit, EPDM. .... 9611-92-2254
- Service kit, NBR. .... 9611-92-2255
- Service kit, FPM. .... 9611-92-2256

**Service kit for single shaft seal and impeller screw**

- Service kit, EPDM. .... 9611-92-2257
- Service kit, NBR. .... 9611-92-2258
- Service kit, FPM. .... 9611-92-2259

**Service kit for flushed shaft seal**

- ◆ Service kit, EPDM. .... 9611-92-2260
- ◆ Service kit, NBR. .... 9611-92-2261
- ◆ Service kit, FPM. .... 9611-92-2262

**Service kit for flushed shaft seal and impeller screw**

- \* Service kit, EPDM. .... 9611-92-2263
- \* Service kit, NBR. .... 9611-92-2264
- \* Service kit, FPM. .... 9611-92-2265

**(10-16 bar)**

**Service kit for single shaft seal**

- Service kit, EPDM. .... 9611-92-2139
- Service kit, NBR. .... 9611-92-2140
- Service kit, FPM. .... 9611-92-2141

**Service kit for single shaft seal and impeller screw**

- Service kit, EPDM. .... 9611-92-2142
- Service kit, NBR. .... 9611-92-2143
- Service kit, FPM. .... 9611-92-2144

**Service kit for flushed shaft seal**

- ◆ Service kit, EPDM. .... 9611-92-2145
- ◆ Service kit, NBR. .... 9611-92-2146
- ◆ Service kit, FPM. .... 9611-92-2147

**Service kit for flushed shaft seal and impeller screw**

- \* Service kit, EPDM. .... 9611-92-2148
- \* Service kit, NBR. .... 9611-92-2149
- \* Service kit, FPM. .... 9611-92-2150

Shaft seal: See page 38-39

Parts marked with //◆/\* are included in the service kits.

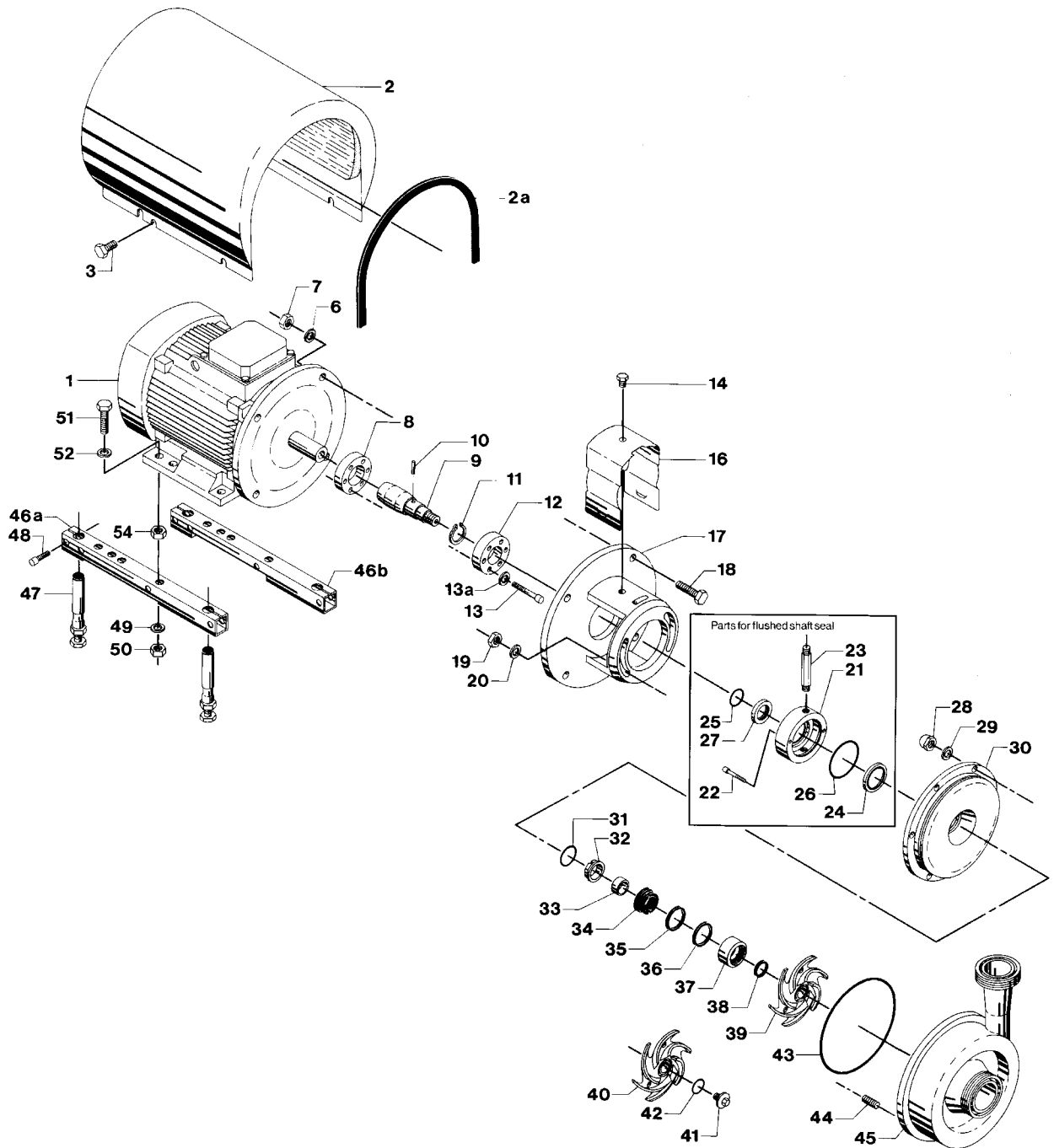
Conversion kit, single to flushed shaft seal 9611-92-2177 = Pos. 21, 22, 23, 24, 25, 26 and 27.

## Surface roughness, product wetted parts: Ra ≤ 0.8 μm

Pos.	Qty.	Denomination	1.5-2.2 kW	3 kW	4 kW
30	1	Back plate .....	9612-3892-16	9612-3892-16	9612-3892-16
39	1	Impeller .....	9612-4081-15	9612-4081-05	9612-4081-05
45	1	Pump casing, IDF .....	9612-4572-01	9612-4572-01	9612-4572-01
	1	Pump casing, SMS .....	9612-4572-02	9612-4572-02	9612-4572-02
	1	Pump casing, DIN .....	9612-4572-03	9612-4572-03	9612-4572-03
	1	Pump casing, ISO .....	9612-4572-04	9612-4572-04	9612-4572-04
	1	Pump casing, BS .....	9612-4572-05	9612-4572-05	9612-4572-05
<b>Alternatives</b>					
40	1	Impeller for impeller screw .....	9612-4081-16	9612-4081-06	9612-4081-06
41	1	Impeller screw .....	9612-1396-03	9612-1396-03	9612-1396-03

# Pump for 16 bar Inlet Pressure, Type LKHI-15 Single and Flushed Shaft Seal

6



## Pump for 16 bar Inlet Pressure, Type LKHI-15 Single and Flushed Shaft Seal

Pos.	Qty.	Denomination	1.5-2.2 kW	3 kW	4 kW
2	1	Shroud complete .....	9612-1390-01	9612-1390-02	9612-1390-03
2a	1	Edge list (Included in pos. 2) .....			
3	4	Screw .....	9611-99-3240	9611-99-3240	9611-99-3240
6	4	Washer for adaptor .....	9611-99-1887	9611-99-0676	9611-99-0676
7	4	Nut for adaptor .....	9611-99-0353	9611-99-0587	9611-99-0587
8	1	Compression ring with thread .....	9612-1336-01	9612-1336-02	9612-1336-02
9	1	Shaft with internal/external thread and pin (pos.10) .....		9612-1325-02	9612-1325-02
	1	Shaft with internal/external thread, pin (pos.10) and retaining ring (pos.11) .....	9612-1324-02		
10	1	Connex pin .....	9611-99-0622	9611-99-0622	9611-99-0622
11	1	Retaining ring .....	9611-99-2307		
12	1	Compression ring without thread .....	9612-1337-01	9612-1337-02	9612-1337-02
13	6	Screw .....	9611-99-3196	9611-99-3196	9611-99-3196
13a	6	Washer .....	9611-99-3199	9611-99-3199	9611-99-3199
14	1	Screw for safety guard .....	9611-99-3239	9611-99-3239	9611-99-3239
16	1	Safety guard .....	9612-1311-05	9612-1311-06	9612-1311-06
17	1	Adaptor .....	9612-3423-01	9612-3424-01	9612-3424-01
18	4	Screw for adaptor .....	9611-99-2161	9611-99-1834	9611-99-1834
19	2	Nut .....	9611-99-0353	9611-99-0353	9611-99-0353
20	2	Washer .....	9611-99-2559	9611-99-2559	9611-99-2559
28	6	Cap nut .....	9611-99-2592	9611-99-2592	9611-99-2592
29	6	Washer .....	9611-99-1888	9611-99-1888	9611-99-1888
30	1	Back plate .....	9612-3892-05	9612-3892-05	9612-3892-05
33	1	Spacing ring .....	9612-3625-02	9612-3625-02	9612-3625-02
37	1	Rotating seal housing .....	9612-3624-01	9612-3624-01	9612-3624-01
39	1	Impeller .....	9612-5102-07	9612-5102-01	9612-5102-01
43	□○◆★	Joint ring, EPDM, (standard) .....	9611-99-2137	9611-99-2137	9611-99-2137
	1	Joint ring, NBR .....	9611-99-2139	9611-99-2139	9611-99-2139
	1	Joint ring, FPM .....	9611-99-2138	9611-99-2138	9611-99-2138
44	6	Bolt .....	9611-99-2168	9611-99-2168	9611-99-2168
45	1	Pump casing, IDF .....	9612-4924-01	9612-4924-01	9612-4924-01
	1	Pump casing, SMS .....	9612-4924-02	9612-4924-02	9612-4924-02
	1	Pump casing, DIN .....	9612-4924-03	9612-4924-03	9612-4924-03
	1	Pump casing, ISO .....	9612-4924-04	9612-4924-04	9612-4924-04
	1	Pump casing, BS .....	9612-4924-05	9612-4924-05	9612-4924-05
	1	Pump casing, flange DN100/DN80 .....	9612-1380-08	9612-1380-08	9612-1380-08
<b>Legs</b>					
46a	1	Support bar, right .....	9612-1322-01	9612-1322-05	9612-1322-05
46b	1	Support bar, left .....	9612-1323-01	9612-1323-05	9612-1323-05
47	4	Leg .....	9612-3967-01	9612-3967-01	9612-3967-01
48	4	Screw .....	9611-99-1126	9611-99-1126	9611-99-1126
49	4	Spring washer .....	9611-99-1888	9611-99-1887	9611-99-1887
50	4	Nut .....	9611-99-0360	9611-99-0353	9611-99-0353
51	4	Screw .....	9611-99-3241	9611-99-1374	9611-99-1911
52	4	Washer .....		9611-99-0786	9611-99-0786
54	4	Nut .....		9611-99-0587	
<b>Alternatives</b>					
40	1	Impeller for impeller screw .....	9612-5102-08	9612-5102-02	9612-5102-02
41	1	Impeller screw .....	9612-1396-01	9612-1396-01	9612-1396-01
42	○★	O-ring, EPDM .....	9611-99-2145	9611-99-2145	9611-99-2145
	1	O-ring, NBR .....	9611-99-2147	9611-99-2147	9611-99-2147
	1	O-ring, FPM .....	9611-99-2146	9611-99-2146	9611-99-2146
<b>Parts for flushed shaft seal</b>					
21	1	Seal housing for flushed seal .....	9612-3626-01	9612-3626-01	9612-3626-01
22	2	Screw .....	9611-99-0203	9611-99-0203	9611-99-0203
23	2	Tube .....	9612-3589-01	9612-3589-01	9612-3589-01
27	1	Sleeve .....	9612-3629-02	9612-3629-02	9612-3629-02

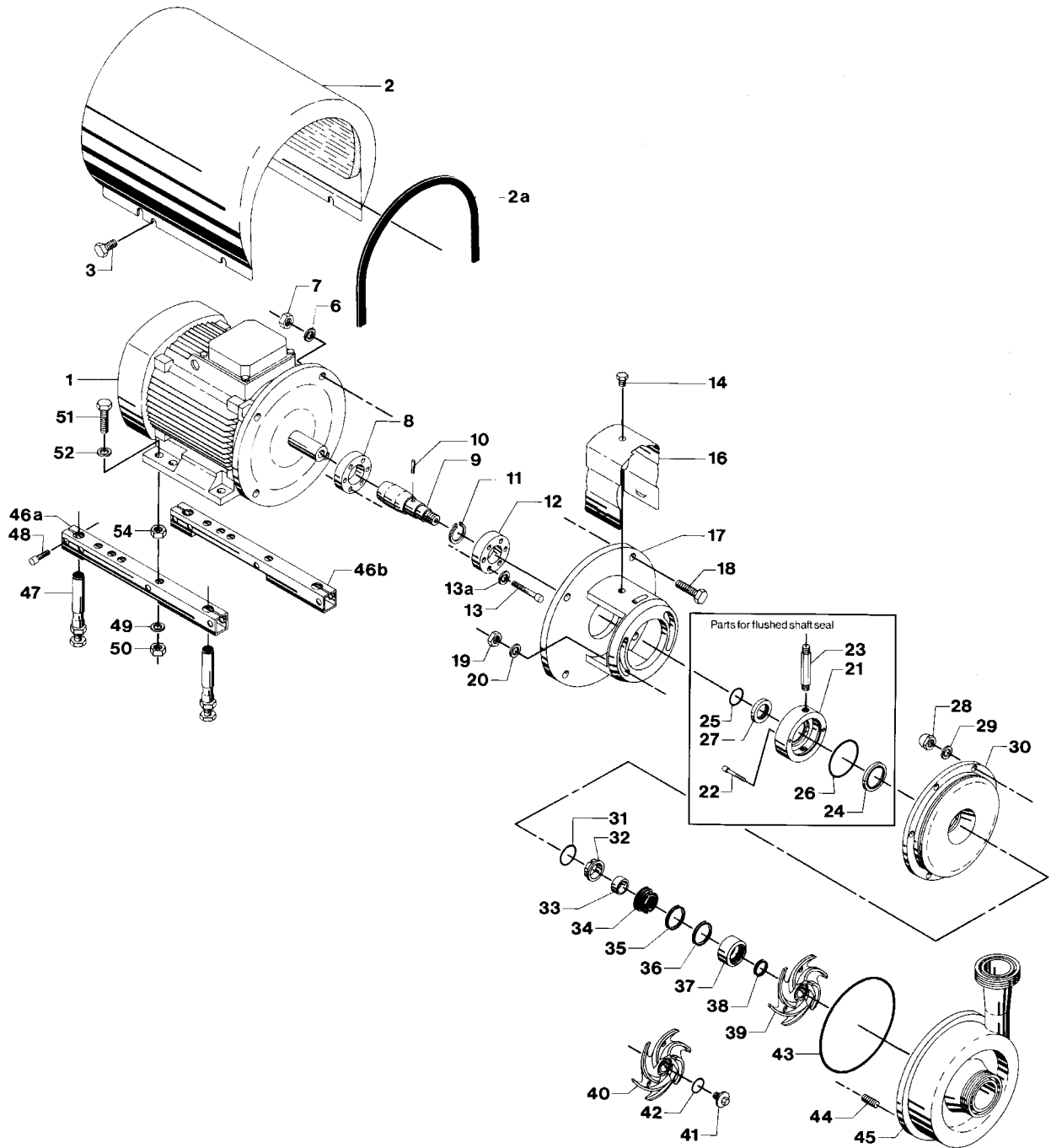
**Recommended Spare Parts: Service kits.**

900027/0

# Pump for 16 bar Inlet Pressure, Type LKHI-15 Single and Flushed Shaft Seal

(Same drawing as on page 6)

8





# Pump for 16 bar Inlet Pressure, Type LKHI-15 Single and Flushed Shaft Seal

Pos.	Qty.	Denomination	1.5 kW	2.2 kW	3 kW	4 kW
<b>0-10 bar</b>						
1	1	Motor, 220-240VD/380-420VY .....	31801-1982-1	31801-1983-1	31801-1984-1	9612-4028-07
	1	Motor, 380-420VD/660-690VY .....	31801-1982-2	31801-1983-2	31801-1984-2	9612-4028-09
<b>10-16 bar (Motors are with special ball bearing.)</b>						
1	1	Motor 220-240VD/380-420VY .....	9612-4189-01	9612-4189-03		9612-4189-07
	1	Motor 380-420VD/660-690VY .....	9612-4189-02	9612-4189-04		9612-4189-08

Pos.	Qty.	Denomination	1.5-4 kW
------	------	--------------	----------

**(0-10 bar)**

**Service kit for single shaft seal**

- Service kit, EPDM. .... 9611-92-2254
- Service kit, NBR. .... 9611-92-2255
- Service kit, FPM. .... 9611-92-2256

**Service kit for single shaft seal and impeller screw**

- Service kit, EPDM. .... 9611-92-2257
- Service kit, NBR. .... 9611-92-2258
- Service kit, FPM. .... 9611-92-2259

**Service kit for flushed shaft seal**

- ◆ Service kit, EPDM. .... 9611-92-2260
- ◆ Service kit, NBR. .... 9611-92-2261
- ◆ Service kit, FPM. .... 9611-92-2262

**Service kit for flushed shaft seal and impeller screw**

- \* Service kit, EPDM. .... 9611-92-2263
- \* Service kit, NBR. .... 9611-92-2264
- \* Service kit, FPM. .... 9611-92-2265

**(10-16 bar)**

**Service kit for single shaft seal**

- Service kit, EPDM. .... 9611-92-2139
- Service kit, NBR. .... 9611-92-2140
- Service kit, FPM. .... 9611-92-2141

**Service kit for single shaft seal and impeller screw**

- Service kit, EPDM. .... 9611-92-2142
- Service kit, NBR. .... 9611-92-2143
- Service kit, FPM. .... 9611-92-2144

**Service kit for flushed shaft seal**

- ◆ Service kit, EPDM. .... 9611-92-2145
- ◆ Service kit, NBR. .... 9611-92-2146
- ◆ Service kit, FPM. .... 9611-92-2147

**Service kit for flushed shaft seal and impeller screw**

- \* Service kit, EPDM. .... 9611-92-2148
- \* Service kit, NBR. .... 9611-92-2149
- \* Service kit, FPM. .... 9611-92-2150

Parts marked with Δ/O/◆/\* are included in the service kits.

Conversion kit, single to flushed shaft seal 9611-92-2177 = Pos. 21, 22, 23, 24, 25, 26 and 27.

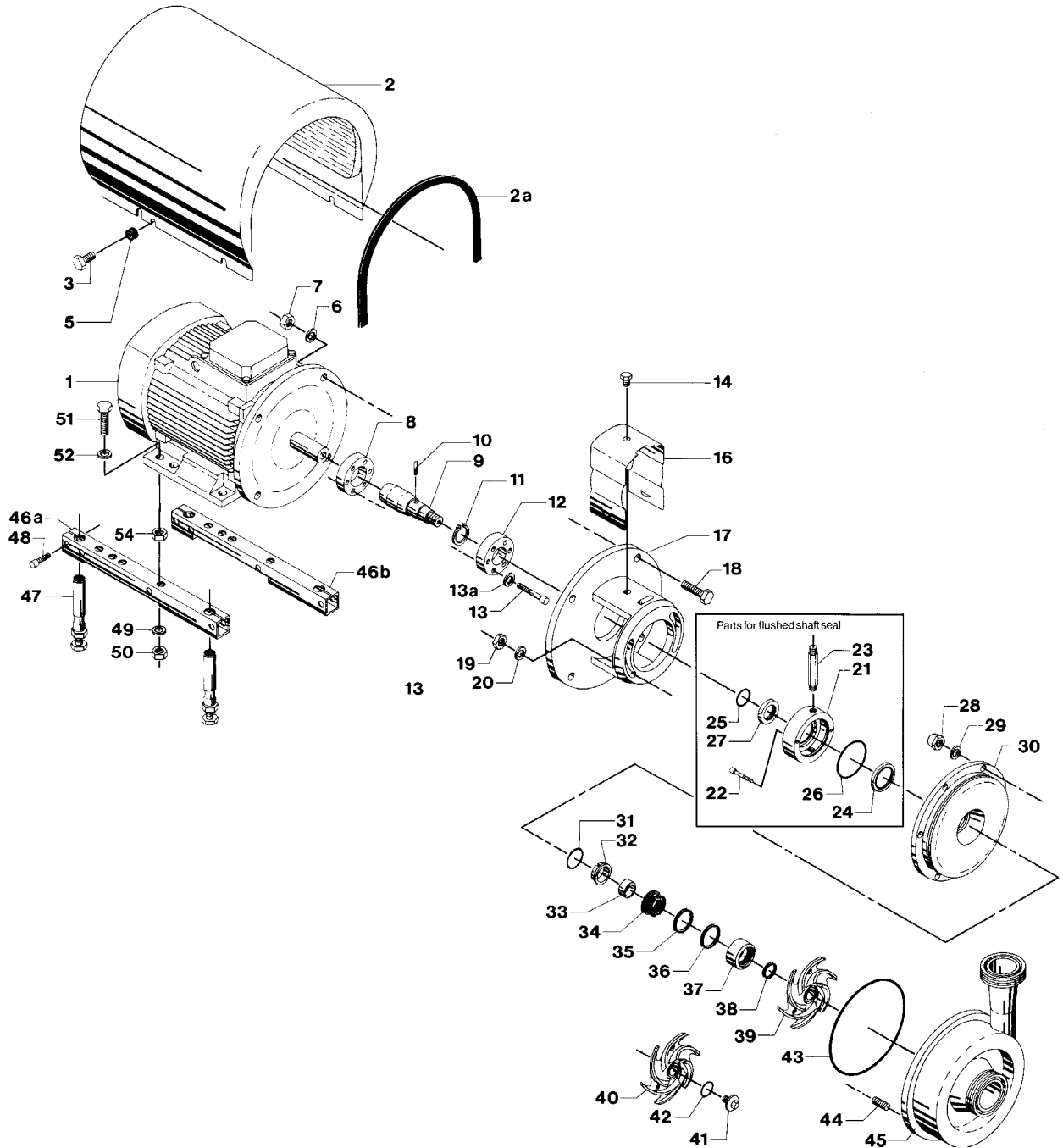
## Surface roughness, product wetted parts: Ra ≤ 0.8 μm

Pos.	Qty.	Denomination	1.5-2.2 kW	3 kW	4 kW
30	1	Back plate .....	9612-3892-16	9612-3892-16	9612-3892-16
39	1	Impeller .....	9612-5102-09	9612-5102-05	9612-5102-05
45	1	Pump casing, IDF .....	9612-4925-01	9612-4925-01	9612-4925-01
	1	Pump casing, SMS .....	9612-4925-02	9612-4925-02	9612-4925-02
	1	Pump casing, DIN .....	9612-4925-03	9612-4925-03	9612-4925-03
	1	Pump casing, ISO .....	9612-4925-04	9612-4925-04	9612-4925-04
	1	Pump casing, BS .....	9612-4925-05	9612-4925-05	9612-4925-05
<b>Alternatives</b>					
40	1	Impeller for impeller screw .....	9612-5102-10	9612-5102-06	9612-5102-06
41	1	Impeller screw .....	9612-1396-03	9612-1396-03	9612-1396-03

**Shaft seal: See page 38-39**

# Pump for 16 bar Inlet Pressure, Type LKHI-20 Single and Flushed Shaft Seal

10



# Pump for 16 bar Inlet Pressure, Type LKHI-20 Single and Flushed Shaft Seal

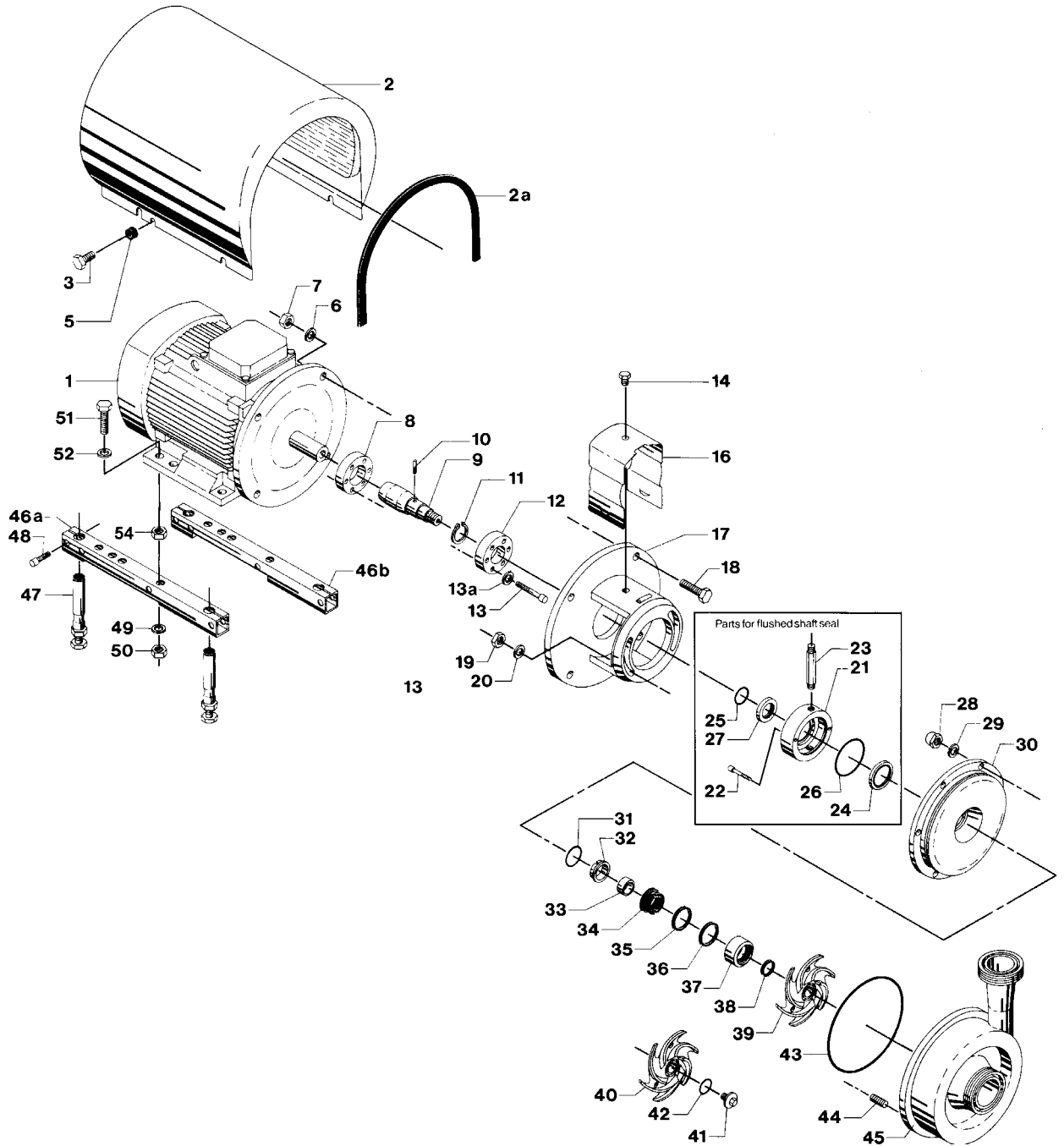
Pos.	Qty.	Denomination	1.5-2.2 kW	3kW	4 kW	5.5-7.5 kW
2	1	Shroud .....	9612-1390-01	9612-1390-02	9612-1390-03	9612-1390-08
2a	1	Edge list (Included in pos. 2) .....				
3	4	Screw .....	9611-99-3240	9611-99-3240	9611-99-3240	9611-99-3240
5	4	Distance sleeve .....				9611-99-2737
6	4	Washer for adaptor .....	9611-99-1887	9611-99-0676	9611-99-0676	9611-99-0676
7	4	Nut for adaptor .....	9611-99-0353	9611-99-0587	9611-99-0587	9611-99-0587
8	1	Compression ring with thread .....	9612-1336-01	9612-1336-02	9612-1336-02	9612-1336-05
9	1	Shaft with internal/external thread and pin (pos.10) .....		9612-1325-02	9612-1325-02	9612-1326-02
	1	Shaft with internal/external thread, pin (pos.10) and retaining ring (pos.11) .....	9612-1324-02			
10	1	Connex pin .....	9611-99-0622	9611-99-0622	9611-99-0622	9611-99-0622
11	1	Retaining ring .....	9611-99-2307			
12	1	Compression ring without thread .....	9612-1337-01	9612-1337-02	9612-1337-02	9612-1337-05
13	6	Screw .....	9611-99-3196	9611-99-3196	9611-99-3196	9611-99-3197
13a	6	Washer .....	9611-99-3199	9611-99-3199	9611-99-3199	9611-99-3199
14	1	Screw for safety guard .....	9611-99-3239	9611-99-3239	9611-99-3239	9611-99-3239
16	1	Safety guard .....	9612-1311-05	9612-1311-06	9612-1311-06	9612-1311-07
17	1	Adaptor .....	9612-3423-01	9612-3424-01	9612-3424-01	9612-3425-01
18	4	Screw for adaptor .....	9611-99-2161	9611-99-1834	9611-99-1834	9611-99-2162
19	2	Nut .....	9611-99-0353	9611-99-0353	9611-99-0353	9611-99-0353
20	2	Washer .....	9611-99-2559	9611-99-2559	9611-99-2559	9611-99-2559
28	6	Cap nut .....	9611-99-2592	9611-99-2592	9611-99-2592	9611-99-2592
29	6	Washer .....	9611-99-1888	9611-99-1888	9611-99-1888	9611-99-1888
30	1	Back plate .....	9612-3892-17	9612-3892-17	9612-3892-17	9612-3892-17
33	1	Spacing ring .....	9612-3625-02	9612-3625-02	9612-3625-02	9612-3625-02
37	1	Rotating seal housing .....	9612-3624-01	9612-3624-01	9612-3624-01	9612-3624-01
39	1	Impeller .....	9612-4082-07	9612-4082-01	9612-4082-01	9612-4082-01
43	□○◆★	Joint ring, EPDM (standard) .....	9611-99-2141	9611-99-2141	9611-99-2141	9611-99-2141
	1	Joint ring, NBR .....	9611-99-2143	9611-99-2143	9611-99-2143	9611-99-2143
	1	Joint ring, FPM .....	9611-99-2142	9611-99-2142	9611-99-2142	9611-99-2142
44	6	Bolt .....	9611-99-2168	9611-99-2168	9611-99-2168	9611-99-2168
45	1	Pump casing, IDF .....	9612-1398-06	9612-1398-06	9612-1398-06	9612-1398-06
	1	Pump casing, SMS .....	9612-1398-07	9612-1398-07	9612-1398-07	9612-1398-07
	1	Pump casing, DIN .....	9612-1398-08	9612-1398-08	9612-1398-08	9612-1398-08
	1	Pump casing, ISO .....	9612-1398-09	9612-1398-09	9612-1398-09	9612-1398-09
	1	Pump casing, BS .....	9612-1398-10	9612-1398-10	9612-1398-10	9612-1398-10
	1	Pump casing, flange DN65/DN50 .....	9612-1380-02	9612-1380-02	9612-1380-02	9612-1380-02
<b>Legs</b>						
46a	1	Support bar, right .....	9612-1322-01	9612-1322-05	9612-1322-05	9612-1322-06
46b	1	Support bar, left .....	9612-1323-01	9612-1323-05	9612-1323-05	9612-1323-06
47	4	Leg .....	9612-3967-01	9612-3967-01	9612-3967-01	9612-3967-01
48	4	Screw .....	9611-99-1126	9611-99-1126	9611-99-1126	9611-99-1126
49	4	Spring washer .....	9611-99-1888	9611-99-1887	9611-99-1887	9611-99-1887
50	4	Nut .....	9611-99-0360	9611-99-0353	9611-99-0353	9611-99-0353
51	4	Screw .....	9611-99-3241	9611-99-1374	9611-99-1911	9611-99-1911
52	4	Washer .....		9611-99-0786	9611-99-0786	9611-99-0786
54	4	Nut .....		9611-99-0587		
<b>Alternatives</b>						
40	1	Impeller for impeller screw .....	9612-4082-08	9612-4082-02	9612-4082-02	9612-4082-02
41	1	Impeller screw .....	9612-1396-01	9612-1396-01	9612-1396-01	9612-1396-01
42	○★	O-ring, EPDM .....	9611-99-2145	9611-99-2145	9611-99-2145	9611-99-2145
	1	O-ring, NBR .....	9611-99-2147	9611-99-2147	9611-99-2147	9611-99-2147
	1	O-ring, FPM .....	9611-99-2146	9611-99-2146	9611-99-2146	9611-99-2146
<b>Parts for flushed shaft seal</b>						
21	1	Seal housing for flushed seal .....	9612-3626-01	9612-3626-01	9612-3626-01	9612-3626-01
22	2	Screw .....	9611-99-0203	9611-99-0203	9611-99-0203	9611-99-0203
23	2	Tube .....	9612-3589-01	9612-3589-01	9612-3589-01	9612-3589-01
27	1	Sleeve .....	9612-3629-02	9612-3629-02	9612-3629-02	9612-3629-02

**Recommended Spare Parts: Service kits.**

# Pump for 16 bar Inlet Pressure, Type LKHI-20 Single and Flushed Shaft Seal

(Same drawing as on page 10)

12



# Pump for 16 bar Inlet Pressure, Type LKHI-20 Single and Flushed Shaft Seal

Pos.	Qty.	Denomination	1.5 kW	2.2 kW	3 kW	4 kW	5.5kW	7.5 kW
<b>0-10 bar</b>								
1	1	Motor, 220-240VD/380-420VY ....	31801-1982-1	31801-1983-1	31801-1984-1	9612-4028-07	9612-4028-15	9612-4028-30
	1	Motor, 380-420VD/660-690VY ....	31801-1982-2	31801-1983-2	31801-1984-2	9612-4028-09	9612-4028-17	9612-4028-32
<b>10-16 bar</b> (Motors are with special ball bearing.)								
1	1	Motor, 220-240VD/380-420VY ....	9612-4189-01	9612-4189-03		9612-4189-07	9612-4189-09	9612-4189-11
	1	Motor, 380-420VD/660-690VY ....	9612-4189-02	9612-4189-04		9612-4189-08	9612-4189-10	9612-4189-12

Pos.	Qty.	Denomination	1.5-7.5 kW
------	------	--------------	------------

**(0-10 bar)**

**Service kit for single shaft seal**

- Service kit, EPDM. .... 9611-92-2266
- Service kit, NBR. .... 9611-92-2267
- Service kit, FPM. .... 9611-92-2268

**Service kit for single shaft seal and impeller screw**

- Service kit, EPDM. .... 9611-92-2269
- Service kit, NBR. .... 9611-92-2270
- Service kit, FPM. .... 9611-92-2271

**Shaft seal: See page 38-39**

**Service kit for flushed shaft seal**

- ◆ Service kit, EPDM. .... 9611-92-2272
- ◆ Service kit, NBR. .... 9611-92-2273
- ◆ Service kit, FPM. .... 9611-92-2274

**Service kit for flushed shaft seal and impeller screw**

- \* Service kit, EPDM. .... 9611-92-2275
- \* Service kit, NBR. .... 9611-92-2276
- \* Service kit, FPM. .... 9611-92-2277

**(10-16 bar)**

**Service kit for single shaft seal**

- Service kit, EPDM. .... 9611-92-2151
- Service kit, NBR. .... 9611-92-2152
- Service kit, FPM. .... 9611-92-2153

**Service kit for single shaft seal and impeller screw**

- Service kit, EPDM. .... 9611-92-2154
- Service kit, NBR. .... 9611-92-2155
- Service kit, FPM. .... 9611-92-2156

**Service kit for flushed shaft seal**

- ◆ Service kit, EPDM. .... 9611-92-2157
- ◆ Service kit, NBR. .... 9611-92-2158
- ◆ Service kit, FPM. .... 9611-92-2159

**Service kit for flushed shaft seal and impeller screw**

- \* Service kit, EPDM. .... 9611-92-2160
- \* Service kit, NBR. .... 9611-92-2161
- \* Service kit, FPM. .... 9611-92-2162

Parts marked with Δ/◇/◆/\* are included in the **service kits**.

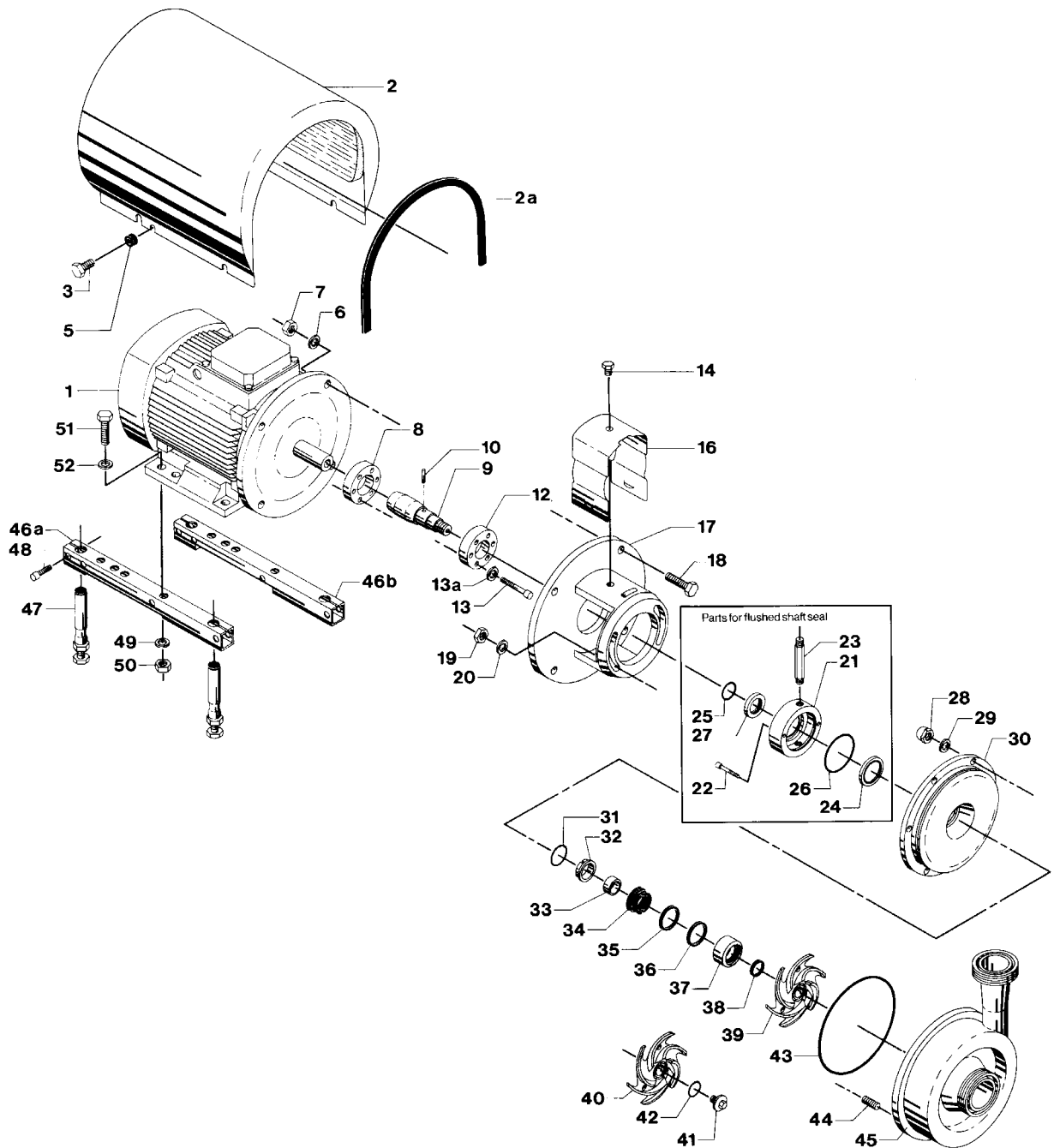
**Conversion kit, single to flushed shaft seal 9611-92-2177 = Pos. 21, 22, 23, 24, 25, 26 and 27.**

## Surface roughness, product wetted parts: Ra ≤ 0.8 μm

Pos.	Qty.	Denomination	1.5-2.2 kW	3 kW	4 kW	5.5-7.5 kW
30	1	Back plate .....	9612-3892-17	9612-3892-17	9612-3892-17	9612-3892-17
39	1	Impeller .....	9612-4082-09	9612-4082-05	9612-4082-05	9612-4082-05
45	1	Pump casing, IDF .....	9612-4572-06	9612-4572-06	9612-4572-06	9612-4572-06
	1	Pump casing, SMS .....	9612-4572-07	9612-4572-07	9612-4572-07	9612-4572-07
	1	Pump casing, DIN .....	9612-4572-08	9612-4572-08	9612-4572-08	9612-4572-08
	1	Pump casing, ISO .....	9612-4572-09	9612-4572-09	9612-4572-09	9612-4572-09
	1	Pump casing, BS .....	9612-4572-10	9612-4572-10	9612-4572-10	9612-4572-10
<b>Alternatives</b>						
40	1	Impeller for impeller screw .....	9612-4082-10	9611-4082-06	9611-4082-06	9612-4082-06
41	1	Impeller screw .....	9612-1396-03	9612-1396-03	9612-1396-03	9612-1396-03

# Pump for 16 bar Inlet Pressure, Type LKHI-25 Single and Flushed Shaft Seal

14



# Pump for 16 bar Inlet Pressure, Type LKHI-25 Single and Flushed Shaft Seal

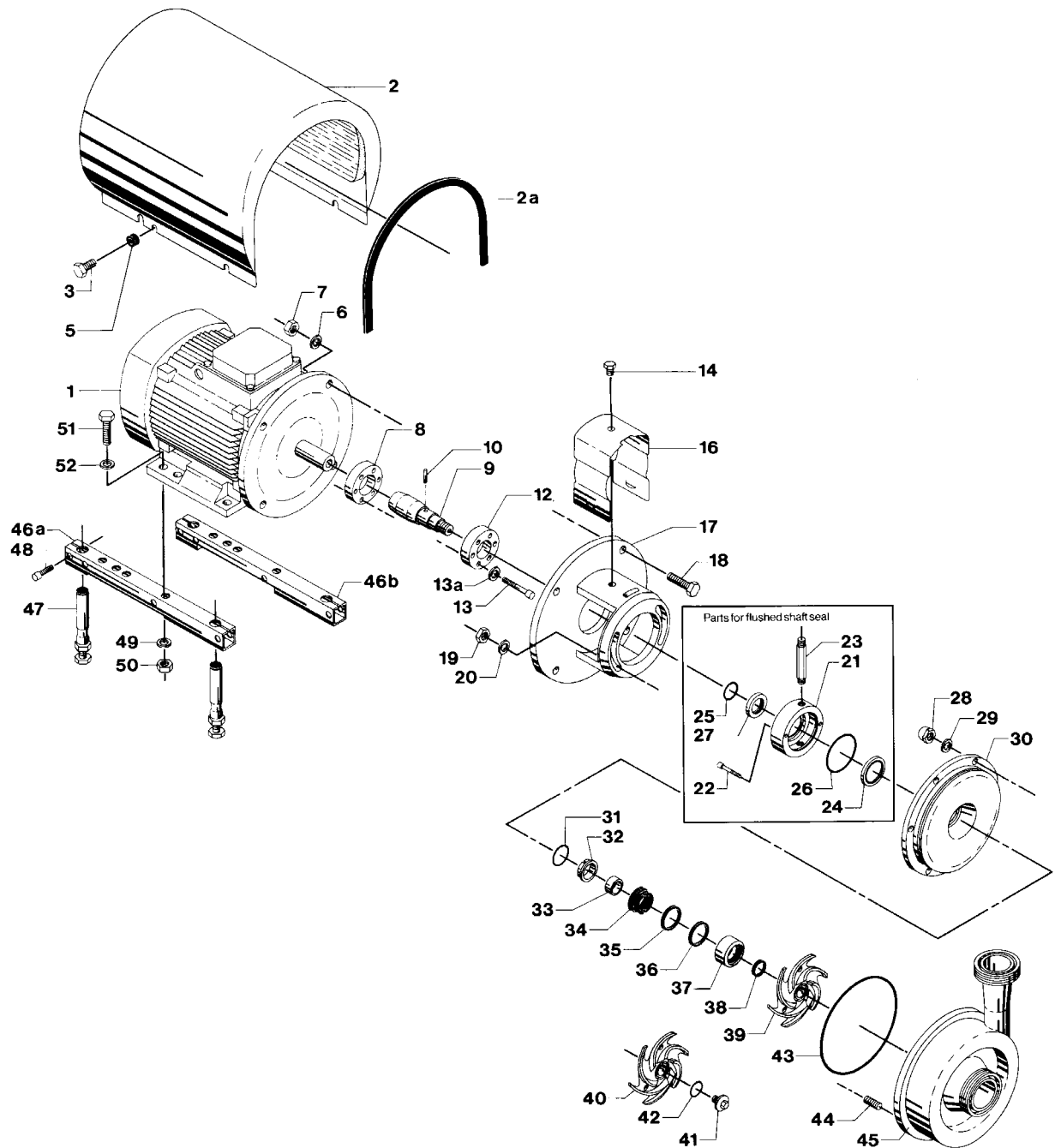
Pos.	Qty.	Denomination	4 kW	5.5-7.5 kW	11-15 kW
2	1	Shroud .....	9612-1390-03	9612-1390-08	9612-1390-05
2a	1	Edge list (Included in pos 2) .....			
3	4	Screw .....	9611-99-3240	9611-99-3240	9611-99-3241
5	4	Distance sleeve .....		9611-99-2737	31438-0390-2
6	4	Washer for adaptor .....	9611-99-0676	9611-99-0676	9611-99-1886
7	4	Nut for adaptor .....	9611-99-0587	9611-99-0587	9611-99-2160
8	1	Compression ring with thread .....	9612-1336-02	9612-1336-05	9612-1336-03
9	1	Shaft with internal/external thread and pin (pos.10) .....	9612-1325-02	9612-1326-02	9612-1327-02
10	1	Connex pin .....	9611-99-0622	9611-99-0622	9611-99-0622
12	1	Compression ring without thread .....	9612-1337-02	9612-1337-05	9612-1337-03
13	6	Screw .....	9611-99-3196	9611-99-3197	9611-99-3198
13a	6	Washer .....	9611-99-3199	9611-99-3199	9611-99-3199
14	1	Screw for safety guard .....	9611-99-3239	9611-99-3239	9611-99-3239
16	1	Safety guard .....	9612-1311-06	9612-1311-07	9612-1311-08
17	1	Adaptor .....	9612-3424-01	9612-3425-01	9612-3426-01
18	4	Screw for adaptor .....	9611-99-1834	9611-99-2162	9611-99-2163
19	2	Nut .....	9611-99-0353	9611-99-0353	9611-99-0353
20	2	Washer .....	9611-99-2559	9611-99-2559	9611-99-2559
28	6	Cap nut .....	9611-99-2593	9611-99-2593	9611-99-2593
29	6	Washer .....	9611-99-1887	9611-99-1887	9611-99-1887
30	1	Back plate .....	9612-3892-20	9612-3892-20	9612-3892-20
33	1	Spacing ring .....	9612-3625-02	9612-3625-02	9612-3625-02
37	1	Rotating seal housing .....	9612-3624-01	9612-3624-01	9612-3624-01
39	1	Impeller .....	9612-5103-07	9612-5103-07	9612-5103-01
43	□○◆★ 1	Joint ring, EPDM (standard) .....	9611-99-2983	9611-99-2983	9611-99-2983
	1	Joint ring, NBR .....	9611-99-2984	9611-99-2984	9611-99-2984
	1	Joint ring, FPM .....	9611-99-2985	9611-99-2985	9611-99-2985
44	6	Bolt .....	9611-99-2169	9611-99-2169	9611-99-2169
45	1	Pump casing, IDF .....	9612-4924-06	9612-4924-06	9612-4924-06
	1	Pump casing, SMS .....	9612-4924-07	9612-4924-07	9612-4924-07
	1	Pump casing, DIN .....	9612-4924-08	9612-4924-08	9612-4924-08
	1	Pump casing, ISO .....	9612-4924-09	9612-4924-09	9612-4924-09
	1	Pump casing, BS .....	9612-4924-10	9612-4924-10	9612-4924-10
	1	Pump casing, flange DN80/DN65 .....	9612-1380-09	9612-1380-09	9612-1380-09
<b>Legs</b>					
46a	1	Support bar, right .....	9612-1322-05	9612-1322-06	9612-1322-03
46b	1	Support bar, left .....	9612-1323-05	9612-1323-06	9612-1323-03
47	4	Leg .....	9612-3967-01	9612-3967-01	9612-3967-01
48	4	Screw .....	9611-99-1126	9611-99-1126	9611-99-1126
49	4	Spring washer .....	9611-99-1887	9611-99-1887	9611-99-0676
50	4	Nut .....	9611-99-0353	9611-99-0353	9611-99-0587
51	4	Screw .....	9611-99-1911	9611-99-1911	9611-99-1834
52	4	Washer .....	9611-99-0786	9611-99-0786	9611-99-0706
<b>Alternatives</b>					
40	1	Impeller for impeller screw .....	9612-5103-08	9612-5103-08	9612-5103-02
41	1	Impeller screw .....	9612-1396-01	9612-1396-01	9612-1396-01
42	○★ 1	O-ring, EPDM .....	9611-99-2145	9611-99-2145	9611-99-2145
	1	O-ring, NBR .....	9611-99-2147	9611-99-2147	9611-99-2147
	1	O-ring, FPM .....	9611-99-2146	9611-99-2146	9611-99-2146
<b>Parts for flushed shaft seal</b>					
21	1	Seal housing for flushed seal .....	9612-3626-02	9612-3626-02	9612-3626-02
22	2	Screw .....	9611-99-4038	9611-99-4038	9611-99-4038
23	2	Tube .....	9612-3589-01	9612-3589-01	9612-3589-01
27	1	Sleeve .....	9612-3629-02	9612-3629-02	9612-3629-02

**Recommended Spare Parts: Service kits.**

# Pump for 16 bar Inlet Pressure, Type LKHI-25 Single and Flushed Shaft Seal

(Same drawing as on page 14)

16





# Pump for 16 bar Inlet Pressure, Type LKHI-25 Single and Flushed Shaft Seal

Pos. Qty. Denomination	4 kW	5.5 kW	7.5 kW	11 kW	15 kW
<b>0-10 bar</b>					
1 1 Motor 220-240VD/380-420VY .....	9612-4028-07	9612-4028-15	9612-4028-30	31801-0122-1	31801-1194-1
1 1 Motor 380-420VD/660-690VY .....	9612-4028-09	9612-4028-17	9612-4028-32	31801-0122-3	31801-1194-3
<b>10-16 bar (Motors are with special ball bearing.)</b>					
1 1 Motor 220-240VD/380-420VY .....	9612-4189-07	9612-4189-09	9612-4189-11	9612-4189-13	9612-4189-15
1 1 Motor 380-420VD/660-690VY .....	9612-4189-08	9612-4189-10	9612-4189-12	9612-4189-14	9612-4189-16

**Pos. Qty. Denomination** **4-15 kW**

**(0-10 bar)**

**Service kit for single shaft seal**

- Service kit, EPDM. .... 9611-92-2278
- Service kit, NBR. .... 9611-92-2279
- Service kit, FPM. .... 9611-92-2280

**Shaft seal: See page 38-39**

**Service kit for single shaft seal and impeller screw**

- Service kit, EPDM. .... 9611-92-2281
- Service kit, NBR. .... 9611-92-2282
- Service kit, FPM. .... 9611-92-2283

**Service kit for flushed shaft seal**

- ◆ Service kit, EPDM. .... 9611-92-2284
- ◆ Service kit, NBR. .... 9611-92-2285
- ◆ Service kit, FPM. .... 9611-92-2286

**Service kit for flushed shaft seal and impeller screw**

- \* Service kit, EPDM. .... 9611-92-2287
- \* Service kit, NBR. .... 9611-92-2288
- \* Service kit, FPM. .... 9611-92-2289

**(10-16 bar)**

**Service kit for single shaft seal**

- Service kit, EPDM. .... 9611-92-2194
- Service kit, NBR. .... 9611-92-2195
- Service kit, FPM. .... 9611-92-2196

**Service kit for single shaft seal and impeller screw**

- Service kit, EPDM. .... 9611-92-2197
- Service kit, NBR. .... 9611-92-2198
- Service kit, FPM. .... 9611-92-2199

**Service kit for flushed shaft seal**

- ◆ Service kit, EPDM. .... 9611-92-2200
- ◆ Service kit, NBR. .... 9611-92-2201
- ◆ Service kit, FPM. .... 9611-92-2202

**Service kit for flushed shaft seal and impeller screw**

- \* Service kit, EPDM. .... 9611-92-2203
- \* Service kit, NBR. .... 9611-92-2204
- \* Service kit, FPM. .... 9611-92-2205

Parts marked with //◆/\* are included in the service kits.

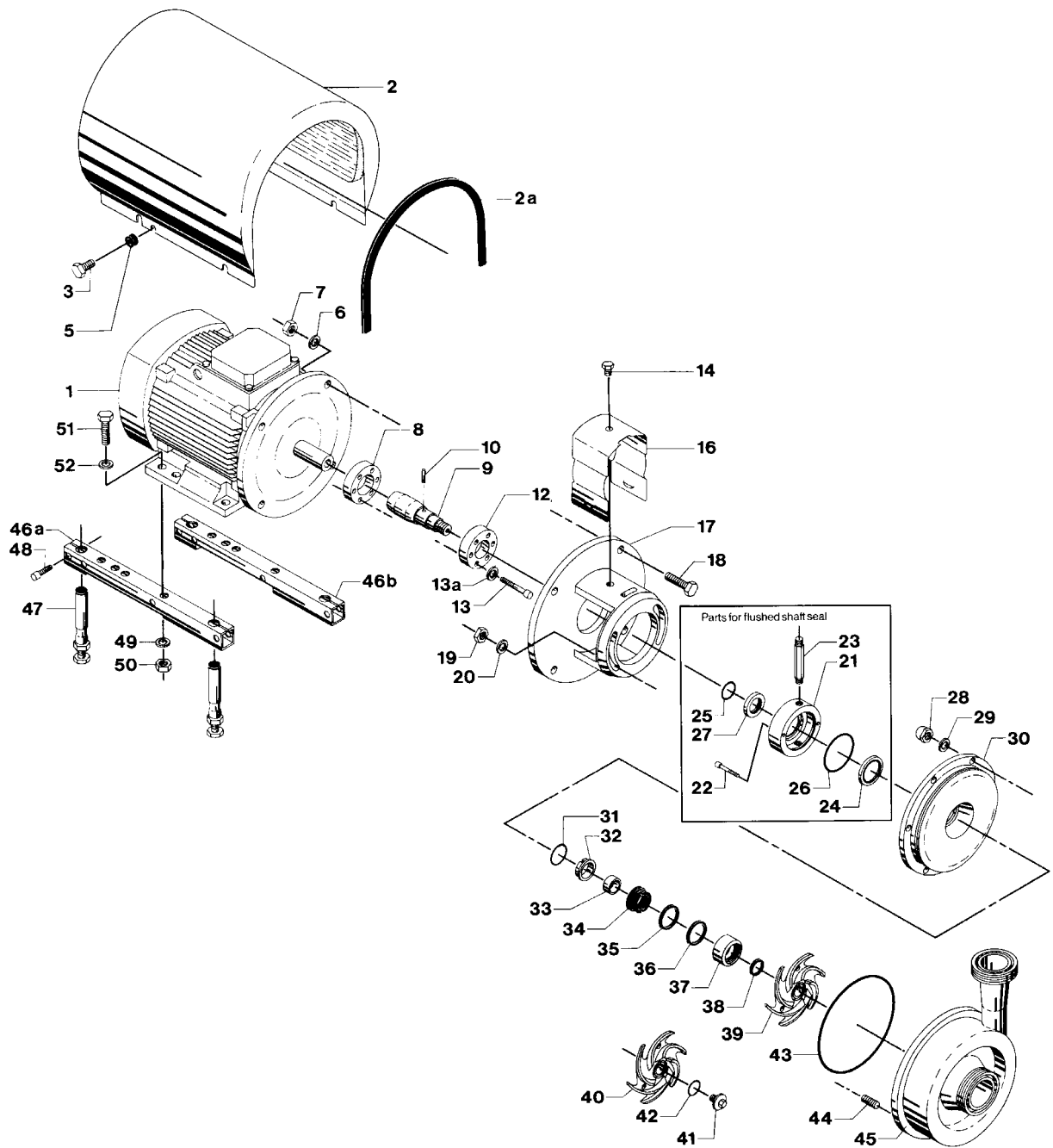
Conversion kit, single to flushed shaft seal 9611-92-2177 = Pos. 21, 22, 23, 24, 25, 26 and 27.

## Surface roughness, product wetted parts: Ra ≤ 0.8 μm

Pos. Qty. Denomination	4 kW	5.5-7.5 kW	11-15 kW
30 1 Back plate .....	9612-3892-22	9612-3892-22	9612-3892-22
39 1 Impeller .....	9612-5103-09	9612-5103-09	9612-5103-05
45 1 Pump casing, IDF .....	9612-4925-06	9612-4925-06	9612-4925-06
1 Pump casing, SMS .....	9612-4925-07	9612-4925-07	9612-4925-07
1 Pump casing, DIN .....	9612-4925-08	9612-4925-08	9612-4925-08
1 Pump casing, ISO .....	9612-4925-09	9612-4925-09	9612-4925-09
1 Pump casing, BS .....	9612-4925-10	9612-4925-10	9612-4925-10
<b>Alternatives</b>			
40 1 Impeller for impeller screw .....	9611-5103-10	9612-5103-10	9612-5103-06
41 1 Impeller screw .....	9612-1369-03	9612-1396-03	9612-1396-03

# Pump for 16 bar Inlet Pressure, Type LKHI-35 Single and Flushed Shaft Seal

18



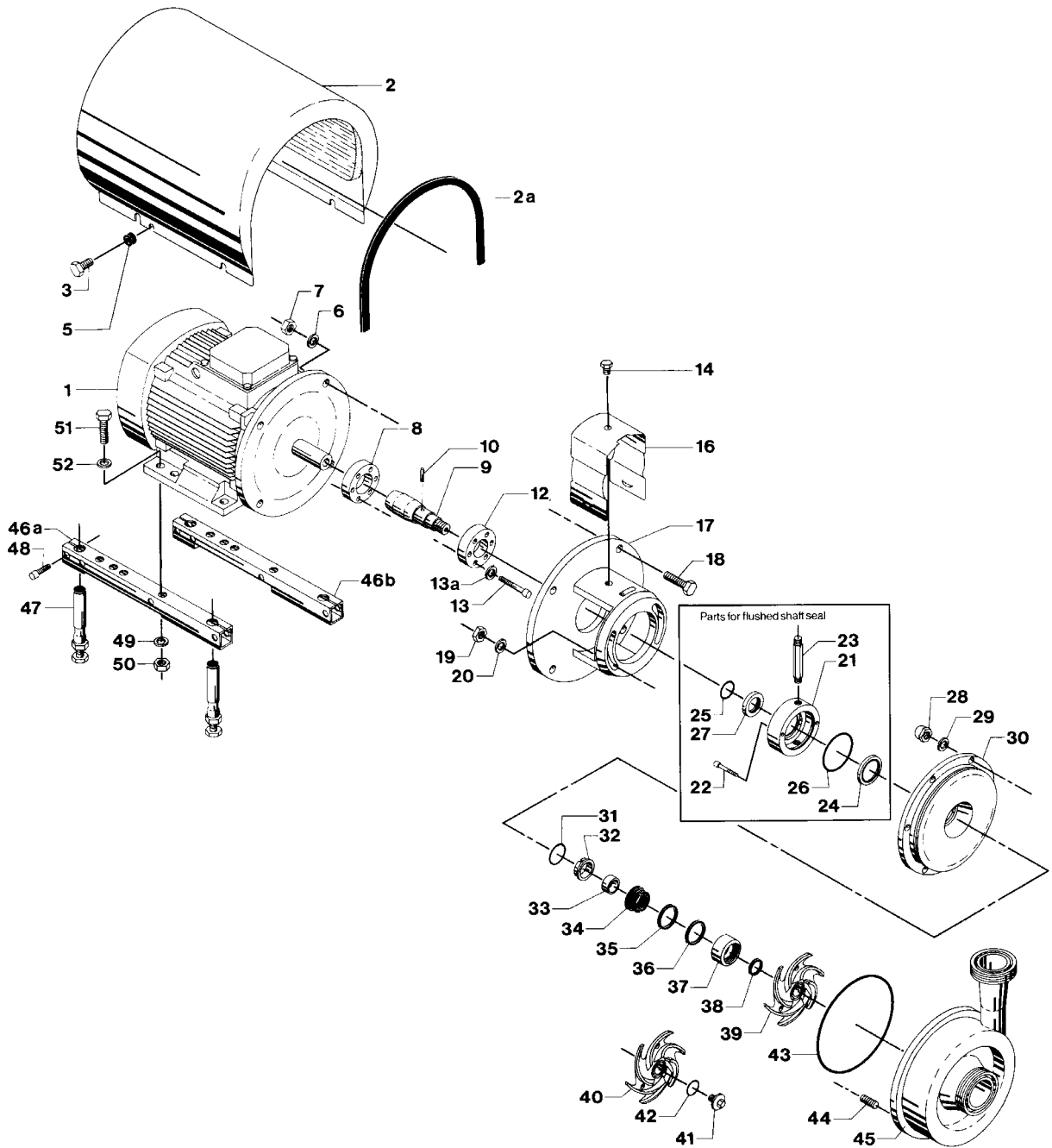
## Pump for 16 bar Inlet Pressure, Type LKHI-35 Single and Flushed Shaft Seal

Pos.	Qty.	Denomination	4 kW	5.5-7.5 kW	11-15 kW
2	1	Shroud .....	9612-1390-03	9612-1390-08	9612-1390-05
2a	1	Edge list (Included in pos 2)			
3	4	Screw .....	9611-99-3240	9611-99-3240	9611-99-3241
5	4	Distance sleeve .....		9611-99-2737	31438-0390-2
6	4	Washer for adaptor .....	9611-99-0676	9611-99-0676	9611-99-1886
7	4	Nut for adaptor .....	9611-99-0587	9611-99-0587	9611-99-2160
8	1	Compression ring with thread .....	9612-1336-02	9612-1336-05	9612-1336-03
9	1	Shaft with internal/external thread and pin (pos.10) .....	9612-1325-02	9612-1326-02	9612-1327-02
10	1	Connex pin .....	9611-99-0622	9611-99-0622	9611-99-0622
12	1	Compression ring without thread .....	9612-1337-02	9612-1337-05	9612-1337-03
13	6	Screw .....	9611-99-3196	9611-99-3197	9611-99-3198
13a	6	Washer .....	9611-99-3199	9611-99-3199	9611-99-3199
14	1	Screw for safety guard .....	9611-99-3239	9611-99-3239	9611-99-3239
16	1	Safety guard .....	9612-1311-06	9612-1311-07	9612-1311-08
17	1	Adaptor .....	9612-3424-01	9612-3425-01	9612-3426-01
18	4	Screw for adaptor .....	9611-99-1834	9611-99-2162	9611-99-2163
19	2	Nut .....	9611-99-0353	9611-99-0353	9611-99-0353
20	2	Washer .....	9611-99-2559	9611-99-2559	9611-99-2559
28	6	Cap nut .....	9611-99-2593	9611-99-2593	9611-99-2593
29	6	Washer .....	9611-99-1887	9611-99-1887	9611-99-1887
30	1	Back plate .....	9612-3892-20	9612-3892-20	9612-3892-20
33	1	Spacing ring .....	9612-3625-02	9612-3625-02	9612-3625-02
37	1	Rotating seal housing .....	9612-3624-01	9612-3624-01	9612-3624-01
39	1	Impeller .....	9612-5104-07	9612-5104-07	9612-5104-01
43	□ ○ ◆ *	Joint ring, EPDM (standard) .....	9611-99-2983	9611-99-2983	9611-99-2983
	1	Joint ring, NBR .....	9611-99-2984	9611-99-2984	9611-99-2984
	1	Joint ring, FPM .....	9611-99-2985	9611-99-2985	9611-99-2985
44	6	Bolt .....	9611-99-2169	9611-99-2169	9611-99-2169
45	1	Pump casing, IDF .....	9612-4924-11	9612-4924-11	9612-4924-11
	1	Pump casing, SMS .....	9612-4924-12	9612-4924-12	9612-4924-12
	1	Pump casing, DIN .....	9612-4924-13	9612-4924-13	9612-4924-13
	1	Pump casing, ISO .....	9612-4924-14	9612-4924-14	9612-4924-14
	1	Pump casing, BS .....	9612-4924-15	9612-4924-15	9612-4924-15
	1	Pump casing, flange DN65/DN50 .....	9612-1380-10	9612-1380-10	9612-1380-10
<b>Legs</b>					
46a	1	Support bar, right .....	9612-1322-05	9612-1322-06	9612-1322-03
46b	1	Support bar, left .....	9612-1323-05	9612-1323-06	9612-1323-03
47	4	Leg .....	9612-3967-01	9612-3967-01	9612-3967-01
48	4	Screw .....	9611-99-1126	9611-99-1126	9611-99-1126
49	4	Spring washer .....	9611-99-1887	9611-99-1887	9611-99-0676
50	4	Nut .....	9611-99-0353	9611-99-0353	9611-99-0587
51	4	Screw .....	9611-99-1911	9611-99-1911	9611-99-1834
52	4	Washer .....	9611-99-0786	9611-99-0786	9611-99-0706
<b>Alternatives</b>					
40	1	Impeller for impeller screw .....	9612-5104-08	9612-5104-08	9612-5104-02
41	1	Impeller screw .....	9612-1396-01	9612-1396-01	9612-1396-01
42	○ *	O-ring, EPDM .....	9611-99-2145	9611-99-2145	9611-99-2145
	1	O-ring, NBR .....	9611-99-2147	9611-99-2147	9611-99-2147
	1	O-ring, FPM .....	9611-99-2146	9611-99-2146	9611-99-2146
<b>Parts for flushed shaft seal</b>					
21	1	Seal housing for flushed seal .....	9612-3626-02	9612-3626-02	9612-3626-02
22	2	Screw .....	9611-99-4038	9611-99-4038	9611-99-4038
23	2	Tube .....	9612-3589-01	9612-3589-01	9612-3589-01
27	1	Sleeve .....	9612-3629-02	9612-3629-02	9612-3629-02

# Pump for 16 bar Inlet Pressure, Type LKHI-35 Single and Flushed Shaft Seal

(Same drawing as on page 18)

20



# Pump for 16 bar Inlet Pressure, Type LKHI-35 Single and Flushed Shaft Seal

Pos. Qty. Denomination	4 kW	5.5 kW	7.5 kW	11 kW	15 kW
<b>0-10 bar</b>					
1 1 Motor 220-240VD/380-420VY .....	9612-4028-07	9612-4028-15	9612-4028-30	31801-0122-1	31801-1194-1
1 1 Motor 380-420VD/660-690VY .....	9612-4028-09	9612-4028-17	9612-4028-32	31801-0122-3	31801-1194-3
<b>10-16 bar</b> (Motors are with special ball bearing.)					
1 1 Motor 220-240VD/380-420VY .....	9612-4189-07	9612-4189-09	9612-4189-11	9612-4189-13	9612-4189-15
1 1 Motor 380-420VD/660-690VY .....	9612-4189-08	9612-4189-10	9612-4189-12	9612-4189-14	9612-4189-16

**Pos. Qty. Denomination** **4-15 kW**

**(0-10 bar)**

**Service kit for single shaft seal**

- Service kit, EPDM. .... 9611-92-2278
- Service kit, NBR. .... 9611-92-2279
- Service kit, FPM. .... 9611-92-2280

**Service kit for single shaft seal and impeller screw**

- Service kit, EPDM. .... 9611-92-2281
- Service kit, NBR. .... 9611-92-2282
- Service kit, FPM. .... 9611-92-2283

**Service kit for flushed shaft seal**

- ◆ Service kit, EPDM. .... 9611-92-2284
- ◆ Service kit, NBR. .... 9611-92-2285
- ◆ Service kit, FPM. .... 9611-92-2286

**Shaft seal: See page 38-39**

**Service kit for flushed shaft seal and impeller screw**

- \* Service kit, EPDM. .... 9611-92-2287
- \* Service kit, NBR. .... 9611-92-2288
- \* Service kit, FPM. .... 9611-92-2289

**(10-16 bar)**

**Service kit for single shaft seal**

- Service kit, EPDM. .... 9611-92-2194
- Service kit, NBR. .... 9611-92-2195
- Service kit, FPM. .... 9611-92-2196

**Service kit for single shaft seal and impeller screw**

- Service kit, EPDM. .... 9611-92-2197
- Service kit, NBR. .... 9611-92-2198
- Service kit, FPM. .... 9611-92-2199

**Service kit for flushed shaft seal**

- ◆ Service kit, EPDM. .... 9611-92-2200
- ◆ Service kit, NBR. .... 9611-92-2201
- ◆ Service kit, FPM. .... 9611-92-2202

**Service kit for flushed shaft seal and impeller screw**

- \* Service kit, EPDM. .... 9611-92-2203
- \* Service kit, NBR. .... 9611-92-2204
- \* Service kit, FPM. .... 9611-92-2205

Parts marked with  $\Delta/\diamond/\star$  are included in the service kits.

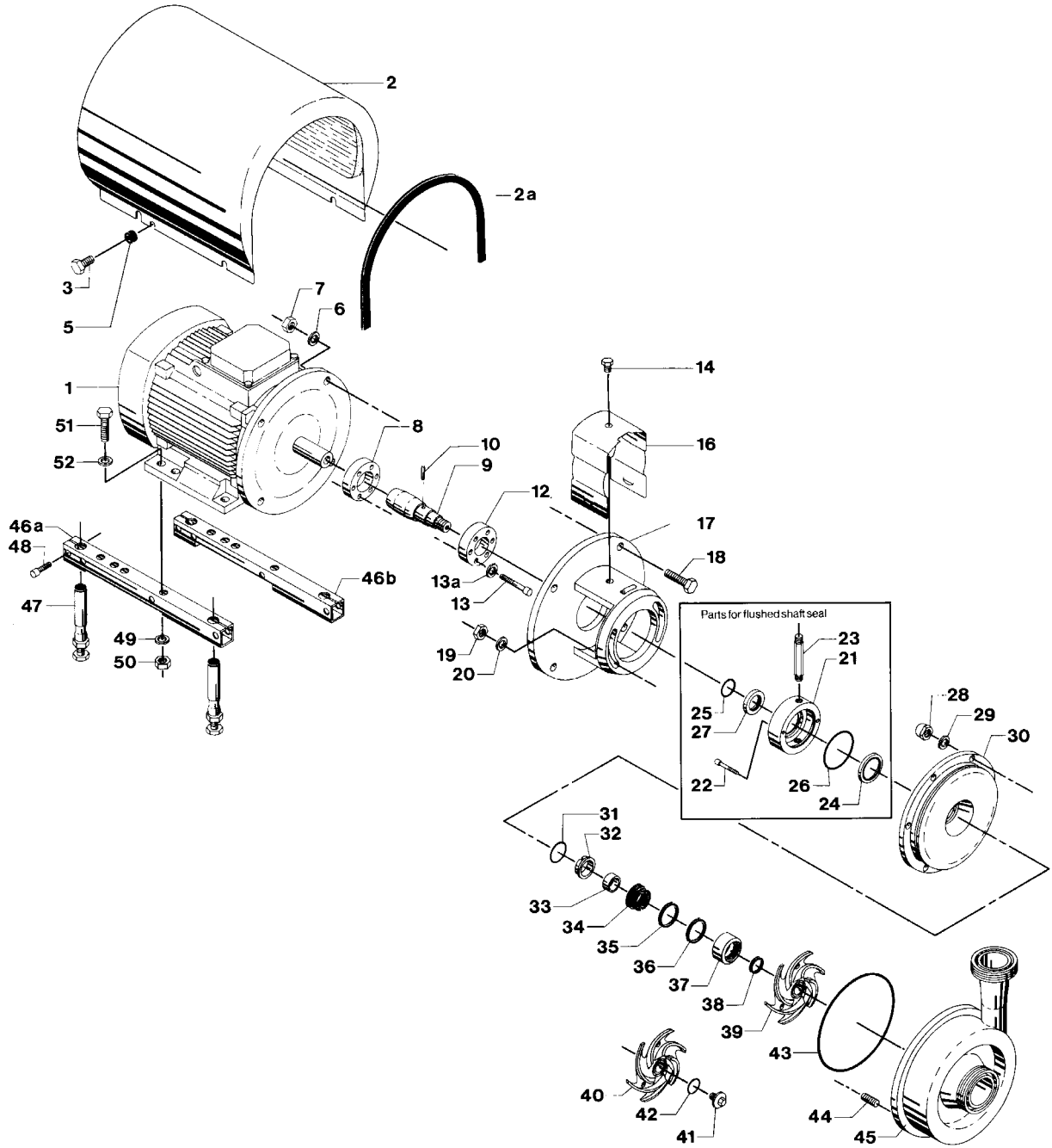
Conversion kit, single to flushed shaft seal 9611-92-2177 = Pos. 21, 22, 23, 24, 25, 26 and 27.

## Surface roughness, product wetted parts: $Ra \leq 0.8 \mu m$

Pos. Qty. Denomination	4 kW	5.5-7.5 kW	11-15 kW
30 1 Back plate .....	9612-3892-22	9612-3892-22	9612-3892-22
39 1 Impeller .....	9612-5104-09	9612-5104-09	9612-5104-05
45 1 Pump casing, IDF .....	9612-4925-11	9612-4925-11	9612-4925-11
1 Pump casing, SMS .....	9612-4925-12	9612-4925-12	9612-4925-12
1 Pump casing, DIN .....	9612-4925-13	9612-4925-13	9612-4925-13
1 Pump casing, ISO .....	9612-4925-14	9612-4925-14	9612-4925-14
1 Pump casing, BS .....	9612-4925-15	9612-4925-15	9612-4925-15
<b>Alternatives</b>			
40 1 Impeller for impeller screw .....	9611-5104-10	9612-5104-10	9612-5104-06
41 1 Impeller screw .....	9612-1369-03	9612-1369-03	9612-1369-03

# Pump for 16 bar Inlet Pressure, Type LKHI-40 Single and Flushed Shaft Seal

22



## Pump for 16 bar Inlet Pressure, Type LKHI-40 Single and Flushed Shaft Seal

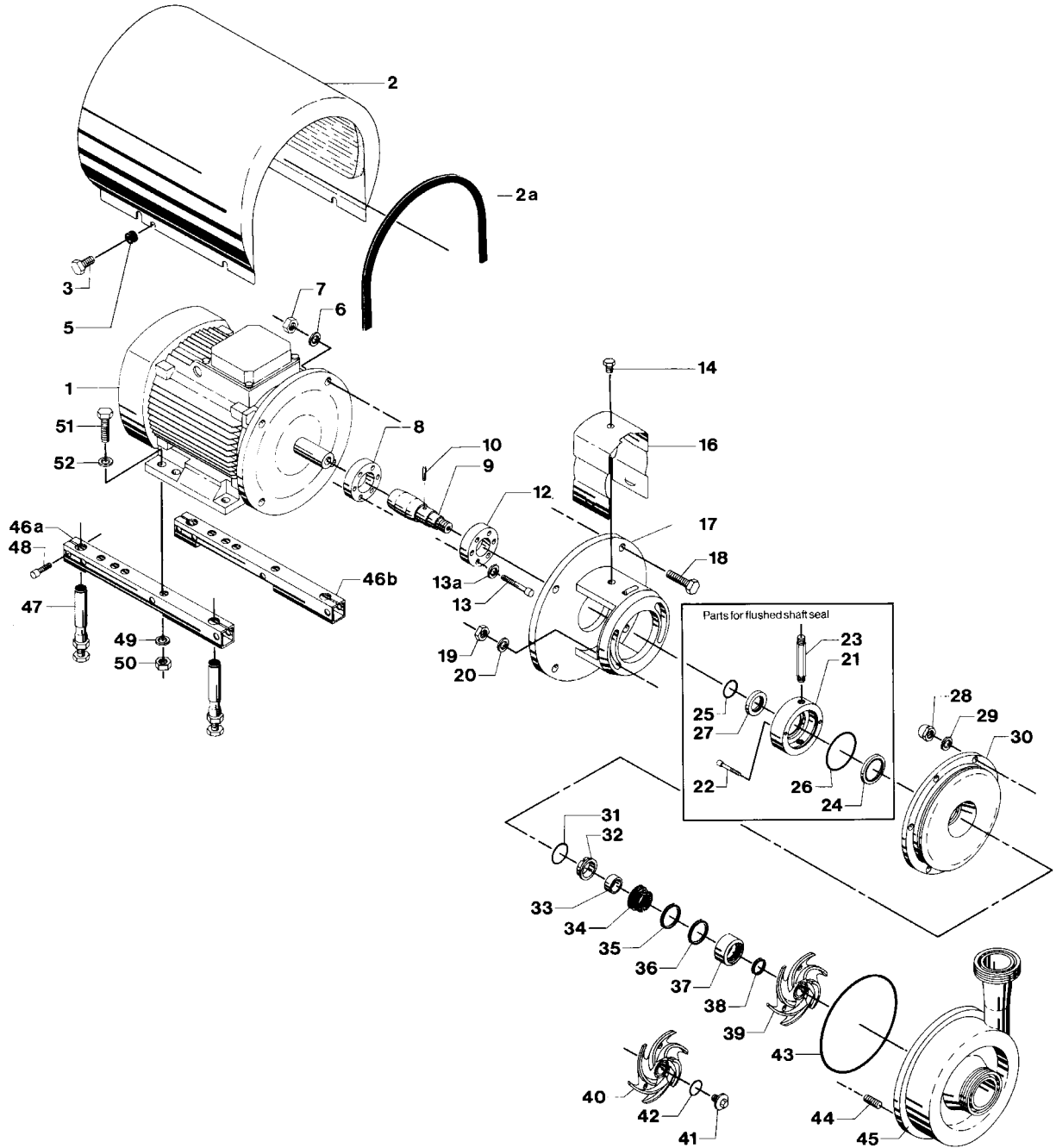
Pos.	Qty.	Denomination	7.5 kW	11 kW	15-18.5 kW	22 kW
2	1	Shroud .....	9612-1390-08	9612-1390-05	9612-1390-05	9612-1390-06
2a	1	Edge list (Included in pos 2)				
3	4	Screw .....	9611-99-3240	9611-99-3241	9611-99-3241	9611-99-3242
5	4	Distance sleeve .....	9611-99-2737	31438-0390-2	31438-0390-2	31438-0390-1
6	4	Washer for adaptor .....	9611-99-0676	9611-99-1886	9611-99-1886	9611-99-1886
7	4	Nut for adaptor .....	9611-99-0587	9611-99-2160	9611-99-2160	9611-99-2160
8	1	Compression ring with thread .....	9612-1336-05	9612-1336-03	9612-1336-03	9612-1336-04
9	1	Shaft with internal/external thread and pin (pos. 10) .....	9612-1326-02	9612-1327-02	9612-1327-02	9612-1328-02
10	1	Connex pin .....	9611-99-0622	9611-99-0622	9611-99-0622	9611-99-0622
12	1	Compression ring without thread ...	9612-1337-05	9612-1337-03	9612-1337-03	9612-1337-04
13	6	Screw and pin (pos.8) .....	9611-99-3197	9611-99-3198	9611-99-3198	9611-99-3198
13a	6	Washer .....	9611-99-3199	9611-99-3199	9611-99-3199	9611-99-3199
14	1	Screw for safety guard .....	9611-99-3239	9611-99-3239	9611-99-3239	9611-99-3239
16	1	Safety guard .....	9612-1311-07	9612-1311-08	9612-1311-08	9612-1311-08
17	1	Adaptor .....	9612-3425-01	9612-3426-01	9612-3426-01	9612-3426-01
18	4	Screw for adaptor .....	9611-99-2162	9611-99-2163	9611-99-2163	9611-99-2164
19	2	Nut .....	9611-99-0353	9611-99-0353	9611-99-0353	9611-99-0353
20	2	Washer .....	9611-99-2559	9611-99-2559	9611-99-2559	9611-99-2559
28	6	Cap nut .....	9611-99-2593	9611-99-2593	9611-99-2593	9611-99-2593
29	6	Washer .....	9611-99-1887	9611-99-1887	9611-99-1887	9611-99-1887
30	1	Back plate .....	9612-3892-07	9612-3892-07	9612-3892-07	9612-3892-07
33	1	Spacing ring .....	9612-3625-02	9612-3625-02	9612-3625-02	9612-3625-02
37	1	Rotating seal housing .....	9612-3624-01	9612-3624-01	9612-3624-01	9612-3624-01
39	1	Impeller .....	9612-4084-07	9612-4084-07	9612-4084-01	9612-4084-01
43	□ ○ ◆ ★ 1	Joint ring, EPDM (standard) .....	9611-99-2171	9611-99-2171	9611-99-2171	9611-99-2171
	1	Joint ring, NBR .....	9611-99-2173	9611-99-2173	9611-99-2173	9611-99-2173
	1	Joint ring, FPM .....	9611-99-2172	9611-99-2172	9611-99-2172	9611-99-2172
44	6	Bolt .....	9611-99-2169	9611-99-2169	9611-99-2169	9611-99-2169
45	1	Pump casing, IDF .....	9612-1398-16	9612-1398-16	9612-1398-16	9612-1398-16
	1	Pump casing, SMS .....	9612-1398-17	9612-1398-17	9612-1398-17	9612-1398-17
	1	Pump casing, DIN .....	9612-1398-18	9612-1398-18	9612-1398-18	9612-1398-18
	1	Pump casing, ISO .....	9612-1398-19	9612-1398-19	9612-1398-19	9612-1398-19
	1	Pump casing, BS .....	9612-1398-20	9612-1398-20	9612-1398-20	9612-1398-20
	1	Pump casing, flange DN80/DN65 ...	9612-1380-04	9612-1380-04	9612-1380-04	9612-1380-04
<b>Legs</b>						
46a	1	Support bar, right .....	9612-1322-06	9612-1322-03	9612-1322-03	9612-1322-04
46b	1	Support bar, left .....	9612-1323-06	9612-1323-03	9612-1323-03	9612-1323-04
47	4	Leg .....	9612-3967-01	9612-3967-01	9612-3967-01	9612-3967-01
48	4	Screw .....	9611-99-1126	9611-99-1126	9611-99-1126	9611-99-1126
49	4	Spring washer .....	9611-99-1887	9611-99-0676	9611-99-0676	9611-99-0676
50	4	Nut .....	9611-99-0353	9611-99-0587	9611-99-0587	9611-99-0587
51	4	Screw .....	9611-99-1911	9611-99-1834	9611-99-1834	9611-99-1834
52	4	Washer .....	9611-99-0786	9611-99-0706	9611-99-0706	9611-99-0706
<b>Alternatives</b>						
40	1	Impeller for impeller screw .....	9612-4084-08	9612-4084-08	9612-4084-02	9612-4084-02
41	1	Impeller screw .....	9612-1396-01	9612-1396-01	9612-1396-01	9612-1396-01
42	○ ★ 1	O-ring, EPDM .....	9611-99-2145	9611-99-2145	9611-99-2145	9611-99-2145
	1	O-ring, NBR .....	9611-99-2147	9611-99-2147	9611-99-2147	9611-99-2147
	1	O-ring, FPM .....	9611-99-2146	9611-99-2146	9611-99-2146	9611-99-2146
<b>Parts for flushed shaft seal</b>						
21	1	Seal housing for flushed seal .....	9612-3626-02	9612-3626-02	9612-3626-02	9612-3626-02
22	2	Screw .....	9611-99-4038	9611-99-4038	9611-99-4038	9611-99-4038
23	2	Tube .....	9612-3589-01	9612-3589-01	9612-3589-01	9612-3589-01
27	1	Sleeve .....	9612-3629-02	9612-3629-02	9612-3629-02	9612-3629-02

**Recommended Spare Parts: Service kits.**

# Pump for 16 bar Inlet Pressure, Type LKHI-40 Single and Flushed Shaft Seal

(Same drawing as on page 22)

24





# Pump for 16 bar Inlet Pressure, Type LKHI-40 Single and Flushed Shaft Seal

Pos.	Qty.	Denomination	7.5 kW	11 kW	15 kW	18.5 kW	22 kW
<b>0-10 bar</b>							
1	1	Motor 220-240VD/380-420VY .....	9612-4028-30	31801-0122-1	31801-1194-1	9612-3454-13	9612-3454-15
	1	Motor 380-420VD/660-690VY .....	9612-4028-32	31801-0122-3	31801-1194-3	9612-3454-14	9612-3454-16
<b>10-16 bar</b> (Motors are with special ball bearing.)							
1	1	Motor 220-240VΔ/380-420VY .....	9612-4189-11	9612-4189-13	9612-4189-15	9612-4189-17	9612-4189-19
	1	Motor 380-420VD/660-690VY .....	9612-4189-12	9612-4189-14	9612-4189-16	9612-4189-18	9612-4189-20

Pos.	Qty.	Denomination	7.5-22 kW
------	------	--------------	-----------

**(0-10 bar)**

**Service kit for single shaft seal**

- Service kit, EPDM. .... 9611-92-2290
- Service kit, NBR. .... 9611-92-2291
- Service kit, FPM. .... 9611-92-2292

**Service kit for single shaft seal and impeller screw**

- Service kit, EPDM. .... 9611-92-2293
- Service kit, NBR. .... 9611-92-2294
- Service kit, FPM. .... 9611-92-2295

**Shaft seal: See page 38-39**

**Service kit for flushed shaft seal**

- ◆ Service kit, EPDM. .... 9611-92-2296
- ◆ Service kit, NBR. .... 9611-92-2297
- ◆ Service kit, FPM. .... 9611-92-2298

**Service kit for flushed shaft seal and impeller screw**

- \* Service kit, EPDM. .... 9611-92-2299
- \* Service kit, NBR. .... 9611-92-2300
- \* Service kit, FPM. .... 9611-92-2301

**(10-16 bar)**

**Service kit for single shaft seal**

- Service kit, EPDM. .... 9611-92-2163
- Service kit, NBR. .... 9611-92-2164
- Service kit, FPM. .... 9611-92-2165

**Service kit for single shaft seal and impeller screw**

- Service kit, EPDM. .... 9611-92-2166
- Service kit, NBR. .... 9611-92-2167
- Service kit, FPM. .... 9611-92-2168

**Service kit for flushed shaft seal**

- ◆ Service kit, EPDM. .... 9611-92-2169
- ◆ Service kit, NBR. .... 9611-92-2170
- ◆ Service kit, FPM. .... 9611-92-2171

**Service kit for flushed shaft seal and impeller screw**

- \* Service kit, EPDM. .... 9611-92-2172
- \* Service kit, NBR. .... 9611-92-2173
- \* Service kit, FPM. .... 9611-92-2174

Parts marked with □/○/◆/\* are included in the service kits.

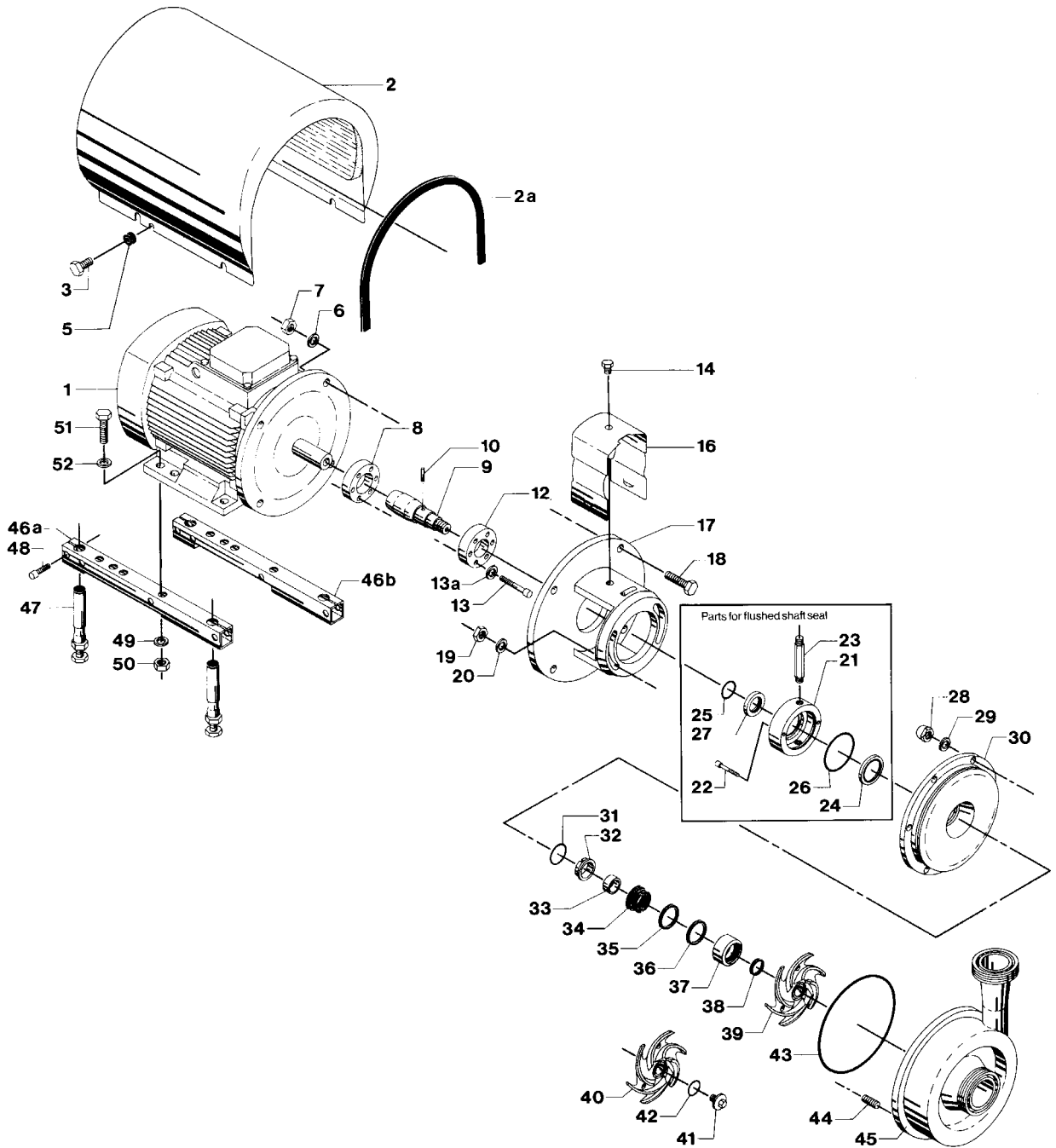
Conversion kit, single to flushed shaft seal 9611-92-2177 = Pos. 21, 22, 23, 24, 25, 26 and 27.

## Surface roughness, product wetted parts: Ra ≤ 0.8 μm

Pos.	Qty.	Denomination	7.5 kW	11-18.5 kW	22 kW
30	1	Back plate .....	9612-3892-18	9612-3892-18	9612-3892-18
39	1	Impeller .....	9612-4084-09	9612-4084-09	9612-4084-05
45	1	Pump casing, IDF .....	9612-4572-16	9612-4572-16	9612-4572-16
	1	Pump casing, SMS .....	9612-4572-17	9612-4572-17	9612-4572-17
	1	Pump casing, DIN .....	9612-4572-18	9612-4572-18	9612-4572-18
	1	Pump casing, ISO .....	9612-4572-19	9612-4572-19	9612-4572-19
	1	Pump casing, BS .....	9612-4572-20	9612-4572-20	9612-4572-20
<b>Alternatives</b>					
40	1	Impeller for impeller screw .....	9612-4084-10	9612-4084-10	9612-4084-06
41	1	Impeller screw .....	9612-1396-03	9612-1396-03	9612-1396-03

# Pump for 16 bar Inlet Pressure, Type LKHI-45 Single and Flushed Shaft Seal

26



## Pump for 16 bar Inlet Pressure, Type LKHI-45 Single and Flushed Shaft Seal

27

Pos.	Qty.	Denomination	4 kW	5.5-7.5 kW	11-15 kW
2	1	Shroud .....	9612-1390-03	9612-1390-08	9612-1390-05
2a	1	Edge list (Included in pos. 2)			
3	4	Screw .....	9611-99-3240	9611-99-3240	9611-99-3241
5	4	Distance sleeve .....		9611-99-2737	31438-0390-2
6	4	Washer for adaptor .....	9611-99-0676	9611-99-0676	9611-99-1886
7	4	Nut for adaptor .....	9611-99-0587	9611-99-0587	9611-99-2160
8	1	Compression ring with thread .....	9612-1336-02	9612-1336-05	9612-1336-03
9	1	Shaft with internal/external thread and pin (pos.10) .....	9612-1325-02	9612-1326-02	9612-1327-02
10	1	Connex pin .....	9611-99-0622	9611-99-0622	9611-99-0622
12	1	Compression ring without thread .....	9612-1337-02	9612-1337-05	9612-1337-03
13	6	Screw .....	9611-99-3196	9611-99-3197	9611-99-3198
13a	6	Washer .....	9611-99-3199	9611-99-3199	9611-99-3199
14	1	Screw for safety guard .....	9611-99-3239	9611-99-3239	9611-99-3239
16	1	Safety guard .....	9612-1311-06	9612-1311-07	9612-1311-08
17	1	Adaptor .....	9612-3424-01	9612-3425-01	9612-3426-01
18	4	Screw for adaptor .....	9611-99-1834	9611-99-2162	9611-99-2163
19	2	Nut .....	9611-99-0353	9611-99-0353	9611-99-0353
20	2	Washer .....	9611-99-2559	9611-99-2559	9611-99-2559
28	6	Cap nut .....	9611-99-2593	9611-99-2593	9611-99-2593
29	6	Washer .....	9611-99-1887	9611-99-1887	9611-99-1887
30	1	Back plate .....	9612-3892-20	9612-3892-20	9612-3892-20
33	1	Spacing ring .....	9612-3625-02	9612-3625-02	9612-3625-02
37	1	Rotating seal housing .....	9612-3624-01	9612-3624-01	9612-3624-01
39	1	Impeller .....	9612-5105-07	9612-5105-07	9612-5105-01
43	□○◆★ 1	Joint ring, EPDM (standard) .....	9611-99-2983	9611-99-2983	9611-99-2983
	1	Joint ring, NBR .....	9611-99-2984	9611-99-2984	9611-99-2984
	1	Joint ring, FPM .....	9611-99-2985	9611-99-2985	9611-99-2985
44	6	Bolt .....	9611-99-2169	9611-99-2169	9611-99-2169
45	1	Pump casing, IDF .....	9612-4924-16	9612-4924-16	9612-4924-16
	1	Pump casing, SMS .....	9612-4924-17	9612-4924-17	9612-4924-17
	1	Pump casing, DIN .....	9612-4924-18	9612-4924-18	9612-4924-18
	1	Pump casing, ISO .....	9612-4924-19	9612-4924-19	9612-4924-19
	1	Pump casing, BS .....	9612-4924-20	9612-4924-20	9612-4924-20
	1	Pump casing, flange DN100/DN80 .....	9612-1380-11	9612-1380-11	9612-1380-11
<b>Legs</b>					
46a	1	Support bar, right .....	9612-1322-05	9612-1322-06	9612-1322-03
46b	1	Support bar, left .....	9612-1323-05	9612-1323-06	9612-1323-03
47	4	Leg .....	9612-3967-01	9612-3967-01	9612-3967-01
48	4	Screw .....	9611-99-1126	9611-99-1126	9611-99-1126
49	4	Spring washer .....	9611-99-1887	9611-99-1887	9611-99-0676
50	4	Nut .....	9611-99-0353	9611-99-0353	9611-99-0587
51	4	Screw .....	9611-99-1911	9611-99-1911	9611-99-1834
52	4	Washer .....	9611-99-0786	9611-99-0786	9611-99-0706
<b>Alternatives</b>					
40	1	Impeller for impeller screw .....	9612-5105-08	9612-5105-08	9612-5105-02
41	1	Impeller screw .....	9612-1396-01	9612-1396-01	9612-1396-01
42	○★ 1	O-ring, EPDM .....	9611-99-2145	9611-99-2145	9611-99-2145
	1	O-ring, NBR .....	9611-99-2147	9611-99-2147	9611-99-2147
	1	O-ring, FPM .....	9611-99-2146	9611-99-2146	9611-99-2146
<b>Parts for flushed shaft seal</b>					
21	1	Seal housing for flushed seal .....	9612-3626-02	9612-3626-02	9612-3626-02
22	2	Screw .....	9611-99-4038	9611-99-4038	9611-99-4038
23	2	Tube .....	9612-3589-01	9612-3589-01	9612-3589-01
27	1	Sleeve .....	9612-3629-02	9612-3629-02	9612-3629-02

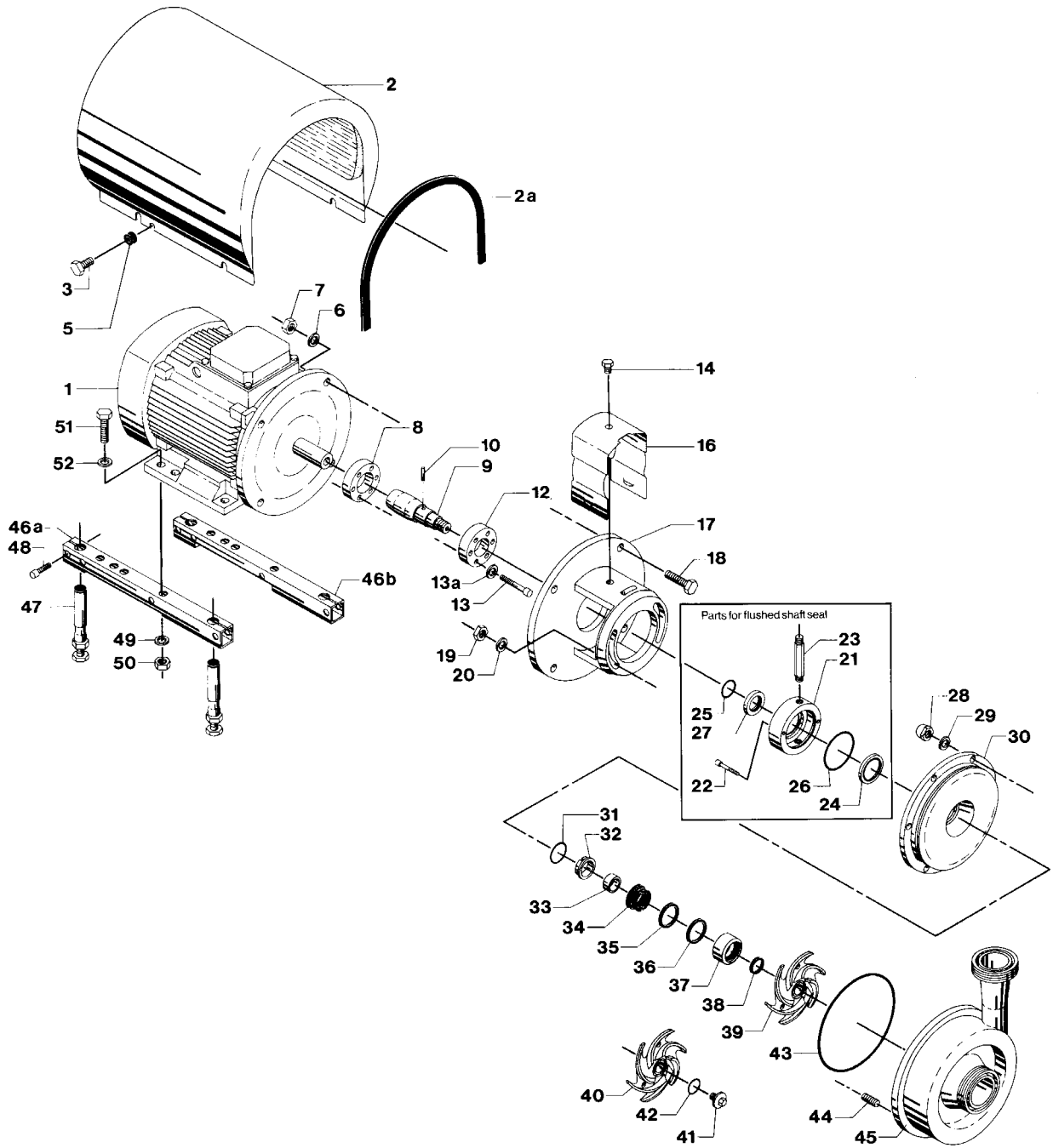
**Recommended Spare Parts: Service kits.**

900032/0

# Pump for 16 bar Inlet Pressure, Type LKHI-45 Single and Flushed Shaft Seal

(Same drawing as on page 26)

28



# Pump for 16 bar Inlet Pressure, Type LKHI-45 Single and Flushed Shaft Seal

Pos.	Qty.	Denomination	4 kW	5.5 kW	7.5 kW	11 kW	15 kW
<b>0-10 bar</b>							
1	1	Motor 220-240VD/380-420VY .....	9612-4028-07	9612-4028-15	9612-4028-30	31801-0122-1	31801-1194-1
	1	Motor 380-420VD/660-690VY .....	9612-4028-09	9612-4028-17	9612-4028-32	31801-0122-3	31801-1194-3
<b>10-16 bar</b> (Motors are with special ball bearing.)							
1	1	Motor 220-240VD/380-420VY .....	9612-4189-07	9612-4189-09	9612-4189-11	9612-4189-13	9612-4189-15
	1	Motor 380-420VD/660-690VY .....	9612-4189-08	9612-4189-10	9612-4189-12	9612-4189-14	9612-4189-16

**Pos. Qty. Denomination 4-15 kW**

**(0-10 bar)**

**Service kit for single shaft seal**

- Service kit, EPDM. .... 9611-92-2278
- Service kit, NBR. .... 9611-92-2279
- Service kit, FPM. .... 9611-92-2280

**Service kit for single shaft seal and impeller screw**

- Service kit, EPDM. .... 9611-92-2281
- Service kit, NBR. .... 9611-92-2282
- Service kit, FPM. .... 9611-92-2283

**Service kit for flushed shaft seal**

- ◆ Service kit, EPDM. .... 9611-92-2284
- ◆ Service kit, NBR. .... 9611-92-2285
- ◆ Service kit, FPM. .... 9611-92-2286

Shaft seal: See page 38-39

**Service kit for flushed shaft seal and impeller screw**

- \* Service kit, EPDM. .... 9611-92-2287
- \* Service kit, NBR. .... 9611-92-2288
- \* Service kit, FPM. .... 9611-92-2289

**(10-16 bar)**

**Service kit for single shaft seal**

- Service kit, EPDM. .... 9611-92-2194
- Service kit, NBR. .... 9611-92-2195
- Service kit, FPM. .... 9611-92-2196

**Service kit for single shaft seal and impeller screw**

- Service kit, EPDM. .... 9611-92-2197
- Service kit, NBR. .... 9611-92-2198
- Service kit, FPM. .... 9611-92-2199

**Service kit for flushed shaft seal**

- ◆ Service kit, EPDM. .... 9611-92-2200
- ◆ Service kit, NBR. .... 9611-92-2201
- ◆ Service kit, FPM. .... 9611-92-2202

**Service kit for flushed shaft seal and impeller screw**

- \* Service kit, EPDM. .... 9611-92-2203
- \* Service kit, NBR. .... 9611-92-2204
- \* Service kit, FPM. .... 9611-92-2205

Parts marked with //◆/\* are included in the service kits.

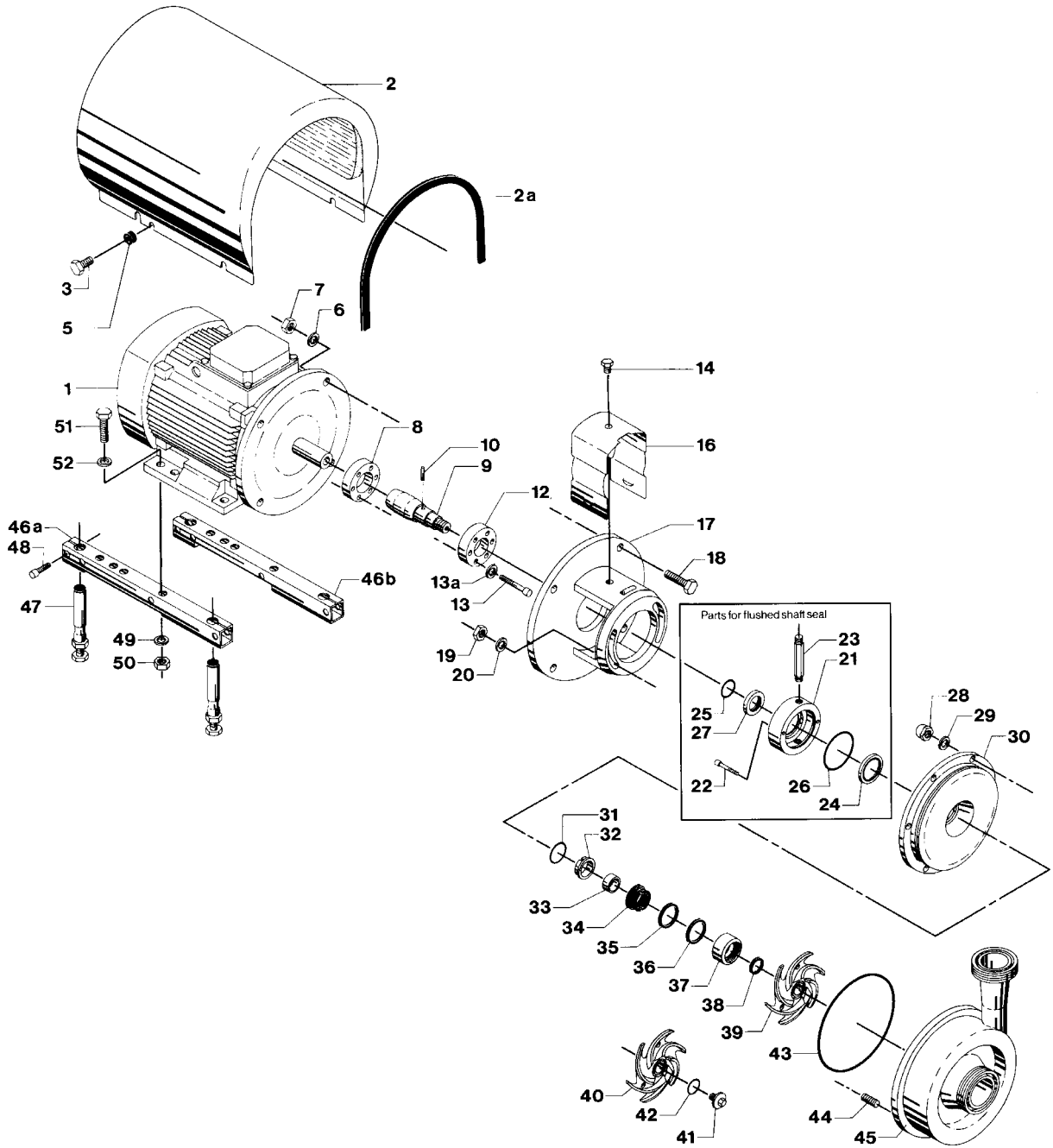
Conversion kit, single to flushed shaft seal 9611-92-2177 = Pos. 21, 22, 23, 24, 25, 26 and 27.

## Surface roughness, product wetted parts: Ra ≤ 0.8 μm

Pos.	Qty.	Denomination	4 kW	5.5-7.5 kW	11-15 kW
30	1	Back plate .....	9612-3892-22	9612-3892-22	9612-3892-22
39	1	Impeller .....	9612-5105-09	9612-5105-09	9612-5105-05
45	1	Pump casing, IDF .....	9612-4925-16	9612-4925-16	9612-4925-16
	1	Pump casing, SMS .....	9612-4925-17	9612-4925-17	9612-4925-17
	1	Pump casing, DIN .....	9612-4925-18	9612-4925-18	9612-4925-18
	1	Pump casing, ISO .....	9612-4925-19	9612-4925-19	9612-4925-19
	1	Pump casing, BS .....	9612-4925-20	9612-4925-20	9612-4925-20
<b>Alternatives</b>					
40	1	Impeller for impeller screw .....	9611-5105-10	9612-5105-10	9612-5105-06
41	1	Impeller screw .....	9612-1369-03	9612-1369-03	9612-1369-03

# Pump for 16 bar Inlet Pressure, Type LKHI-50 Single and Flushed Shaft Seal

30



# Pump for 16 bar Inlet Pressure, Type LKHI-50 Single and Flushed Shaft Seal

Pos.	Qty.	Denomination	5.5-7.5 kW	11-18.5 kW	22 kW
2	1	Shroud .....	9612-1390-08	9612-1390-05	9612-1390-06
2a	1	Edge list (Included in pos. 2)			
3	4	Screw .....	9611-99-3240	9611-99-3241	9611-99-3242
5	4	Distance sleeve .....	9611-99-2737	31438-0390-2	31438-0390-1
6	4	Washer for adaptor .....	9611-99-0676	9611-99-1886	9611-99-1886
7	4	Nut for adaptor .....	9611-99-0587	9611-99-2160	9611-99-2160
8	1	Compression ring with thread .....	9612-1336-05	9612-1336-03	9612-1336-04
9	1	Shaft with internal/external thread and pin (pos.10) .....	9612-1326-02	9612-1327-02	9612-1328-02
10	1	Connex pin .....	9611-99-0622	9611-99-0622	9611-99-0622
12	1	Compression ring without thread .....	9612-1337-05	9612-1337-03	9612-1337-04
13	6	Screw .....	9611-99-3197	9611-99-3198	9611-99-3198
13a	6	Washer .....	9611-99-3199	9611-99-3199	9611-99-3199
14	1	Screw for safety guard .....	9611-99-3239	9611-99-3239	9611-99-3239
16	1	Safety guard .....	9612-1311-07	9612-1311-08	9612-1311-08
17	1	Adaptor .....	9612-3425-01	9612-3426-01	9612-3426-01
18	4	Screw for adaptor .....	9611-99-2162	9611-99-2163	9611-99-2163
19	2	Nut .....	9611-99-0353	9611-99-0353	9611-99-0353
20	2	Washer .....	9611-99-2559	9611-99-2559	9611-99-2559
28	6	Cap nut .....	9611-99-2593	9611-99-2593	9611-99-2593
29	6	Washer .....	9611-99-1887	9611-99-1887	9611-99-1887
30	1	Back plate .....	9612-3892-18	9612-3892-18	9612-3892-18
33	1	Spacing ring .....	9612-3625-02	9612-3625-02	9612-3625-02
37	1	Rotating seal housing .....	9612-3624-01	9612-3624-01	9612-3624-01
39	1	Impeller .....	9612-4085-07	9612-4085-01	9612-4085-01
43	□○◆★	Joint ring, EPDM (standard) .....	9611-99-2171	9611-99-2171	9611-99-2171
	1	Joint ring, NBR .....	9611-99-2173	9611-99-2173	9611-99-2173
	1	Joint ring, FPM .....	9611-99-2172	9611-99-2172	9611-99-2172
44	6	Bolt .....	9611-99-2169	9611-99-2169	9611-99-2169
45	1	Pump casing, IDF .....	9612-1398-21	9612-1398-21	9612-1398-21
	1	Pump casing, SMS .....	9612-1398-22	9612-1398-22	9612-1398-22
	1	Pump casing, DIN .....	9612-1398-23	9612-1398-23	9612-1398-23
	1	Pump casing, ISO .....	9612-1398-24	9612-1398-24	9612-1398-24
	1	Pump casing, BS .....	9612-1398-25	9612-1398-25	9612-1398-25
	1	Pump casing, flange DN100/DN80 .....	9612-1380-05	9612-1380-05	9612-1380-05
<b>Legs</b>					
46a	1	Support bar, right .....	9612-1322-06	9612-1322-03	9612-1322-04
46b	1	Support bar, left .....	9612-1323-06	9612-1323-03	9612-1323-04
47	4	Leg .....	9612-3967-01	9612-3967-01	9612-3967-01
48	4	Screw .....	9611-99-1126	9611-99-1126	9611-99-1126
49	4	Spring washer .....	9611-99-1887	9611-99-0676	9611-99-0676
50	4	Nut .....	9611-99-0353	9611-99-0587	9611-99-0587
51	4	Screw .....	9611-99-1911	9611-99-1834	9611-99-1834
52	4	Washer .....	9611-99-0786	9611-99-0706	9611-99-0706
<b>Alternatives</b>					
40	1	Impeller for impeller screw .....	9612-4085-08	9612-4085-02	9612-4085-02
41	1	Impeller screw .....	9612-1396-01	9612-1396-01	9612-1396-01
42	○★	O-ring, EPDM .....	9611-99-2145	9611-99-2145	9611-99-2145
	1	O-ring, NBR .....	9611-99-2147	9611-99-2147	9611-99-2147
	1	O-ring, FPM .....	9611-99-2146	9611-99-2146	9611-99-2146
<b>Parts for flushed shaft seal</b>					
21	1	Seal housing for flushed seal .....	9612-3626-02	9612-3626-02	9612-3626-02
22	2	Screw .....	9611-99-4038	9611-99-4038	9611-99-4038
23	2	Tube .....	9612-3589-01	9612-3589-01	9612-3589-01
27	1	Sleeve .....	9612-3629-02	9612-3629-02	9612-3629-02

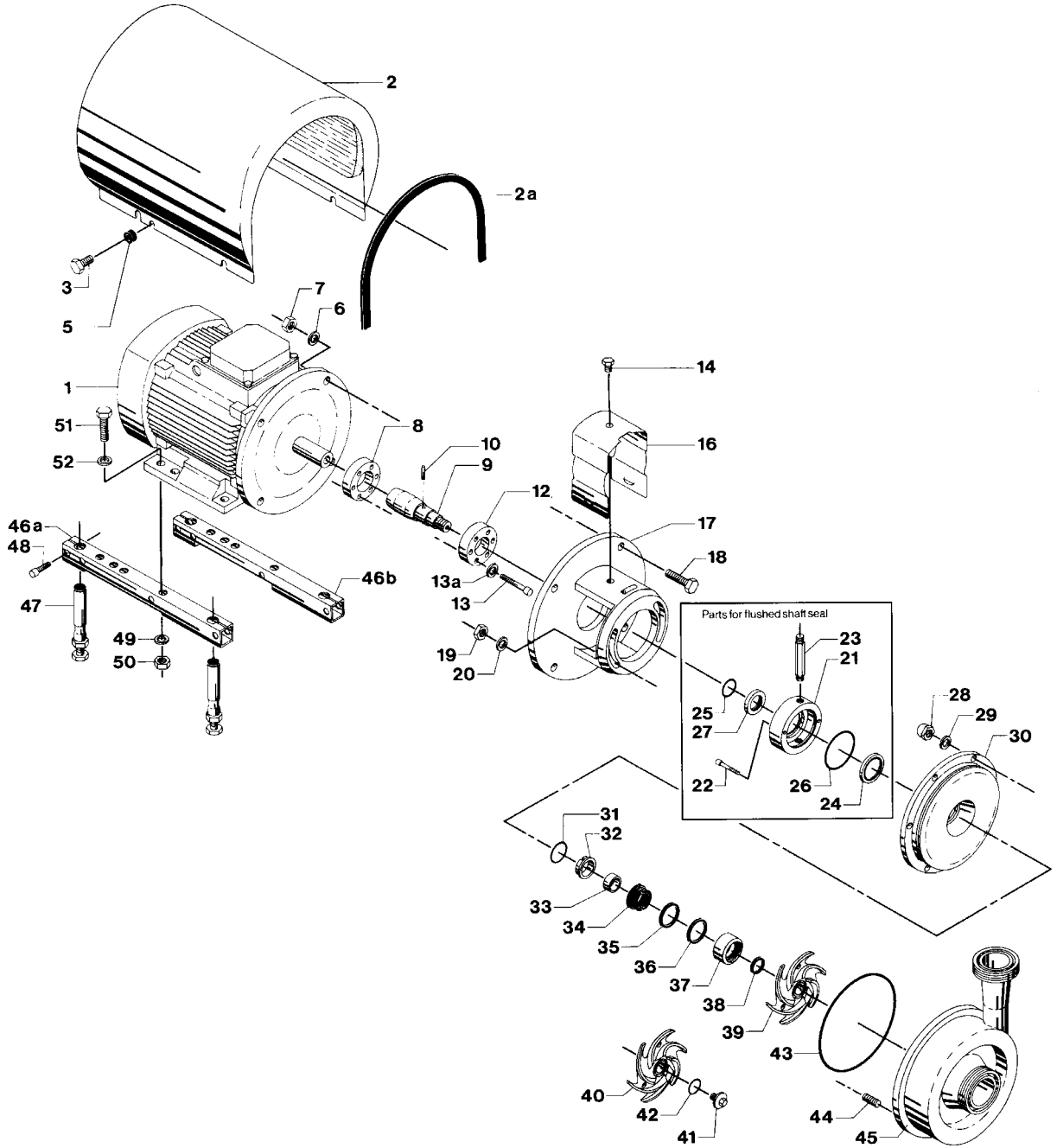
**Recommended Spare Parts: Service kits.**

900033/0

# Pump for 16 bar Inlet Pressure, Type LKHI-50 Single and Flushed Shaft Seal

32

(Same drawing as on page 30)





# Pump for 16 bar Inlet Pressure, Type LKHI-50 Single and Flushed Shaft Seal

Pos. Qty. Denomination	5.5 kW	7.5 kW	11 kW	15 kW	18.5 kW	22 kW
<b>0-10 bar</b>						
1 1 Motor 220-240VD/380-420VY .....	9612-4028-15	9612-4028-30	31801-0122-1	31801-1194-1	9612-3454-13	9612-3454-15
1 1 Motor 380-420VD/660-690VY .....	9612-4028-17	9612-4028-32	31801-0122-3	31801-1194-3	9612-3454-14	9612-3454-16
<b>10-16 bar</b> (Motors are with special ball bearing)						
1 1 Motor 220-240VD/380-420VY .....	9612-4189-09	9612-4189-11	9612-4189-13	9612-4189-15	9612-4189-17	9612-4189-19
1 1 Motor 380-420VD/660-690VY .....	9612-4189-10	9612-4189-12	9612-4189-14	9612-4189-16	9612-4189-18	9612-4189-20

Pos. Qty. Denomination	5.5-22 kW
------------------------	-----------

**(0-10 bar)**

**Service kit for single shaft seal**

- Service kit, EPDM. .... 9611-92-2290
- Service kit, NBR. .... 9611-92-2291
- Service kit, FPM. .... 9611-92-2292

**Shaft seal: See page 38-39**

**Service kit for single shaft seal and impeller screw**

- Service kit, EPDM. .... 9611-92-2293
- Service kit, NBR. .... 9611-92-2294
- Service kit, FPM. .... 9611-92-2295

**Service kit for flushed shaft seal**

- ◆ Service kit, EPDM. .... 9611-92-2296
- ◆ Service kit, NBR. .... 9611-92-2297
- ◆ Service kit, FPM. .... 9611-92-2298

**Service kit for flushed shaft seal and impeller screw**

- \* Service kit, EPDM. .... 9611-92-2299
- \* Service kit, NBR. .... 9611-92-2300
- \* Service kit, FPM. .... 9611-92-2301

**(10-16 bar)**

**Service kit for single shaft seal**

- Service kit, EPDM. .... 9611-92-2163
- Service kit, NBR. .... 9611-92-2164
- Service kit, FPM. .... 9611-92-2165

**Service kit for single shaft seal and impeller screw**

- Service kit, EPDM. .... 9611-92-2166
- Service kit, NBR. .... 9611-92-2167
- Service kit, FPM. .... 9611-92-2168

**Service kit for flushed shaft seal**

- ◆ Service kit, EPDM. .... 9611-92-2169
- ◆ Service kit, NBR. .... 9611-92-2170
- ◆ Service kit, FPM. .... 9611-92-2171

**Service kit for flushed shaft seal and impeller screw**

- \* Service kit, EPDM. .... 9611-92-2172
- \* Service kit, NBR. .... 9611-92-2173
- \* Service kit, FPM. .... 9611-92-2174

Parts marked with //◆/\* are included in the service kits.

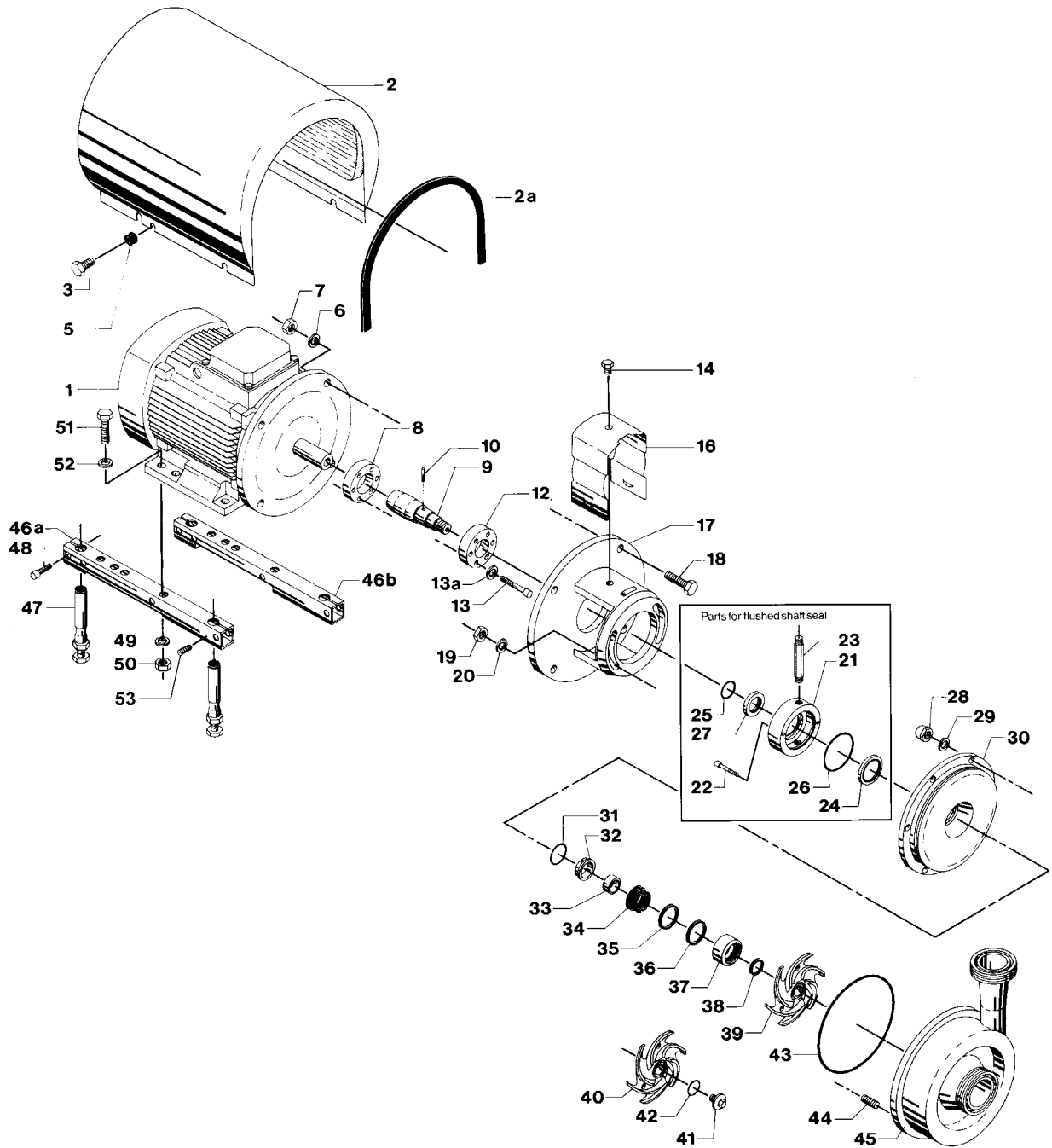
Conversion kit, single to flushed shaft seal 9611-92-2177 = Pos. 21, 22, 23, 24, 25, 26 and 27.

## Surface roughness, product wetted parts: Ra ≤ 0.8 μm

Pos. Qty. Denomination	5.5-7.5 kW	11kW	15-18.5 kW	22 kW
30 1 Back plate .....	9612-3892-18	9612-3892-18	9612-3892-18	9612-3892-18
39 1 Impeller .....	9612-4085-09	9612-4085-05	9612-4085-05	9612-4085-05
45 1 Pump casing, IDF .....	9612-4572-21	9612-4572-21	9612-4572-21	9612-4572-21
1 Pump casing, SMS .....	9612-4572-22	9612-4572-22	9612-4572-22	9612-4572-22
1 Pump casing, DIN .....	9612-4572-23	9612-4572-23	9612-4572-23	9612-4572-23
1 Pump casing, ISO .....	9612-4572-24	9612-4572-24	9612-4572-24	9612-4572-24
1 Pump casing, BS .....	9612-4572-25	9612-4572-25	9612-4572-25	9612-4572-25
<b>Alternatives</b>				
40 1 Impeller for impeller screw .....	9611-4085-10	9612-4085-06	9612-4085-06	9612-4085-06
41 1 Impeller screw .....	9612-1369-03	9612-1369-03	9612-1369-03	9612-1369-03

# Pump for 16 bar Inlet Pressure, Type LKHI-60 Single and Flushed Shaft Seal

34



## Pump for 16 bar Inlet Pressure, Type LKHI-60 Single and Flushed Shaft Seal

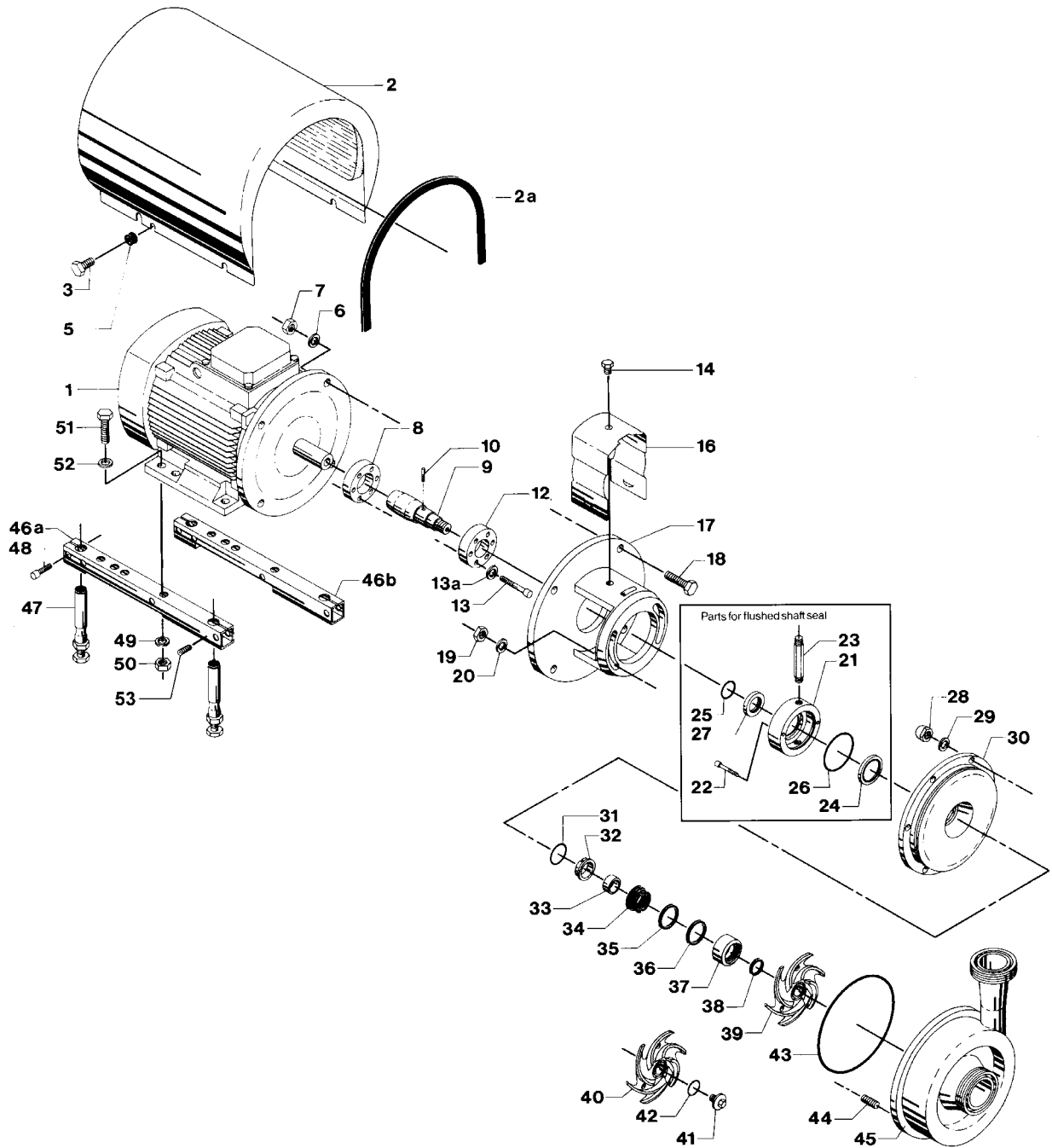
Pos.	Qty.	Denomination	5.5-7.5 kW	11-15 kW	18.5 kW	22 kW	30 kW
2	1	Shroud ABB .....	9612-1390-08	9612-1390-05	9612-1390-05	9612-1390-06	9612-1390-07 <sup>1)</sup>
	1	Shroud BROOK (Period 9907-)					9612-5938-01
2a	1	Edge list (Included in pos. 2)					
3	4	Screw .....	9611-99-3240	9611-99-3241	9611-99-3241	9611-99-3242	9611-99-3243
5	4	Distance sleeve .....	9611-99-2737	31438-0390-2	31438-0390-2	31438-0390-1	31438-0390-3
6	4	Washer for adaptor .....	9611-99-0676	9611-99-1886	9611-99-1886	9611-99-1886	9611-99-1886
7	4	Nut for adaptor .....	9611-99-0587	9611-99-2160	9611-99-2160	9611-99-2160	9611-99-2160
8	1	Compression ring with thread ..	9612-1336-05	9612-1336-03	9612-1336-03	9612-1336-04	9612-1336-07
9	1	Shaft with internal/external thread and pin (pos.10) .....	9612-1326-02	9612-1327-02	9612-1327-02	9612-1328-02	9612-2329-02
10	1	Connex pin .....	9611-99-0622	9611-99-0622	9611-99-0622	9611-99-0622	9611-99-0622
12	1	Compression ring without thread .....	9612-1337-05	9612-1337-03	9612-1337-03	9612-1337-04	9612-1337-07
13	6	Screw .....	9611-99-3197	9611-99-3198	9611-99-3198	9611-99-3198	9611-99-3198
13a	6	Washer .....	9611-99-3199	9611-99-3199	9611-99-3199	9611-99-3199	9611-99-3199
14	1	Screw for safety guard .....	9611-99-3239	9611-99-3239	9611-99-3239	9611-99-3239	9611-99-3239
16	1	Safety guard .....	9612-1311-07	9612-1311-08	9612-1311-08	9612-1311-08	9612-1311-08
17	1	Adaptor .....	9612-3425-01	9612-3426-01	9612-3426-01	9612-3426-01	9612-3427-01
18	4	Screw for adaptor .....	9611-99-2162	9611-99-2163	9611-99-2163	9611-99-2164	9611-99-2164
19	2	Nut .....	9611-99-0353	9611-99-0353	9611-99-0353	9611-99-0353	9611-99-0353
20	2	Washer .....	9611-99-2559	9611-99-2559	9611-99-2559	9611-99-2559	9611-99-2559
28	6	Cap nut .....	9611-99-2593	9611-99-2593	9611-99-2593	9611-99-2593	9611-99-2593
29	6	Spring washer .....	9611-99-1887	9611-99-1887	9611-99-1887	9611-99-1887	9611-99-1887
30	1	Back plate .....	9612-3892-07	9612-3892-07	9612-3892-07	9612-3892-07	9612-3892-07
33	1	Spacing ring .....	9612-3625-02	9612-3625-02	9612-3625-02	9612-3625-02	9612-3625-02
37	1	Rotating seal housing .....	9612-3624-01	9612-3624-01	9612-3624-01	9612-3624-01	9612-3624-01
39	1	Impeller .....	9612-4086-07	9612-4086-07	9612-4086-01	9612-4086-01	9612-4086-01
43	1	Joint ring, EPDM (standard) .....	9611-99-2171	9611-99-2171	9611-99-2171	9611-99-2171	9611-99-2171
	1	Joint ring, NBR .....	9611-99-2173	9611-99-2173	9611-99-2173	9611-99-2173	9611-99-2173
	1	Joint ring, FPM .....	9611-99-2172	9611-99-2172	9611-99-2172	9611-99-2172	9611-99-2172
44	1	Bolt .....	9611-99-2169	9611-99-2169	9611-99-2169	9611-99-2169	9611-99-2169
45	1	Pump casing, IDF .....	9612-3554-01	9612-3554-01	9612-3554-01	9612-3554-01	9612-3554-01
	1	Pump casing, SMS .....	9612-3554-02	9612-3554-02	9612-3554-02	9612-3554-02	9612-3554-02
	1	Pump casing, DIN .....	9612-3554-03	9612-3554-03	9612-3554-03	9612-3554-03	9612-3554-03
	1	Pump casing, ISO .....	9612-3554-04	9612-3554-04	9612-3554-04	9612-3554-04	9612-3554-04
	1	Pump casing, BS .....	9612-3554-05	9612-3554-05	9612-3554-05	9612-3554-05	9612-3554-05
	1	Pump casing, DS .....	9612-3554-06	9612-3554-06	9612-3554-06	9612-3554-06	9612-3554-06
	1	Pump casing, NW150/100 .....	9612-3554-07	9612-3554-07	9612-3554-07	9612-3554-07	9612-3554-07
	1	Pump casing, .....	9612-3554-08	9612-3554-08	9612-3554-08	9612-3554-08	9612-3554-08
	1	152.4/101.6 (clamp) Pump casing, .....	9612-1380-06	9612-1380-06	9612-1380-06	9612-1380-06	9612-1380-06
	1	flange DN100/DN100 Pump casing, .....	9612-1380-07	9612-1380-07	9612-1380-07	9612-1380-07	9612-1380-07
	1	flange DN150/DN100					
<b>Legs</b>							
46a	1	Support bar, right .....	9612-1322-06	9612-1322-03	9612-1322-03	9612-1322-04	9612-3422-01
46b	1	Support bar, left .....	9612-1323-06	9612-1323-03	9612-1323-03	9612-1323-04	9612-3422-01
47	4	Leg .....	9612-3967-01	9612-3967-01	9612-3967-01	9612-3967-01	9612-3967-01
48	4	Screw .....	9611-99-1126	9611-99-1126	9611-99-1126	9611-99-1126	9611-99-1126
49	4	Spring washer .....	9611-99-1887	9611-99-0676	9611-99-0676	9611-99-0676	9611-99-0676
50	4	Nut .....	9611-99-0353	9611-99-0587	9611-99-0587	9611-99-0587	9611-99-0587
51	4	Screw .....	9611-99-1911	9611-99-1834	9611-99-1834	9611-99-1834	9611-99-3680
52	4	Washer .....	9611-99-0786	9611-99-0706	9611-99-0706	9611-99-0706	9611-99-0703
53	4	Pivot screw .....					9611-99-1763
<b>Alternatives</b>							
40	1	Impeller for impeller screw .....	9612-4086-08	9612-4086-08	9612-4086-02	9612-4086-02	9612-4086-02
41	1	Impeller screw .....	9612-1396-01	9612-1396-01	9612-1396-01	9612-1396-01	9612-1396-01
42	1	O-ring, EPDM .....	9611-99-2145	9611-99-2145	9611-99-2145	9611-99-2145	9611-99-2145
	1	O-ring, NBR .....	9611-99-2147	9611-99-2147	9611-99-2147	9611-99-2147	9611-99-2147
	1	O-ring, FPM .....	9611-99-2146	9611-99-2146	9611-99-2146	9611-99-2146	9611-99-2146
<b>Parts for flushed shaft seal</b>							
21	1	Seal housing for flushed seal ..	9612-3626-02	9612-3626-02	9612-3626-02	9612-3626-02	9612-3626-02
22	2	Screw .....	9611-99-4038	9611-99-4038	9611-99-4038	9611-99-4038	9611-99-4038
23	2	Tube .....	9612-3589-01	9612-3589-01	9612-3589-01	9612-3589-01	9612-3589-01
27	1	Sleeve .....	9612-3629-02	9612-3629-02	9612-3629-02	9612-3629-02	9612-3629-02

**Recommended Spare Parts: Service kits.**

# Pump for 16 bar Inlet Pressure, Type LKHI-60 Single and Flushed Shaft Seal

(Same drawing as on page 34)

36



# Pump for 16 bar Inlet Pressure, Type LKHI-60 Single and Flushed Shaft Seal

Pos.	Qty.	Denomination	5.5 kW	7.5 kW	11 kW	15 kW	18.5 kW	22 kW	30 kW
<b>0-10 bar</b>									
1	1	Motor ABB <sup>2)</sup> .....	9612-4028-15	9612-4028-30	31801-0122-1	31801-1194-1	9611-3454-13	9611-3454-15	9612-3454-03 <sup>1)</sup>
	1	Motor ABB <sup>3)</sup> .....	9612-4028-17	9612-4028-32	31801-0122-3	31801-1194-3	9611-3454-14	9611-3454-16	9612-3454-04 <sup>1)</sup>
<b>0-16 bar</b>									
	1	MotorBROOK <sup>2)</sup> . (Period 9907-)							9612-6055-01
	1	MotorBROOK <sup>3)</sup> . (Period 9907-)							9612-6055-02
<b>10-16 bar</b> (Motors are with special bearing.)									
1	1	Motor ABB <sup>2)</sup> .....	9612-4189-09	9612-4189-11	9612-4189-13	9612-4189-15	9612-4189-17	9612-4189-19	9612-4189-21 <sup>1)</sup>
	1	Motor ABB <sup>3)</sup> .....	9612-4189-10	9612-4189-12	9612-4189-14	9612-4189-16	9612-4189-18	9612-4189-20	9612-4189-22 <sup>1)</sup>

<sup>1)</sup> ABB motors (Period -9907)

<sup>2)</sup> 3~, 50 Hz, 220-240VD/380-420VY-Option  
3~, 60 Hz, 250-280VD/440-480VY-Option

<sup>3)</sup> 3~, 50 Hz, 380-420VD/660-690VY-Standard  
3~, 60 Hz, 440-480VD-Standard

**Pos. Qty. Denomination 5.5-30 kW**

**(0-10 bar)**

**Service kit for single shaft seal**

- ✦ Service kit, EPDM. .... 9611-92-2290
- ✦ Service kit, NBR. .... 9611-92-2291
- ✦ Service kit, FPM. .... 9611-92-2292

**Service kit for single shaft seal and impeller screw**

- Service kit, EPDM. .... 9611-92-2293
- Service kit, NBR. .... 9611-92-2294
- Service kit, FPM. .... 9611-92-2295

**Service kit for flushed shaft seal**

- ◆ Service kit, EPDM. .... 9611-92-2296
- ◆ Service kit, NBR. .... 9611-92-2297
- ◆ Service kit, FPM. .... 9611-92-2298

**Service kit for flushed shaft seal and impeller screw**

- Service kit, EPDM. .... 9611-92-2299
- Service kit, NBR. .... 9611-92-2300
- Service kit, FPM. .... 9611-92-2301

**(10-16 bar)**

**Service kit for single shaft seal**

- ✦ Service kit, EPDM. .... 9611-92-2163
- ✦ Service kit, NBR. .... 9611-92-2164
- ✦ Service kit, FPM. .... 9611-92-2165

**Service kit for single shaft seal and impeller screw**

- Service kit, EPDM. .... 9611-92-2166
- Service kit, NBR. .... 9611-92-2167
- Service kit, FPM. .... 9611-92-2168

**Service kit for flushed shaft seal**

- ◆ Service kit, EPDM. .... 9611-92-2169
- ◆ Service kit, NBR. .... 9611-92-2170
- ◆ Service kit, FPM. .... 9611-92-2171

**Service kit for flushed shaft seal and impeller screw**

- Service kit, EPDM. .... 9611-92-2172
- Service kit, NBR. .... 9611-92-2173
- Service kit, FPM. .... 9611-92-2174

**Shaft seal: See page 38-39**

Parts marked with ✦/○/◆/□ are included in the service kits.

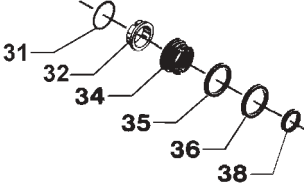
**Conversion kit, single to flushed shaft seal 9611-92-2177 = Pos. 21, 22, 23, 24, 25, 26 and 27.**

## Surface roughness, product wetted parts: Ra ≤ 0.8 μm

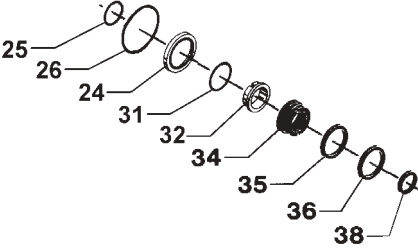
Pos.	Qty.	Denomination	5.5-7.5 kW	11-15 kW	18.5 kW	22 kW	30 kW
30	1	Back plate .....	9612-3892-18	9612-3892-18	9612-3892-18	9612-3892-18	9612-3892-18
39	1	Impeller .....	9612-4086-09	9612-4086-09	9612-4086-05	9612-4086-05	9612-4086-05
45	1	Pump casing, IDF .....	9612-3554-09	9612-3554-09	9612-3554-09	9612-3554-09	9612-3554-09
	1	Pump casing, SMS .....	9612-3554-10	9612-3554-10	9612-3554-10	9612-3554-10	9612-3554-10
	1	Pump casing, DIN .....	9612-3554-11	9612-3554-11	9612-3554-11	9612-3554-11	9612-3554-11
	1	Pump casing, ISO .....	9612-3554-12	9612-3554-12	9612-3554-12	9612-3554-12	9612-3554-12
	1	Pump casing, BS .....	9612-3554-13	9612-3554-13	9612-3554-13	9612-3554-13	9612-3554-13
<b>Alternatives</b>							
40	1	Impeller for impeller screw .....	9612-4086-10	9612-4086-10	9612-4086-06	9612-4086-06	9612-4086-06
41	1	Impeller screw .....	9612-1396-03	9612-1396-03	9612-1396-03	9612-1396-03	9612-1396-03
900034/2							

# Centrifugal Pump, Type LKHI 10 - 60 Shaft Seals

Single Internal Shaft Seal



Flushed Internal Shaft Seal



# Centrifugal Pump, Type LKHI 10 - 60 Shaft Seals

**Pos. Qty. Denomination**

**Single shaft seal (0-10 bar)**

△ ○	Shaft seal complete, EPDM (Standard) ...	9612-3622-01
31	1 O-ring .....	9611-99-2727
32	1 Stationary seal ring, SiC. ....	9612-3633-01
34	1 Rotating seal ring, C .....	9612-3634-01
35	1 Quad ring .....	9611-99-2730
36	1 PTFE support ring .....	9612-4571-01
38	1 Quad ring .....	9611-99-2733

△ ○	Shaft seal complete, NBR .....	9612-3622-02
31	1 O-ring .....	9611-99-2728
32	1 Stationary seal ring, SiC. ....	9612-3633-01
34	1 Rotating seal ring, C .....	9612-3634-01
35	1 Quad ring .....	9611-99-2731
36	1 PTFE support ring .....	9612-4571-01
38	1 Quad ring .....	9611-99-2734

△ ○	Shaft seal complete, FPM .....	9612-3622-03
31	1 O-ring .....	9611-99-2729
32	1 Stationary seal ring, SiC. ....	9612-3633-01
34	1 Rotating seal ring, C .....	9612-3634-01
35	1 Quad ring .....	9611-99-2732
36	1 PTFE support ring .....	9612-4571-01
38	1 Quad ring .....	9611-99-2735

**Flushed shaft seal (0-10 bar)**

◆*	Shaft seal complete, EPDM (Standard) ...	9612-3622-07
24	1 Lip seal .....	9611-99-2860
25	1 O-ring, EPDM .....	9611-99-2754
26	1 O-ring, EPDM .....	9611-99-2753
31	1 O-ring .....	9611-99-2727
32	1 Stationary seal ring, SiC. ....	9612-3633-01
34	1 Rotating seal ring, C .....	9612-3634-01
35	1 Quad ring .....	9611-99-2730
36	1 PTFE support ring .....	9612-4571-01
38	1 Quad ring .....	9611-99-2733

◆*	Shaft seal complete, NBR .....	9612-3622-08
24	1 Lip seal .....	9611-99-2860
25	1 O-ring, EPDM .....	9611-99-2754
26	1 O-ring, EPDM .....	9611-99-2753
31	1 O-ring .....	9611-99-2728
32	1 Stationary seal ring, SiC. ....	9612-3633-01
34	1 Rotating seal ring, C .....	9612-3634-01
35	1 Quad ring .....	9611-99-2734
36	1 PTFE support ring .....	9612-4571-01
38	1 Quad ring .....	9611-99-2731

◆*	Shaft seal complete, FPM .....	9612-3622-09
24	1 Lip seal .....	9611-99-2860
25	1 O-ring, EPDM .....	9611-99-2754
26	1 O-ring, EPDM .....	9611-99-2753
31	1 O-ring .....	9611-99-2729
32	1 Stationary seal ring, SiC. ....	9612-3633-01
34	1 Rotating seal ring, C .....	9612-3634-01
35	1 Quad ring .....	9611-99-2732
36	1 PTFE support ring .....	9612-4571-01
38	1 Quad ring .....	9611-99-2735

**Pos. Qty. Denomination**

**Single shaft seal (10-16 bar)**

△ ○	Shaft seal complete, EPDM .....	9612-3622-04
31	1 O-ring .....	9611-99-2727
32	1 Stationary seal ring, SiC. ....	9612-3633-01
34	1 Rotating seal ring, SiC. ....	9612-3634-02
35	1 Quad ring .....	9611-99-2730
36	1 PTFE support ring .....	9612-4571-01
38	1 Quad ring .....	9611-99-2733

△ ○	Shaft seal complete, NBR .....	9612-3622-05
31	1 O-ring .....	9611-99-2728
32	1 Stationary seal ring, SiC. ....	9612-3633-01
34	1 Rotating seal ring, SiC. ....	9612-3634-02
35	1 Quad ring .....	9611-99-2731
36	1 PTFE support ring .....	9612-4571-01
38	1 Quad ring .....	9611-99-2734

△ ○	Shaft seal complete, FPM .....	9612-3622-06
31	1 O-ring .....	9611-99-2729
32	1 Stationary seal ring, SiC. ....	9612-3633-01
34	1 Rotating seal ring, SiC. ....	9612-3634-02
35	1 Quad ring .....	9611-99-2732
36	1 PTFE support ring .....	9612-4571-01
38	1 Quad ring .....	9611-99-2735

**Flushed shaft seal (10-16 bar)**

◆*	Shaft seal complete, EPDM .....	9612-3622-10
24	1 Lip seal .....	9611-99-2860
25	1 O-ring, EPDM .....	9611-99-2754
26	1 O-ring, EPDM .....	9611-99-2753
31	1 O-ring .....	9611-99-2727
32	1 Stationary seal ring, SiC. ....	9612-3633-01
34	1 Rotating seal ring, SiC. ....	9612-3634-02
35	1 Quad ring .....	9611-99-2730
36	1 PTFE support ring .....	9612-4571-01
38	1 Quad ring .....	9611-99-2733

◆*	Shaft seal complete, NBR .....	9612-3622-11
24	1 Lip seal .....	9611-99-2860
25	1 O-ring, EPDM .....	9611-99-2754
26	1 O-ring, EPDM .....	9611-99-2753
31	1 O-ring .....	9611-99-2728
32	1 Stationary seal ring, SiC. ....	9612-3633-01
34	1 Rotating seal ring, SiC. ....	9612-3634-02
35	1 Quad ring .....	9611-99-2731
36	1 PTFE support ring .....	9612-4571-01
38	1 Quad ring .....	9611-99-2734

◆*	Shaft seal complete, FPM .....	9612-3622-12
24	1 Lip seal .....	9611-99-2860
25	1 O-ring, EPDM .....	9611-99-2754
26	1 O-ring, EPDM .....	9611-99-2753
31	1 O-ring .....	9611-99-2729
32	1 Stationary seal ring, SiC. ....	9612-3633-01
34	1 Rotating seal ring, SiC. ....	9612-3634-02
35	1 Quad ring .....	9611-99-2732
36	1 PTFE support ring .....	9612-4571-01
38	1 Quad ring .....	9611-99-2735

How to contact Alfa Laval  
Contact details for all countries are  
continually updated on our website.  
Please visit [www.alfalaval.com](http://www.alfalaval.com) to  
access the information direct.