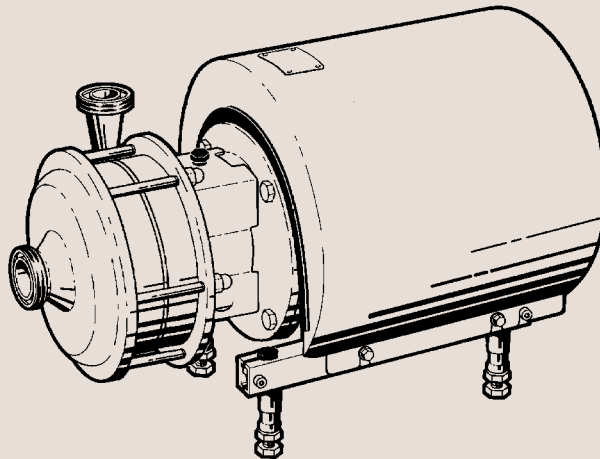


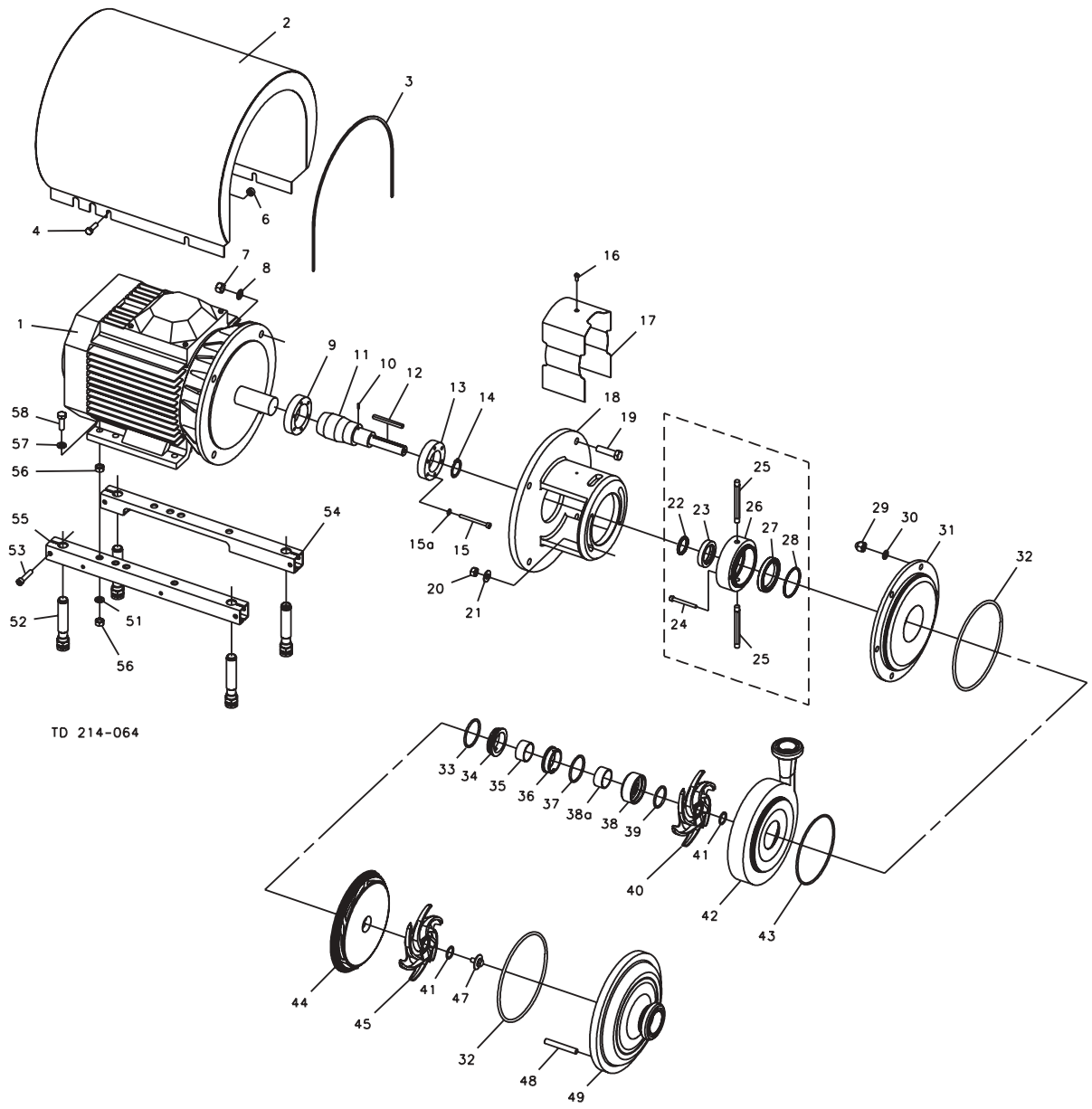


## Spare Parts

LKH-110, -120 Multi-Stage Centrifugal Pump



SP70777-GB5 2003-02



TD 214-064

1. Parts List / Exploded Drawing

1.2 LKH-112, Single and Flushed Shaft Seal

Pos.	Qty.	Denomination	2.2 kW	3 kW	4 kW	5.5-7.5 kW	11-18.5 kW
4	4	Screw .....	9611-99-3240	9611-99-3240	9611-99-3240	9611-99-3240	9611-99-3241
6	4	Spacing sleeve .....				9611-99-2737	31438-0390-2
7	4	Nut for adaptor .....	9611-99-0353	9611-99-0587	9611-99-0587	9611-99-0587	9611-99-2160
8	4	Washer for adaptor .....	9611-99-1887	9611-99-0676	9611-99-0676	9611-99-0676	9611-99-1886
9	1	Compression ring with thread .....	9612-1336-01	9612-1336-02	9612-1336-02	9612-1336-05	9612-1336-03
10	1	Connex pin .....	9611-99-0622	9611-99-0622	9611-99-0622	9611-99-0622	9611-99-0622
11	1	Shaft .....		9612-3619-01	9612-3619-01	9612-3620-01	9612-3621-01
	1	Shaft with retaining ring (pos.14) .....	9612-3896-01				
	1	Shaft with pin (pos.10) .....		9612-3619-03	9612-3619-03	9612-3620-04	9612-3621-04
	1	Shaft with retaining ring (14) and pin (10) ....	9612-3896-02				
12	1	Key .....	9611-99-2756	9611-99-2756	9611-99-2756	9611-99-2756	9611-99-2756
13	1	Compression ring without thread .....	9612-1337-01	9612-1337-02	9612-1337-02	9612-1337-05	9612-1337-03
14	1	Retaining ring .....	9611-99-2307				
15	6	Screw .....	9611-99-3196	9611-99-3196	9611-99-3196	9611-99-3197	9611-99-3197
15a	6	Washer .....	9611-99-3199	9611-99-3199	9611-99-3199	9611-99-3199	9611-99-3199
16	1	Screw for adaptor guard .....	9611-99-3239	9611-99-3239	9611-99-3239	9611-99-3239	9611-99-3239
17	1	Adaptor guard .....	9612-1311-05	9612-1311-06	9612-1311-06	9612-1311-07	9612-1311-08
18	1	Adaptor .....	9612-3423-01	9612-3424-01	9612-3424-01	9612-3425-01	9612-3426-01
19	4	Screw for adaptor .....	9611-99-2161	9611-99-1834	9611-99-1834	9611-99-2162	9611-99-2163
20	2	Nut .....	9611-99-0353	9611-99-0353	9611-99-0353	9611-99-0353	9611-99-0353
21	2	Washer .....	9611-99-2559	9611-99-2559	9611-99-2559	9611-99-2559	9611-99-2559
29	6	Cap nut .....	9611-99-2593	9611-99-2593	9611-99-2593	9611-99-2593	9611-99-2593
30	6	Washer .....	9611-99-1887	9611-99-1887	9611-99-1887	9611-99-1887	9611-99-1887
31	1	Back plate (LKH-112 0-10 bar) .....	9612-3892-08	9612-3892-08	9612-3892-08	9612-3892-08	9612-3892-08
	1	Back plate (LKH-112/P 10-40 bar) .....	9612-3892-14	9612-3892-14	9612-3892-14	9612-3892-14	9612-3892-14
32Δ	2	O-ring, EPDM (standard) .....	9611-99-2744	9611-99-2744	9611-99-2744	9611-99-2744	9611-99-2744
	2	O-ring, NBR .....	9611-99-2745	9611-99-2745	9611-99-2745	9611-99-2745	9611-99-2745
	2	O-ring, FPM .....	9611-99-2746	9611-99-2746	9611-99-2746	9611-99-2746	9611-99-2746
35	1	Spacing ring .....	9612-3625-01	9612-3625-01	9612-3625-01	9612-3625-01	9612-3625-01
38	1	Rotating seal housing .....	9612-3624-01	9612-3624-01	9612-3624-01	9612-3624-01	9612-3624-01
40	1	Impeller .....	9612-3604-01	9612-3604-01	9612-3604-01	9612-3604-01	9612-3604-01
41Δ○	2	O-ring, EPDM (standard) .....	9611-99-2750	9611-99-2750	9611-99-2750	9611-99-2750	9611-99-2750
	2	O-ring, NBR .....	9611-99-2751	9611-99-2751	9611-99-2751	9611-99-2751	9611-99-2751
	2	O-ring, FPM .....	9611-99-2752	9611-99-2752	9611-99-2752	9611-99-2752	9611-99-2752
42	1	Pump casing, IDF .....	9612-3889-01	9612-3889-01	9612-3889-01	9612-3889-01	9612-3889-01
	1	Pump casing, SMS .....	9612-3889-02	9612-3889-02	9612-3889-02	9612-3889-02	9612-3889-02
	1	Pump casing, DIN .....	9612-3889-03	9612-3889-03	9612-3889-03	9612-3889-03	9612-3889-03
	1	Pump casing, ISO .....	9612-3889-04	9612-3889-04	9612-3889-04	9612-3889-04	9612-3889-04
	1	Pump casing, BS .....	9612-3889-05	9612-3889-05	9612-3889-05	9612-3889-05	9612-3889-05
	1	Pump casing, flange DN40 .....	9612-3894-01	9612-3894-01	9612-3894-01	9612-3894-01	9612-3894-01
43Δ○	1	O-ring, EPDM (standard) .....	9611-99-2747	9611-99-2747	9611-99-2747	9611-99-2747	9611-99-2747
	1	O-ring, NBR .....	9611-99-2748	9611-99-2748	9611-99-2748	9611-99-2748	9611-99-2748
	1	O-ring, FPM .....	9611-99-2749	9611-99-2749	9611-99-2749	9611-99-2749	9611-99-2749
44	1	Guide vanes .....	9612-3613-01	9612-3613-01	9612-3613-01	9612-3613-01	9612-3613-01
45	1	Impeller .....	9612-3605-01	9612-3605-01	9612-3605-01	9612-3605-01	9612-3605-01
47	1	Impeller screw .....	9612-3627-01	9612-3627-01	9612-3627-01	9612-3627-01	9612-3627-01
48	6	Bolt .....	9612-3635-01	9612-3635-01	9612-3635-01	9612-3635-01	9612-3635-01
49	1	Pump cover, IDF .....	9612-3893-01	9612-3893-01	9612-3893-01	9612-3893-01	9612-3893-01
	1	Pump cover, SMS .....	9612-3893-02	9612-3893-02	9612-3893-02	9612-3893-02	9612-3893-02
	1	Pump cover, DIN .....	9612-3893-03	9612-3893-03	9612-3893-03	9612-3893-03	9612-3893-03
	1	Pump cover, ISO .....	9612-3893-04	9612-3893-04	9612-3893-04	9612-3893-04	9612-3893-04
	1	Pump cover, BS .....	9612-3893-05	9612-3893-05	9612-3893-05	9612-3893-05	9612-3893-05
	1	Pump cover, flange DN50 .....	9612-3895-01	9612-3895-01	9612-3895-01	9612-3895-01	9612-3895-01
<b>Legs</b>							
50	4	Nut .....	9611-99-0360	9611-99-0353	9611-99-0353	9611-99-0353	9611-99-0587
51	4	Spring washer .....	9611-99-1888	9611-99-1887	9611-99-1887	9611-99-1887	9611-99-0676
52	4	Leg .....	9612-3967-01	9612-3967-01	9612-3967-01	9612-3967-01	9612-3967-01
53	4	Screw (Period 9711-) .....	9611-99-1126	9611-99-1126	9611-99-1126	9611-99-1126	9611-99-1126
	4	Screw (Period -9711) .....	9611-99-1907	9611-99-1907	9611-99-1907	9611-99-1907	9611-99-1907
54	1	Support bar, left .....	9612-1323-01	9612-1323-05	9612-1323-05	9612-1323-06	9612-1323-03
55	1	Support bar, right .....	9612-1322-01	9612-1322-05	9612-1322-05	9612-1322-06	9612-1322-03
56	4	Nut .....		9611-99-0587			
57	4	Washer .....		9611-99-0786	9611-99-0786	9611-99-0786	9611-99-0706
58	4	Screw .....	9611-99-3241	9611-99-1374	9611-99-1911	9611-99-1911	9611-99-1834



Pos.	Qty.	Denomination	2.2 kW	3 kW	4 kW	5.5kW	7.5 kW
1	1	Motor 220/240 VD .....	31801-1983-1	31801-1984-1	9612-4028-07	9612-4028-15	9612-4028-30
	1	Motor 380/420 VD .....	31801-1983-2	31801-1984-2	9612-4028-09	9612-4028-17	9612-4028-32
	1	*Special motor 220/240 VD .....	9612-4189-03		9612-4189-07	9612-4189-09	9612-4189-11
	1	*Special motor 380/420 VD .....	9612-4189-04		9612-4189-08	9612-4189-10	9612-4189-12
2	1	Shroud complete .....	9612-1390-01	9612-1390-02	9612-1390-03	9612-1390-08	9612-1390-08
3	1	Edge list (Included in pos. 2) .....	9612-1338-01	9612-1338-02	9612-1338-03	9612-1338-04	9612-1338-04

\* For system pressure 10-40 bar.

Pos.	Qty.	Denomination	11kW	15 kW	18.5 kW
1	1	Motor 220/240 VD .....	31801-0122-1	31801-1194-1	9712-3454-13
	1	Motor 380/420 VD .....	31801-0122-3	31801-1194-3	9612-3454-14
	1	*Special motor 220/240 VD .....	9612-4189-13	9612-4189-15	9612-4189-17
	1	*Special motor 380/420 VD .....	9612-4189-14	9612-4189-16	9612-4189-18
2	1	Shroud complete .....	9612-1390-05	9612-1390-05	9612-1390-05
3	1	Edge list (Included in pos. 2) .....	9612-1338-05	9612-1338-05	9612-1338-05

\* For system pressure 10-40 bar.

**Service kit for single shaft seal**

Δ	Service kit, EPDM.....	9611-92-2096
Δ	Service kit, NBR.....	9611-92-2097
Δ	Service kit, FPM.....	9611-92-2098

**Service kit for flused shaft seal**

○	Service kit, EPDM.	9611-92-2099
○	Service kit, NBR.	9611-92-2100
○	Service kit, FPM.	9611-92-2101

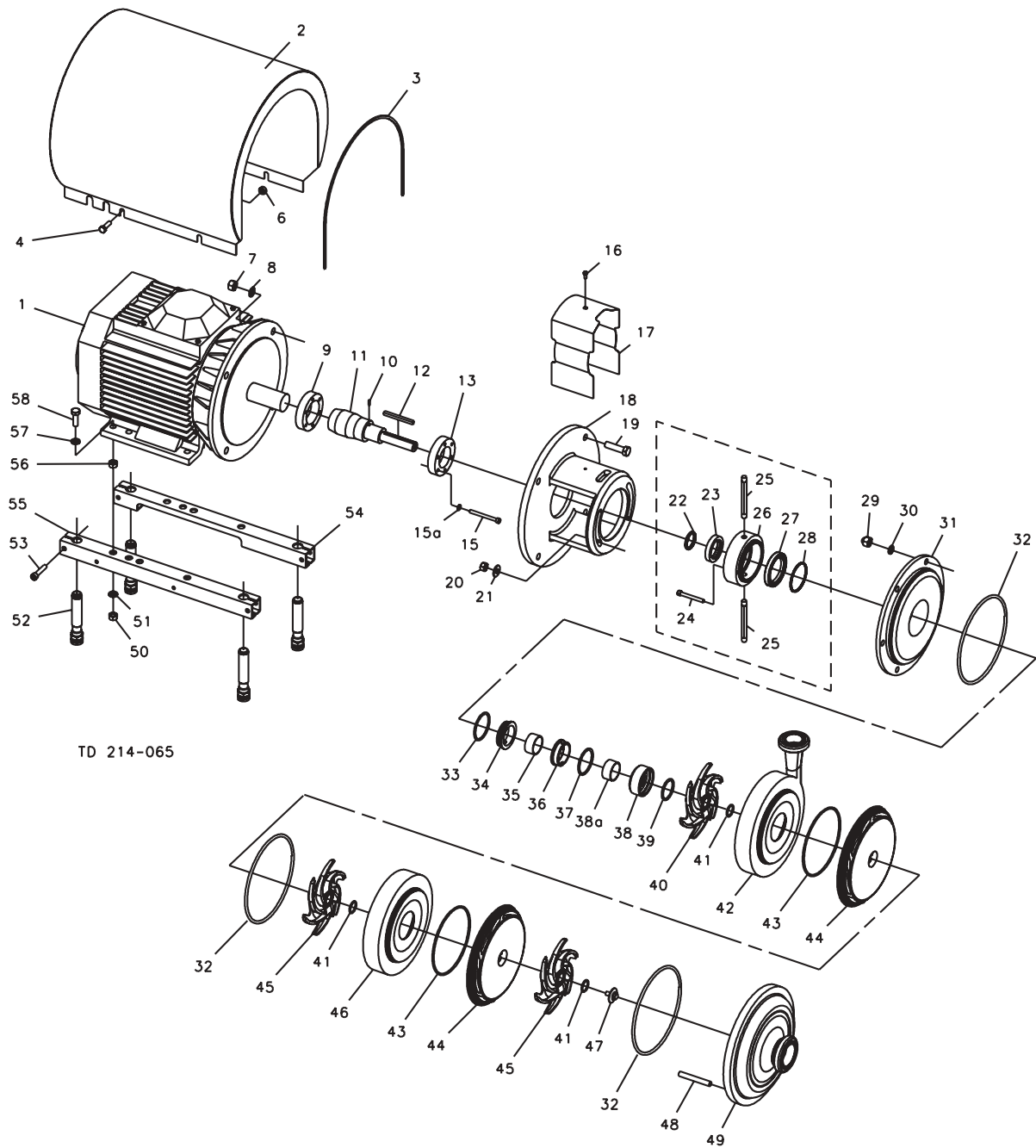
Parts marked with Δ/○ are included in the service kits.

**Conversion kit single to flushed shaft seal**

9611-92-2138 = Pos. 22+23+24+25+26+27+28

Recommended Spare Parts: Service kits.

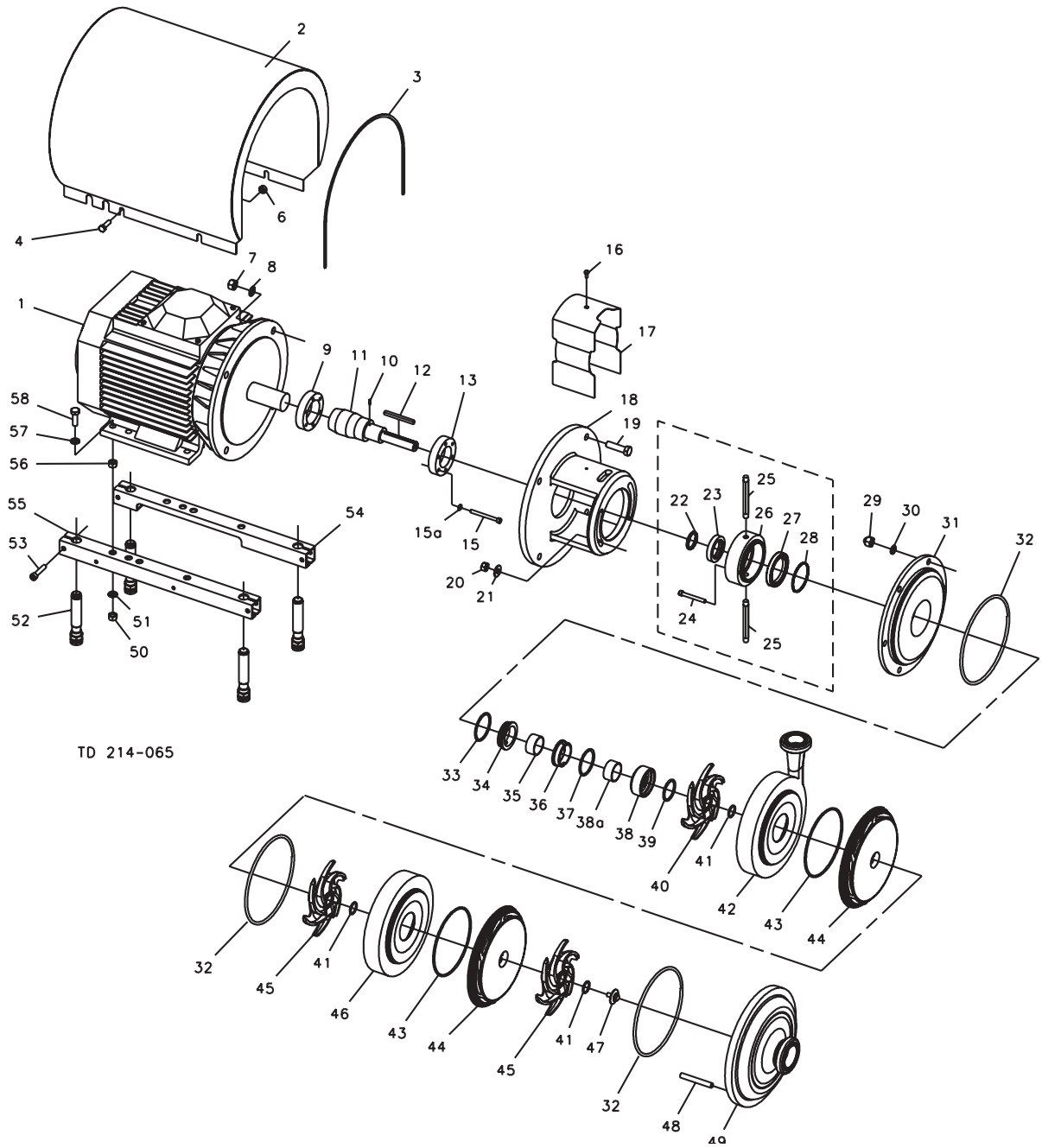
900022/0



TD 214-065

Pos.	Qty.	Denomination	3 kW	4 kW	5.5-7.5 kW	11-18.5 kW
4	4	Screw .....	9611-99-3240	9611-99-3240	9611-99-3240	9611-99-3241
6	4	Spacing sleeve .....			9611-99-2737	31438-0390-2
7	4	Nut for adaptor .....	9611-99-0587	9611-99-0587	9611-99-0587	9611-99-2160
8	4	Washer for adaptor .....	9611-99-0676	9611-99-0676	9611-99-0676	9611-99-1886
9	1	Compression ring with thread .....	9612-1336-02	9612-1336-02	9612-1336-05	9612-1336-03
10	1	Connex pin .....	9611-99-0622	9611-99-0622	9611-99-0622	9611-99-0622
11	1	Shaft .....	9612-3619-02	9612-3619-02	9612-3620-02	9612-3621-02
	1	Shaft with pin (pos.10) .....	9612-3619-04	9612-3619-04	9612-3620-05	9612-3621-05
12	1	Key .....	9611-99-2757	9611-99-2757	9611-99-2757	9611-99-2757
13	1	Compression ring without thread .....	9612-1337-02	9612-1337-02	9612-1337-05	9612-1337-03
15	6	Screw .....	9611-99-3196	9611-99-3196	9611-99-3197	9611-99-3198
15a	6	Washer .....	9611-99-3199	9611-99-3199	9611-99-3199	9611-99-3199
16	1	Screw for adaptor guard .....	9611-99-3239	9611-99-3239	9611-99-3239	9611-99-3239
17	1	Adaptor guard .....	9612-1311-06	9612-1311-06	9612-1311-07	9612-1311-08
18	1	Adaptor .....	9612-3424-01	9612-3424-01	9612-3425-01	9612-3426-01
19	4	Screw for adaptor .....	9611-99-1834	9611-99-1834	9611-99-2162	9611-99-2163
20	2	Nut .....	9611-99-0353	9611-99-0353	9611-99-0353	9611-99-0353
21	2	Washer .....	9611-99-2559	9611-99-2559	9611-99-2559	9611-99-2559
29	6	Cap nut .....	9611-99-2593	9611-99-2593	9611-99-2593	9611-99-2593
30	6	Washer .....	9611-99-1887	9611-99-1887	9611-99-1887	9611-99-1887
31	1	Back plate (LKH-113 0-10 bar) .....	9612-3892-08	9612-3892-08	9612-3892-08	9612-3892-08
	1	Back plate (LKH-113/P 10-40 bar) .....	9612-3892-14	9612-3892-14	9612-3892-14	9612-3892-14
32Δ○	3	O-ring, EPDM (standard) .....	9611-99-2744	9611-99-2744	9611-99-2744	9611-99-2744
	3	O-ring, NBR .....	9611-99-2745	9611-99-2745	9611-99-2745	9611-99-2745
	3	O-ring, FPM .....	9611-99-2746	9611-99-2746	9611-99-2746	9611-99-2746
35	1	Spacing ring .....	9612-3625-01	9612-3625-01	9612-3625-01	9612-3625-01
38	1	Rotating seal housing .....	9612-3624-01	9612-3624-01	9612-3624-01	9612-3624-01
40	1	Impeller .....	9612-3604-01	9612-3604-01	9612-3604-01	9612-3604-01
41Δ○	3	O-ring, EPDM (standard) .....	9611-99-2750	9611-99-2750	9611-99-2750	9611-99-2750
	3	O-ring, NBR .....	9611-99-2751	9611-99-2751	9611-99-2751	9611-99-2751
	3	O-ring, FPM .....	9611-99-2752	9611-99-2752	9611-99-2752	9611-99-2752
42	1	Pump casing, IDF .....	9612-3889-01	9612-3889-01	9612-3889-01	9612-3889-01
	1	Pump casing, SMS .....	9612-3889-02	9612-3889-02	9612-3889-02	9612-3889-02
	1	Pump casing, DIN .....	9612-3889-03	9612-3889-03	9612-3889-03	9612-3889-03
	1	Pump casing, ISO .....	9612-3889-04	9612-3889-04	9612-3889-04	9612-3889-04
	1	Pump casing, BS .....	9612-3889-05	9612-3889-05	9612-3889-05	9612-3889-05
	1	Pump casing, flange DN40 .....	9612-3894-01	9612-3894-01	9612-3894-01	9612-3894-01
43Δ○	2	O-ring, EPDM (standard) .....	9611-99-2747	9611-99-2747	9611-99-2747	9611-99-2747
	2	O-ring, NBR .....	9611-99-2748	9611-99-2748	9611-99-2748	9611-99-2748
	2	O-ring, FPM .....	9611-99-2749	9611-99-2749	9611-99-2749	9611-99-2749
44	2	Guide vanes .....	9612-3613-01	9612-3613-01	9612-3613-01	9612-3613-01
45	2	Impeller .....	9612-3605-01	9612-3605-01	9612-3605-01	9612-3605-01
46	1	Intermediate casing .....	9612-3610-01	9612-3610-01	9612-3610-01	9612-3610-01
47	1	Impeller screw .....	9612-3627-01	9612-3627-01	9612-3627-01	9612-3627-01
48	6	Bolt .....	9612-3635-02	9612-3635-02	9612-3635-02	9612-3635-02
49	1	Pump cover, IDF .....	9612-3893-01	9612-3893-01	9612-3893-01	9612-3893-01
	1	Pump cover, SMS .....	9612-3893-02	9612-3893-02	9612-3893-02	9612-3893-02
	1	Pump cover, DIN .....	9612-3893-03	9612-3893-03	9612-3893-03	9612-3893-03
	1	Pump cover, ISO .....	9612-3893-04	9612-3893-04	9612-3893-04	9612-3893-04
	1	Pump cover, BS .....	9612-3893-05	9612-3893-05	9612-3893-05	9612-3893-05
	1	Pump cover, flange DN50 .....	9612-3895-01	9612-3895-01	9612-3895-01	9612-3895-01
<b>Legs</b>						
50	4	Nut .....	9611-99-0353	9611-99-0353	9611-99-0353	9611-99-0587
51	4	Spring washer .....	9611-99-1887	9611-99-1887	9611-99-1887	9611-99-0676
52	4	Leg .....	9612-3967-01	9612-3967-01	9612-3967-01	9612-3967-01
53	4	Screw (Period 9711-) .....	9611-99-1126	9611-99-1126	9611-99-1126	9611-99-1126
	4	Screw (Period -9711) .....	9611-99-1907	9611-99-1907	9611-99-1907	9611-99-1907
54	1	Support bar, left .....	9612-1323-05	9612-1323-05	9612-1323-06	9612-1323-03
55	1	Support bar, right .....	9612-1322-05	9612-1322-05	9612-1322-06	9612-1322-03
56	4	Nut .....	9611-99-0587			
57	4	Washer .....	9611-99-0786	9611-99-0786	9611-99-0786	9611-99-0706
58	4	Screw .....	9611-99-1374	9611-99-1911	9611-99-1911	9611-99-1834

(Same drawing as on page 6)



TD 214-065



Pos.	Qty.	Denomination	3 kW	4 kW	5.5 kW	7.5 kW
1	1	Motor 220/240 VD .....	31801-1984-1	9612-4028-07	9612-4028-15	9612-4028-30
	1	Motor 380/420 VD .....	31801-1984-2	9612-4028-09	9612-4028-17	9612-4028-32
	1	*Special motor 220/240 VD .....		9612-4189-07	9612-4189-09	9612-4189-11
	1	*Special motor 380/420 VD .....		9612-4189-08	9612-4189-10	9612-4189-12
2	1	Shroud complete .....	9612-1390-02	9612-1390-03	9612-1390-08	9612-1390-08
3	1	Edge list (Included in pos. 2) .....	9612-1338-02	9612-1338-03	9612-1338-04	9612-1338-04

\* For system pressure 10-40 bar.

Pos.	Qty.	Denomination	11 kW	15 kW	18.5 kW
1	1	Motor 220/240 VD .....	31801-0122-1	31801-1194-1	9612-3454-13
	1	Motor 380/420 VD .....	31801-0122-3	31801-1194-3	9612-3454-14
	1	*Special motor 220/240 VD .....	9612-4189-13	9612-4189-15	9612-4189-17
	1	*Special motor 380/420 VD .....	9612-4189-14	9612-4189-16	9612-4189-18
2	1	Shroud complete .....	9612-1390-05	9612-1390-05	9612-1390-05
3	1	Edge list (Included in pos. 2) .....	9612-1338-05	9612-1338-05	9612-1338-05

\* For system pressure 10-40 bar.

**Service kit for single shaft seal**

- Δ Service kit, EPDM.....9611-92-2102
- Δ Service kit, NBR.....9611-92-2103
- Δ Service kit, FPM.....9611-92-2104

**Service kit for flushed shaft seal**

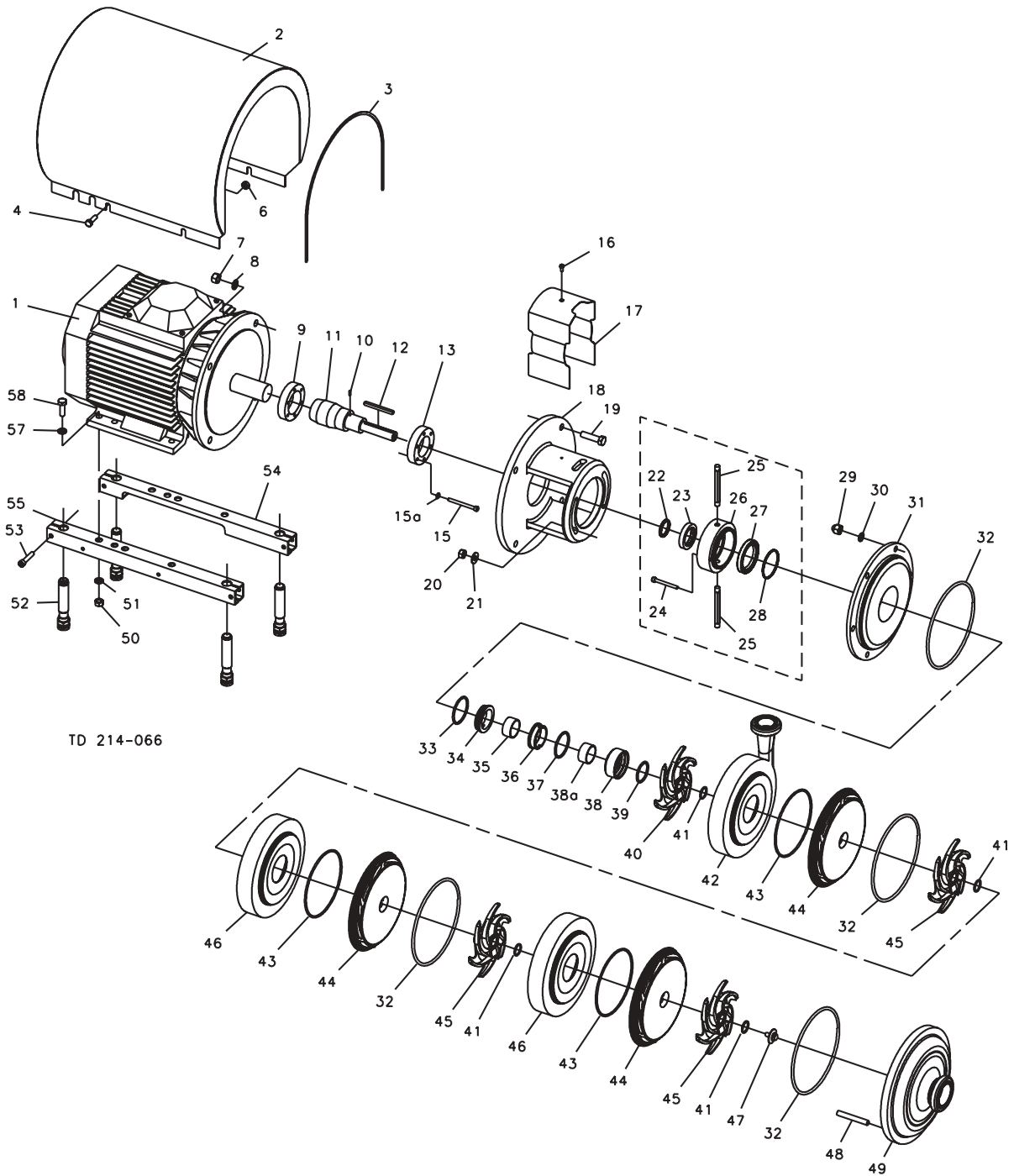
- Service kit, EPDM.....9611-92-2105
- Service kit, NBR.....9611-92-2106
- Service kit, FPM.....9611-92-2107

Parts marked with Δ/○ are included in the service kits.

**Conversion kit single to flushed shaftseal 9611-92-2138 = Pos. 22+23+24+25+26+27+28**

Recommended Spare Parts: Service kits.

900023/0



TD 214-066

Pos.	Qty.	Denomination	5.5-7.5 kW	11-18.5 kW			
4	4	Screw .....	9611-99-3240	9611-99-3241			
6	4	Spacing sleeve .....	9611-99-2737	31438-0390-2			
7	4	Nut for adaptor .....	9611-99-0587	9611-99-2160			
8	4	Washer for adaptor .....	9611-99-0676	9611-99-1886			
9	1	Compression ring with thread .....	9612-1336-05	9612-1336-03			
10	1	Connex pin for flushed shaft seal .....	9611-99-0622	9611-99-0622			
11	1	Shaft for single shaft seal .....	9612-3620-03	9612-3621-03			
	1	Shaft with pin (pos.10) for flushed shaft seal .....	9612-3620-06	9612-3621-06			
12	1	Key .....	9611-99-2758	9611-99-2758			
13	1	Compression ring without thread .....	9612-1337-05	9612-1337-03			
15	6	Screw .....	9611-99-3197	9611-99-3198			
15a	6	Washer .....	9611-99-3199	9611-99-3199			
16	1	Screw for adaptor guard .....	9611-99-3239	9611-99-3239			
17	1	Adaptor guard .....	9612-1311-07	9612-1311-08			
18	1	Adaptor .....	9612-3425-01	9612-3426-01			
19	4	Screw for adaptor .....	9611-99-2162	9611-99-2163			
20	2	Nut .....	9611-99-0353	9611-99-0353			
21	2	Washer .....	9611-99-2559	9611-99-2559			
29	6	Cap nut .....	9611-99-2593	9611-99-2593			
30	6	Washer .....	9611-99-1887	9611-99-1887			
31	1	Back plate (LKH-114 0-10 bar) .....	9612-3892-08	9612-3892-08			
	1	Back plate (LKH-114/P 10-40 bar) .....	9612-3892-14	9612-3892-14			
32ΔO	4	O-ring, EPDM (standard) .....	9611-99-2744	9611-99-2744			
	4	O-ring, NBR .....	9611-99-2745	9611-99-2745			
	4	O-ring, FPM .....	9611-99-2746	9611-99-2746			
35	1	Spacing ring .....	9612-3625-01	9612-3625-01			
38	1	Rotating seal housing .....	9612-3624-01	9612-3624-01			
40	1	Impeller .....	9612-3604-01	9612-3604-01			
41ΔO	4	O-ring, EPDM (standard) .....	9611-99-2750	9611-99-2750			
	4	O-ring, NBR .....	9611-99-2751	9611-99-2751			
	4	O-ring, FPM .....	9611-99-2752	9611-99-2752			
42	1	Pump casing, IDF .....	9612-3889-01	9612-3889-01			
	1	Pump casing, SMS .....	9612-3889-02	9612-3889-02			
	1	Pump casing, DIN .....	9612-3889-03	9612-3889-03			
	1	Pump casing, ISO .....	9612-3889-04	9612-3889-04			
	1	Pump casing, BS .....	9612-3889-05	9612-3889-05			
	1	Pump casing, flange DN40 .....	9612-3894-01	9612-3894-01			
43ΔO	3	O-ring, EPDM (standard) .....	9611-99-2747	9611-99-2747			
	3	O-ring, NBR .....	9611-99-2748	9611-99-2748			
	3	O-ring, FPM .....	9611-99-2749	9611-99-2749			
44	3	Guide vanes .....	9612-3613-01	9612-3613-01			
45	3	Impeller .....	9612-3605-01	9612-3605-01			
46	2	Intermediate casing .....	9612-3610-01	9612-3610-01			
47	1	Impeller screw .....	9612-3627-01	9612-3627-01			
48	6	Bolt .....	9612-3635-03	9612-3635-03			
49	1	Pump cover, IDF .....	9612-3893-01	9612-3893-01			
	1	Pump cover, SMS .....	9612-3893-02	9612-3893-02			
	1	Pump cover, DIN .....	9612-3893-03	9612-3893-03			
	1	Pump cover, ISO .....	9612-3893-04	9612-3893-04			
	1	Pump cover, BS .....	9612-3893-05	9612-3893-05			
	1	Pump cover, flange DN50 .....	9612-3895-01	9612-3895-01			
<b>Legs</b>							
50	4	Nut .....	9611-99-0353	9611-99-0587			
51	4	Spring washer .....	9611-99-1887	9611-99-0676			
52	4	Leg .....	9612-3967-01	9612-3967-01			
53	4	Screw (Period 9711-) .....	9611-99-1126	9611-99-1126			
	4	Screw (Period -9711) .....	9611-99-1907	9611-99-1907			
54	1	Support bar, left .....	9612-1323-06	9612-1323-03			
55	1	Support bar, right .....	9612-1322-06	9612-1322-03			
57	4	Washer .....	9611-99-0786	9611-99-0706			
58	4	Screw .....	9611-99-1911	9611-99-1834			
Pos.	Qty.	Denomination	5.5 kW	7.5 kW	11 kW	15 kW	18.5 kW
1	1	Motor 220/240 VΔ .....	9612-4028-15	9612-4028-30	31801-0122-1	31801-1194-1	9612-3454-13
	1	Motor 380/420 VΔ .....	9612-4028-17	9612-4028-32	31801-0122-3	31801-1194-3	9612-3454-14
	1	*Special motor 220/240 VΔ .....	9612-4189-09	9612-4189-11	9612-4189-13	9612-4189-15	9612-4189-17
	1	*Special motor 380/420 VΔ .....	9612-4189-10	9612-4189-12	9612-4189-14	9612-4189-16	9612-4189-18
2	1	Shroud complete .....	9612-1390-08	9612-1390-08	9612-1390-05	9612-1390-05	9612-1390-05
3	1	Edge list (Included in pos. 2) .....	9612-1338-04	9612-1338-04	9612-1338-05	9612-1338-05	9612-1338-05

\* For system pressure 10-40 bar.

Recommended Spare Parts: **Service kits.**

Service kit for single shaft seal

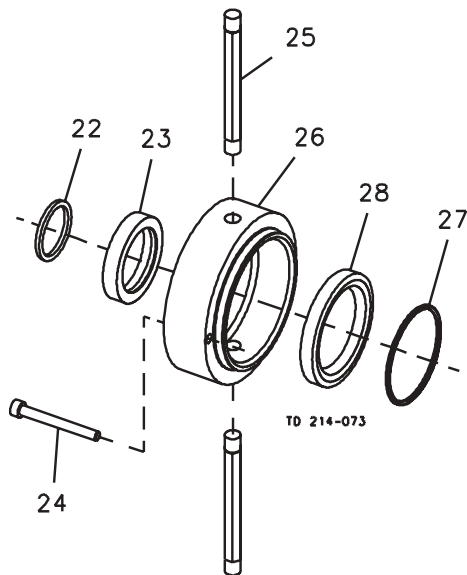
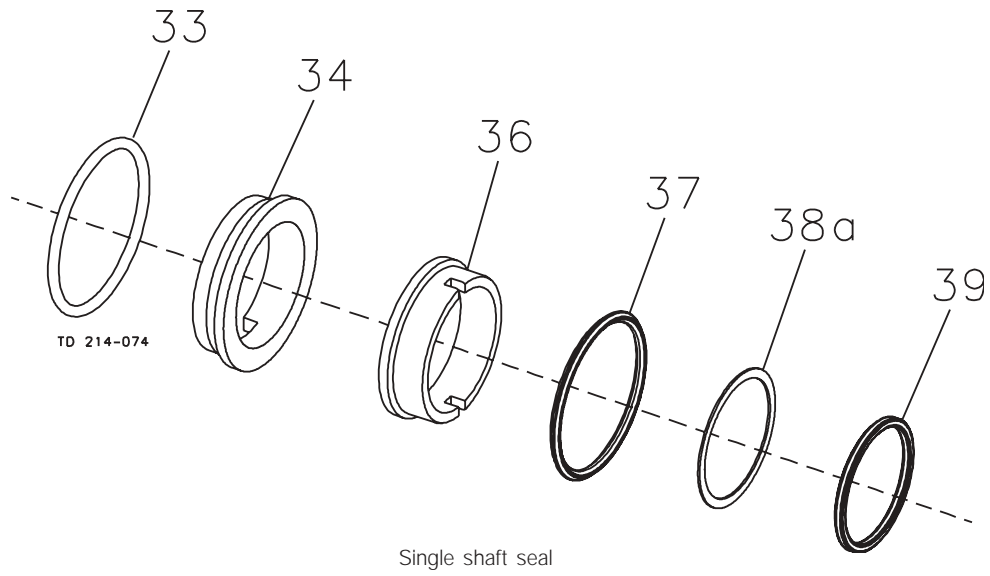
- Δ Service kit, EPDM .....
- Δ Service kit, NBR .....
- Δ Service kit, FPM .....

Service kit for flushed shaft seal

- O Service kit, EPDM....
- O Service kit, NBR.....
- O Service kit, FPM.....

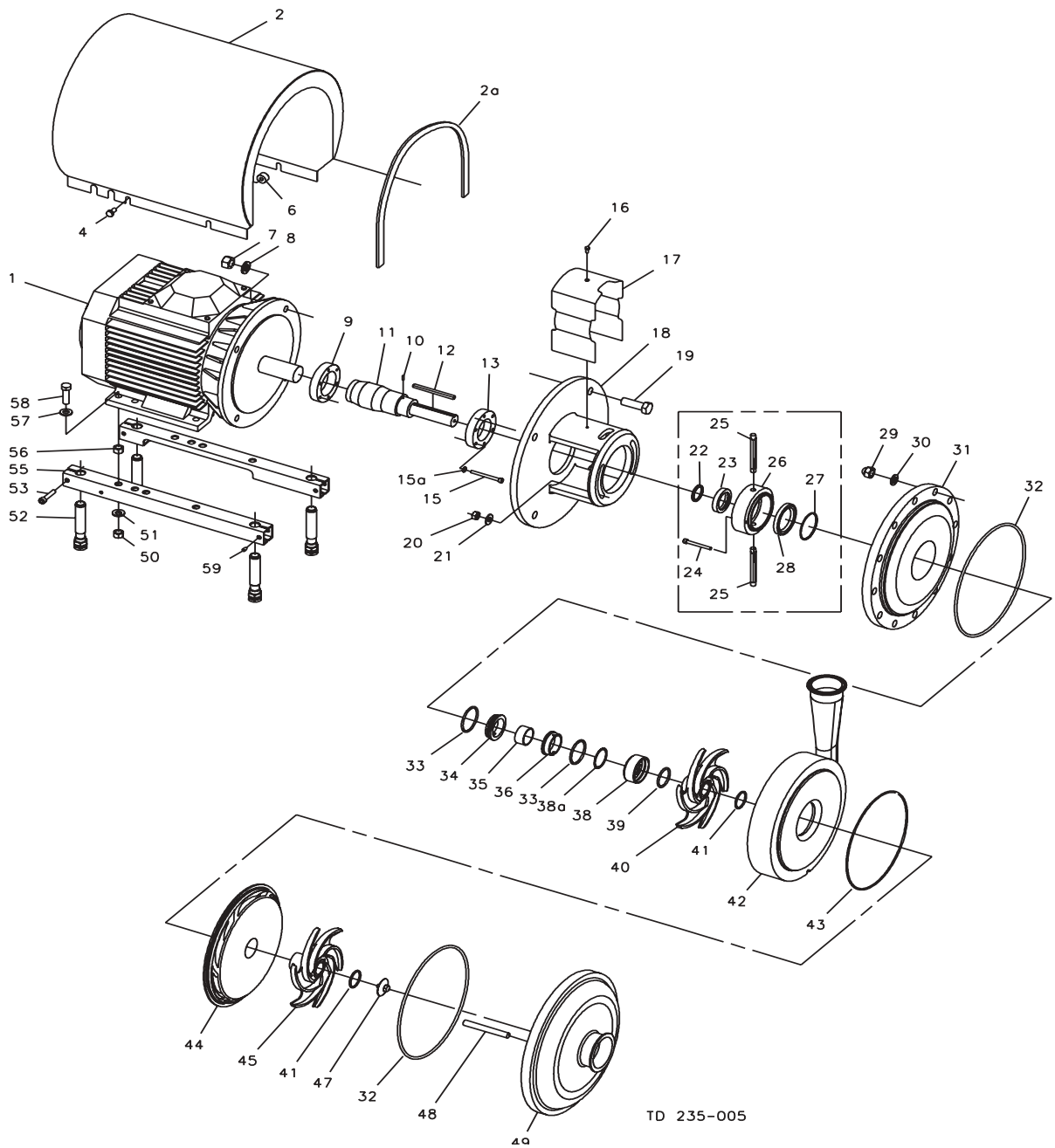
Parts marked with Δ/O are incl. in the service kits.

Conversion kit single to flushed shaft seal  
**9611-92-2138 = Pos. 22+23+24+25+26+27+28**



Pos.	Qty.	Denomination	5.5-18.5 kW	Pos.	Qty.	Denomination	5.5-18.5 kW
<b>Parts for flushed shaft seal</b>				<b>Alternatives</b>			
22	1	O-ring, EPDM .....	9611-99-2754	<b>Shaft seal complete EPDM (standard).... 9612-3622-04</b>			
23	1	Sleeve .....	9612-3629-01	33	1	O-ring, EPDM .....	9611-99-2727
24	2	Screw .....	9611-99-0203	34	1	Stationary seal ring, Sic.....	9612-3633-01
25	2	Tube .....	9612-3589-01	36	1	Rotating seal ring, Sic. ....	9612-3634-02
26	1	Seal housing for flushed seal .....	9612-3626-01	37	1	Quad ring, EPDM .....	9611-99-2730
27	1	O-ring, EPDM .....	9611-99-2753	38a	1	Support ring, PTFE .....	9612-4571-01
28	1	Lip seal .....	9611-99-2860	39	1	Quad ring, EPDM .....	9611-99-2733
 				<b>Shaft seal complete NBR ..... 9612-3622-05</b>			
<b>ΔO</b>	<b>Shaft seal complete EPDM (standard) 9612-3622-01</b>			33	1	O-ring, NBR .....	9611-99-2728
33	1	O-ring, EPDM .....	9611-99-2727	34	1	Stationary seal ring, Sic.....	9612-3633-01
34	1	Stationary seal ring, Sic.....	9612-3633-01	36	1	Rotating seal ring, Sic. ....	9612-3634-02
36	1	Rotating seal ring, Carbon .....	9612-3634-01	37	1	Quad ring, NBR .....	9611-99-2731
37	1	Quad ring, EPDM .....	9611-99-2730	38a	1	Support ring, PTFE .....	9612-4571-01
38a	1	Support ring, PTFE .....	9612-4571-01	39	1	Quad ring, NBR .....	9611-99-2734
39	1	Quad ring, EPDM .....	9611-99-2733	<b>Shaft seal complete FPM ..... 9612-3622-06</b>			
<b>ΔO</b>	<b>Shaft seal complete NBR ..... 9612-3622-02</b>			33	1	O-ring, FPM .....	9611-99-2729
33	1	O-ring, NBR .....	9611-99-2728	34	1	Stationary seal ring, Sic.....	9612-3633-01
34	1	Stationary seal ring, Sic.....	9612-3633-01	36	1	Rotating seal ring, Sic. ....	9612-3634-02
36	1	Rotating seal ring, Carbon .....	9612-3634-01	37	1	Quad ring, FPM .....	9611-99-2732
37	1	Quad ring, NBR .....	9611-99-2731	38a	1	Support ring, PTFE .....	9612-4571-01
38a	1	Support ring, PTFE .....	9612-4571-01	39	1	Quad ring, FPM .....	9611-99-2735
39	1	Quad ring, NBR .....	9611-99-2734	<b>Shaft seal complete FPM ..... 9612-3622-03</b>			
<b>ΔO</b>	<b>Shaft seal complete FPM ..... 9612-3622-03</b>			33	1	O-ring, FPM .....	9611-99-2729
33	1	O-ring, FPM .....	9611-99-2729	34	1	Stationary seal ring, Sic.....	9612-3633-01
34	1	Stationary seal ring, Sic.....	9612-3633-01	36	1	Rotating seal ring, Carbon .....	9612-3634-01
36	1	Rotating seal ring, Carbon .....	9612-3634-01	37	1	Quad ring, FPM .....	9611-99-2732
37	1	Quad ring, FPM .....	9611-99-2732	38a	1	Support ring, PTFE .....	9612-4571-01
38a	1	Support ring, PTFE .....	9612-4571-01	39	1	Quad ring, FPM .....	9611-99-2735
39	1	Quad ring, FPM .....	9611-99-2735				

900200/0



Pos.	Qty.	Denomination	30-45 kW
4	4	Screw .....	9611-99-3243
6	4	Distance sleeve .....	31438-0390-3
7	4	Nut for adaptor .....	9611-99-2160
8	4	Washer for adaptor .....	9611-99-1886
9	1	Compression ring with thread .....	9612-1336-07
10	1	Connex pin .....	9611-99-0622
11	1	Shaft and pin (pos 10) .....	9612-5921-01
12	1	Key .....	9611-99-3476
13	1	Compression ring without thread .....	9612-1337-07
15	6	Screw .....	9611-99-3198
15a	6	Washer .....	9611-99-3199
16	1	Screw for safety guard .....	9611-99-3239
17	1	Safety guard .....	9612-1311-08
18	1	Adaptor .....	9612-3427-01
19	4	Screw for adaptor .....	9611-99-2164
20	4	Nut .....	9611-99-0353
21	4	Washer .....	9611-99-2559
29	11	Cap nut .....	9611-99-3685
30	11	Washer .....	9611-99-3684
31	1	Back plate .....	9612-3892-24
32◆○	2	O-ring, EPDM (standard) .....	9611-99-3574
	2	O-ring, NBR .....	9611-99-3575
	2	O-ring, FPM .....	9611-99-3576
35	1	Spacing ring .....	9612-3625-03
38	1	Rotating seal housing .....	9612-6045-01
40	1	Impeller LKH-120P .....	9612-5906-04
41◆○	2	O-ring, EPDM (standard) .....	9611-99-3578
	2	O-ring, NBR .....	9611-99-3579
	2	O-ring, FPM .....	9611-99-3580
42	1	Pump casing, flange .....	9612-5923-01
	1	Pump casing, clamp .....	9612-5923-02
43◆○	1	O-ring, EPDM (standard) .....	9611-99-3582
	1	O-ring, NBR .....	9611-99-3583
	1	O-ring, FPM .....	9611-99-3584
44	1	Guide vanes .....	9612-5903-02
45	1	Impeller LKH-120P .....	9612-5906-03
47	1	Impeller screw .....	9612-5913-04
	1	Impeller screw (period -0211) .....	9612-5913-01
48	11	Bolt .....	9612-3635-06
49	1	Pump cover, flange .....	9612-5924-01
	1	Pump cover, clamp .....	9612-5924-02
<b>Legs</b>			
50	4	Nut .....	9611-99-0587
51	4	Spring washer .....	9611-99-0676
52	4	Leg .....	9612-3967-01
53	4	Screw .....	9611-99-1907
54	1	Support bar, left .....	9612-3422-01
55	1	Support bar, right .....	9612-3422-01
57	4	Washer .....	9611-99-0706
58	4	Screw .....	9611-99-3680
59	4	Pivot screw .....	9611-99-1763

Parts marked with ◆○ are included in the service kits.

Pos.	Qty.	Denomination	30kW	37kW	45kW
1	1	Special Motor <sup>1)</sup> .....	9612-6055-20	9612-6055-22	9612-6055-24
		Special Motor <sup>2)</sup> .....	9612-6055-19	9612-6055-21	9612-6055-23
2	1	Shroud complete .....	9612-5938-01	9612-5938-01	9612-5938-01
2a	1	Edge list (included in pos. 2)			

<sup>1)</sup> 3~, 50Hz, 380-420VD/660-690VY - Standard  
 3~, 50Hz, 220-240VD/380-420VY - Option

<sup>2)</sup> 3~, 60Hz, 440-480VD - Standard  
 3~, 60Hz, 250-280VD/440-480VY - Option

**Tool**

63	Tool .....	9612-9278-01
----	------------	--------------

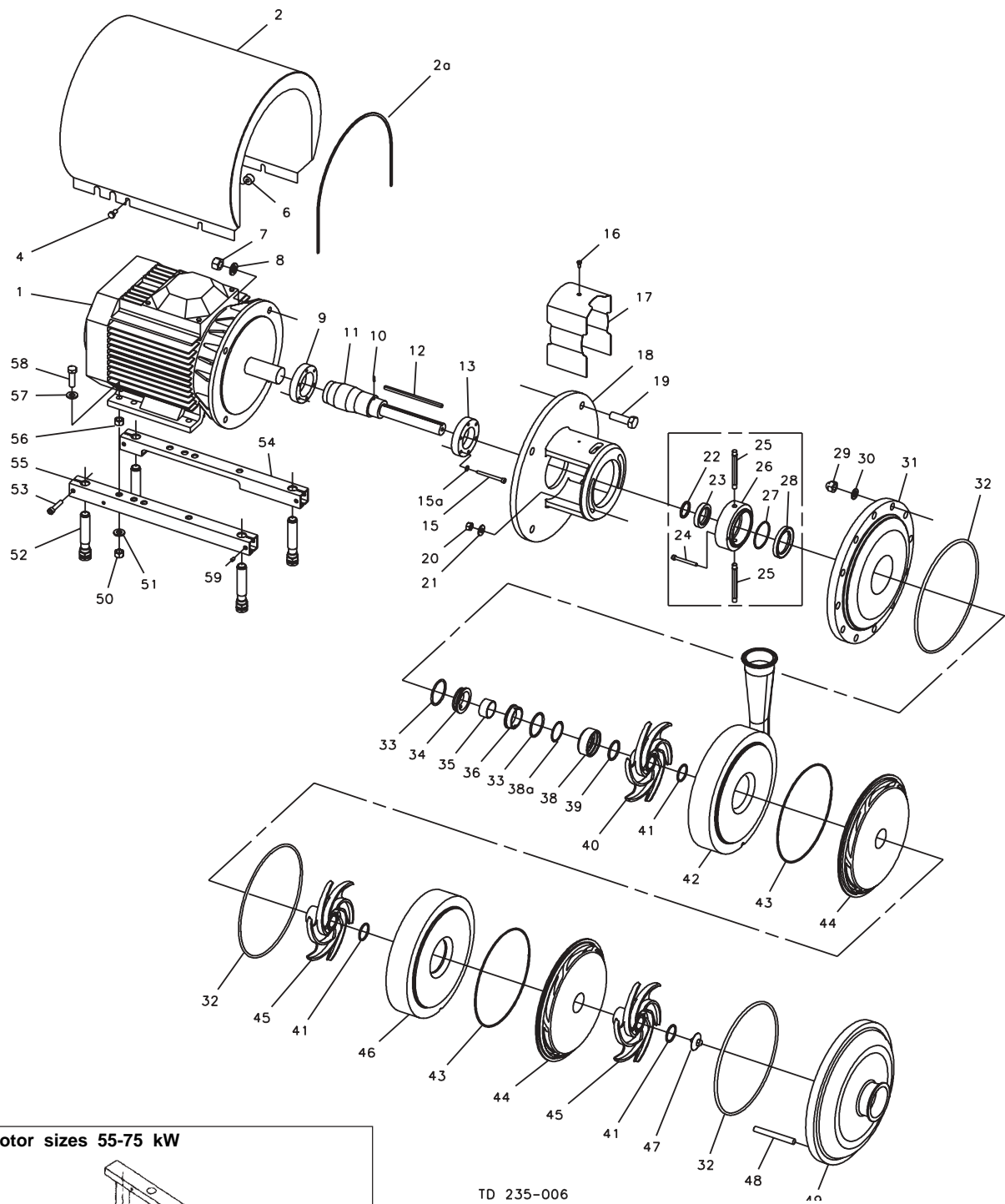
**Service kit for single shaft seal**

- ◆ Service kit, EPDM .....
- ◆ Service kit, NBR .....
- ◆ Service kit, FPM .....

**Service kit for flushed shaft seal**

- Service kit, EPDM .....
- Service kit, NBR .....
- Service kit, FPM .....

Conversion kit single to flushed shaft seal  
 9611-92-2415 = Pos. 22+23+24+25+26+27+28  
**Recommended Spare Parts: Service kits**





Pos.	Qty.	Denomination	30-45 kW	55-75 kW
4	4	Screw .....	9611-99-3243	9611-99-3243
6	4	Distance sleeve .....	31438-0390-3	
7	4	Nut for adaptor .....	9611-99-2160	9611-99-2160
8	4	Washer for adaptor .....	9611-99-1886	9611-99-1886
9	1	Compression ring with thread .....	9612-1336-07	9612-1336-08
10	1	Connex pin .....	9611-99-0622	9611-99-0622
11	1	Shaft and pin (pos 10) .....	9612-5921-02	9612-5922-02
12	1	Key .....	9611-99-2758	9611-99-2758
13	1	Compression ring without thread .....	9612-1337-07	9612-1337-08
15	6	Screw .....	9611-99-3198	9611-99-3266
15a	6	Washer .....	9611-99-3199	9611-99-3199
16	1	Screw for safety guard .....	9611-99-3239	9611-99-3239
17	1	Safety guard .....	9612-1311-08	9612-5912-02
18	1	Adaptor .....	9612-3427-01	9612-5915-01
19	4	Screw for adaptor .....	9611-99-2164	9611-99-2200
20	4	Nut .....	9611-99-0353	9611-99-0353
21	4	Washer .....	9611-99-2559	9611-99-2559
29	11	Cap nut .....	9611-99-3685	9611-99-3685
30	11	Washer .....	9611-99-3684	9611-99-3684
31	1	Back plate .....	9612-3892-24	9612-3892-24
32◆○	3	O-ring, EPDM (standard) .....	9611-99-3574	9611-99-3574
	3	O-ring, NBR .....	9611-99-3575	9611-99-3575
	3	O-ring, FPM .....	9611-99-3576	9611-99-3576
35	1	Spacing ring .....	9612-3625-03	9612-3625-03
38	1	Rotating seal housing .....	9612-6045-01	9612-6045-01
40	1	Impeller LKH-120P .....	9612-5906-04	9612-5906-04
41◆○	3	O-ring, EPDM (standard) .....	9611-99-3578	9611-99-3578
	3	O-ring, NBR .....	9611-99-3579	9611-99-3579
	3	O-ring, FPM .....	9611-99-3580	9611-99-3580
42	1	Pump casing, flange .....	9612-5923-01	9612-5923-01
	1	Pump casing, clamp .....	9612-5923-02	9612-5923-02
43◆○	2	O-ring, EPDM (standard) .....	9611-99-3582	9611-99-3582
	2	O-ring, NBR .....	9611-99-3583	9611-99-3583
	2	O-ring, FPM .....	9611-99-3584	9611-99-3584
44	2	Guide vanes .....	9612-5903-02	9612-5903-02
45	2	Impeller LKH-120P .....	9612-5906-03	9612-5906-03
46	1	Intermediate casing .....	9612-5909-02	9612-5909-02
47	1	Impeller screw .....	9612-5913-04	9612-5913-04
	1	Impeller screw (Period -0211) .....	9612-5913-01	9612-5913-01
<b>Legs</b>				
50	4	Nut .....	9611-99-0587	9611-99-0935
51	4	Spring washer .....	9611-99-0676	9611-99-3267
52	4	Leg .....	9612-3967-01	
53	4	Screw .....	9611-99-1907	
54	1	Support bar, left .....	9612-3422-01	
55	1	Support bar, right .....	9612-3422-01	
57	4	Washer .....	9611-99-0706	9611-99-3269
58	4	Screw .....	9611-99-3680	9611-99-3268
59	4	Pivot screw .....		9611-99-1763
60	2	Leg bracket .....		9612-5184-01
61	4	Nut for leg .....		9611-99-3260
62	4	Screw for leg .....		9612-5185-01

Parts marked with ◆○ are included in the service kits.

Pos.	Qty.	Denomination	30kW	37kW	45kW	55kW	75kW
1	1	Special Motor <sup>1)</sup> .....	9612-6055-20	9612-6055-22	9612-6055-24	9612-6055-26	9612-6055-28
		Special Motor <sup>2)</sup> .....	9612-6055-19	9612-6055-21	9612-6055-23	9612-6055-25	9612-6055-27
2	1	Shroud complete .....	9612-5938-01	9612-5938-01	9612-5938-01	9612-5938-04	9612-5938-04
2a	1	Edge list (included in pos. 2)					

<sup>1)</sup>3-,50Hz, 380-420VD/660-690VY -Standard  
3-,60Hz, 440-480VD -Standard

<sup>2)</sup>3-,50Hz, 220-240VD/380-420VY -Option  
3-,60Hz, 250-280VD/440-480VY -Option

**Tool**

63	Tool .....	9612-9278-01
----	------------	--------------

**Service kit for single shaft seal**

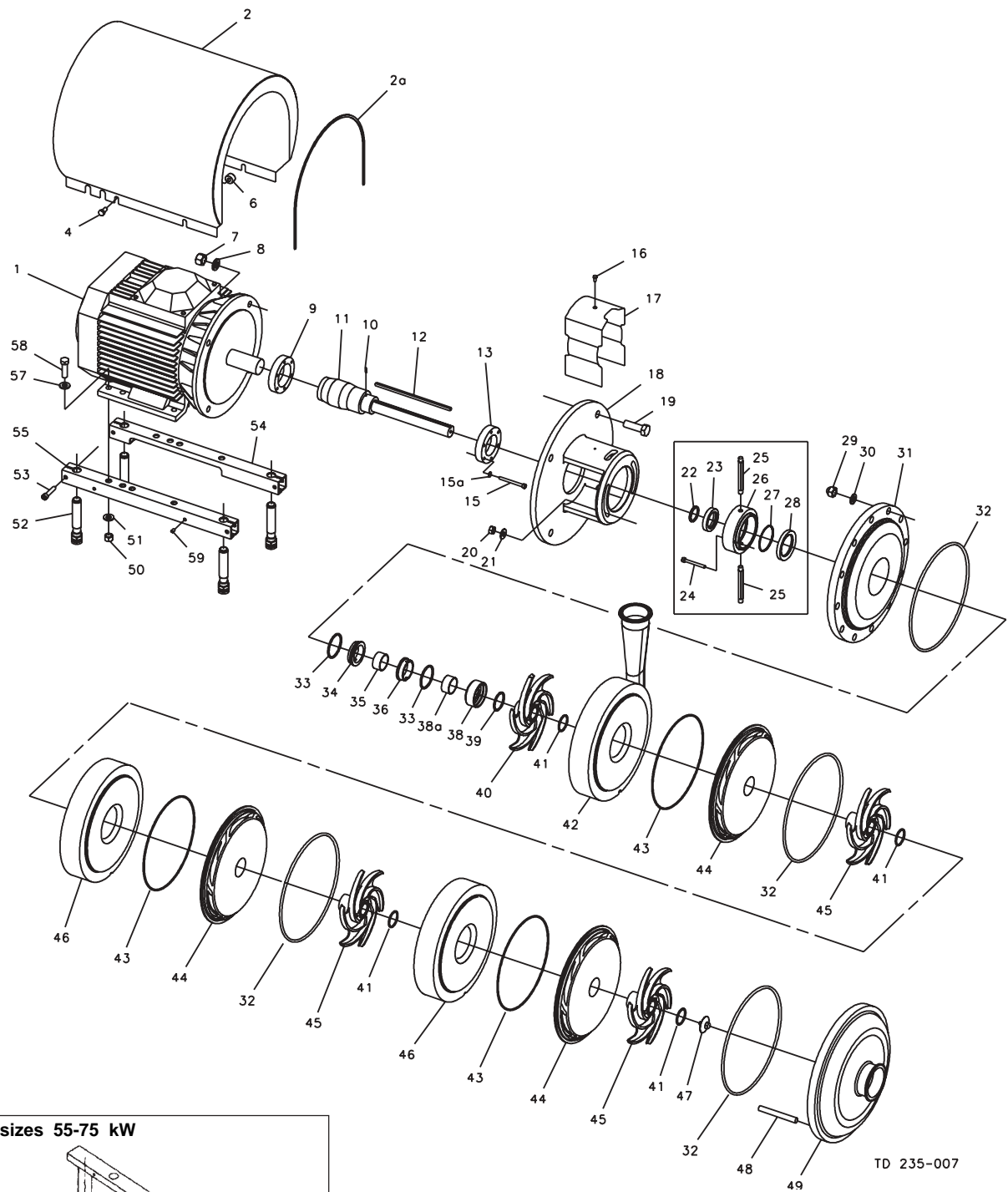
◆	Service kit, EPDM .....	9611-92-2934
◆	Service kit, NBR .....	9611-92-2935
◆	Service kit, FPM .....	9611-92-2936

**Service kit for flushed shaft seal**

○	Service kit, EPDM .....	9611-92-2937
○	Service kit, NBR .....	9611-92-2938
○	Service kit, FPM .....	9611-92-2939

Conversion kit single to flushed shaft seal 9611-92-2415 =Pos. 22+23+24+25+26+27+28

Recommended Spare Parts: Service kits



Pos.	Qty.	Denomination	30-45 kW	55-75 kW
4	4	Screw .....	9611-99-3243	9611-99-3243
6	4	Distance sleeve .....	31438-0390-3	
7	4	Nut for adaptor .....	9611-99-2160	9611-99-2160
8	4	Washer for adaptor .....	9611-99-1886	9611-99-1886
9	1	Compression ring with thread .....	9612-1336-07	9612-1336-08
10	1	Connex pin .....	9611-99-0622	9611-99-0622
11	1	Shaft and pin (pos 10) .....	9612-5921-03	9612-5922-03
12	1	Key .....	9611-99-3474	9611-99-3474
13	1	Compression ring without thread .....	9612-1337-07	9612-1337-08
15	6	Screw .....	9611-99-3198	9611-99-3266
15a	6	Washer .....	9611-99-3199	9611-99-3199
16	1	Screw for safety guard .....	9611-99-3239	9611-99-3239
17	1	Safety guard .....	9612-1311-08	9612-5912-02
18	1	Adaptor .....	9612-3427-01	9612-5915-01
19	4	Screw for adaptor .....	9611-99-2164	9611-99-2200
20	4	Nut .....	9611-99-0353	9611-99-0353
21	4	Washer .....	9611-99-2559	9611-99-2559
29	11	Cap nut .....	9611-99-3685	9611-99-3685
30	11	Washer .....	9611-99-3684	9611-99-3684
31	1	Back plate .....	9612-3892-24	9612-3892-24
32◆○	4	O-ring, EPDM (standard) .....	9611-99-3574	9611-99-3574
	4	O-ring, NBR .....	9611-99-3575	9611-99-3575
	4	O-ring, FPM .....	9611-99-3576	9611-99-3576
35	1	Spacing ring .....	9612-3625-03	9612-3625-03
38	1	Rotating seal housing .....	9612-6045-01	9612-6045-01
40	1	Impeller LKH-120P .....	9612-5906-04	9612-5906-04
41◆○	4	O-ring, EPDM (standard) .....	9611-99-3578	9611-99-3578
	4	O-ring, NBR .....	9611-99-3579	9611-99-3579
	4	O-ring, FPM .....	9611-99-3580	9611-99-3580
42	1	Pump casing, flange .....	9612-5923-01	9612-5923-01
	1	Pump casing, clamp .....	9612-5923-02	9612-5923-02
43◆○	3	O-ring, EPDM (standard) .....	9611-99-3582	9611-99-3582
	3	O-ring, NBR .....	9611-99-3583	9611-99-3583
	3	O-ring, FPM .....	9611-99-3584	9611-99-3584
44	3	Guide vanes .....	9612-5903-02	9612-5903-02
45	3	Impeller LKH-120P .....	9612-5906-03	9612-5906-03
46	2	Intermediate casing .....	9612-5909-02	9612-5909-02
47	1	Impeller screw .....	9612-5913-04	9612-5913-04
	1	Impeller screw (Period -0211) .....	9612-5913-01	9612-5913-01
48	11	Bolt .....	9612-3635-08	9612-3635-08
49	1	Pump cover, flange .....	9612-5924-01	9612-5924-01
	1	Pump cover, clamp .....	9612-5924-02	9612-5924-02

**Legs**

50	4	Nut .....	9611-99-0587	9611-99-0935
51	4	Spring washer .....	9611-99-0676	9611-99-3267
52	4	Leg .....	9612-3967-01	
53	4	Screw .....	9611-99-1907	
54	1	Support bar, left .....	9612-3422-01	
55	1	Support bar, right .....	9612-3422-01	
57	4	Washer .....	9611-99-0706	9611-99-3269
58	4	Screw .....	9611-99-3680	9611-99-3268
59	4	Pivot screw .....	9611-99-1763	
60	2	Leg bracket .....		9612-5184-01
61	4	Nut for leg .....		9611-99-3260
62	4	Screw for leg .....		9612-5185-01

Pos.	Qty.	Denomination	30kW	37kW	45kW	55kW	75kW
1	1	Special Motor <sup>1)</sup> .....	9612-6055-20	9612-6055-22	9612-6055-24	9612-6055-26	9612-6055-28
		Special Motor <sup>2)</sup> .....	9612-6055-19	9612-6055-21	9612-6055-23	9612-6055-25	9612-6055-27
2	1	Shroud complete .....	9612-5938-01	9612-5938-01	9612-5938-01	9612-5938-04	9612-5938-04
2a	1	Edge list (included in pos. 2)					

<sup>1)</sup> 3~, 50Hz, 380-420VD/660-690VY -Standard  
<sup>2)</sup> 3~, 50Hz, 220-240VD/380-420VY -Option  
 3~, 60Hz, 440-480VD -Standard  
 3~, 60Hz, 250-280VD/440-480VY -Option

**Tool**

63		Tool .....	9612-9278-01
----	--	------------	--------------

**Service kit for single shaft seal**

◆	Service kit, EPDM .....	9611-92-2940
◆	Service kit, NBR .....	9611-92-2941
◆	Service kit, FPM .....	9611-92-2942

**Service kit for flushed shaft seal**

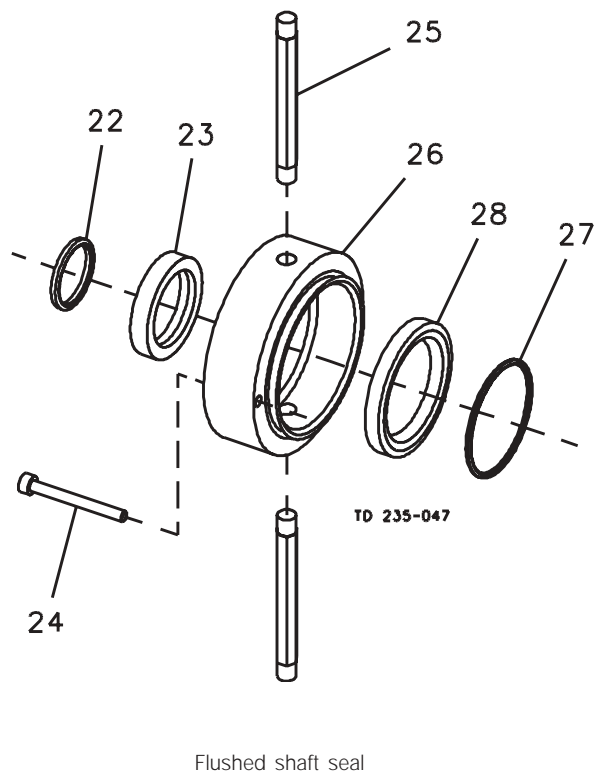
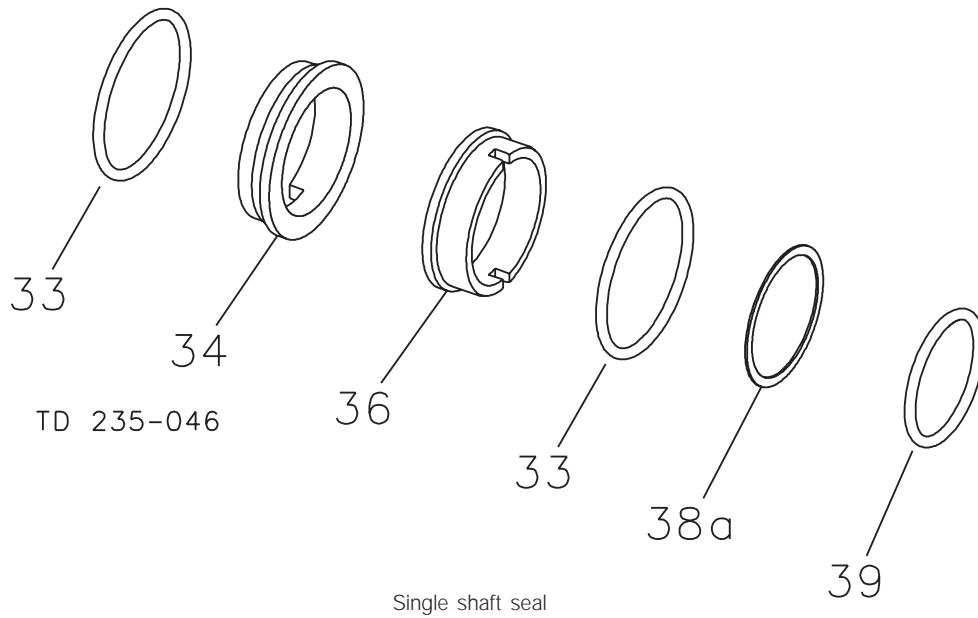
○	Service kit, EPDM .....	9611-92-2943
○	Service kit, NBR .....	9611-92-2944
○	Service kit, FPM .....	9611-92-2945

Parts marked with ◆○ are included in the service kits.

**Conversion kit single to flushed shaft seal**

9611-92-2415 =Pos. 22+23+24+25+26+27+28

**Recommended Spare Parts: Service kits**



Pos.	Qty.	Denomination	30-75kW
<b>For flushed shaft seal</b> .....			
22	1	O-ring, EPDM .....	9611-99-3586
23	1	Sleeve .....	9612-3629-03
24	2	Screw .....	9611-99-4038
25	2	Tube .....	9612-3589-09
26	1	Seal housing for flushed seal .....	9612-3626-03
27	1	O-ring, EPDM .....	9611-99-2753
28	1	Lip seal .....	9611-99-3587
<b>◆○ Shaft seal complete EPDM (standard) .....9612-6024-01</b>			
34	1	Stationary seal ring, Sic. ....	9612-6025-01
36	1	Rotating seal ring, Carbon .....	9612-6026-01
33	2	O-ring, EPDM .....	9611-99-3696
38a	1	Support ring .....	9612-6027-01
39	1	O-ring, EPDM .....	9611-99-3699
<b>◆○ Shaft seal complete NBR.....9612-6024-02</b>			
34	1	Stationary seal ring, Sic. ....	9612-6025-01
36	1	Rotating seal ring, Carbon .....	9612-6026-01
33	2	O-ring, NBR .....	9611-99-3697
38a	1	Support ring .....	9612-6027-01
39	1	O-ring, NBR .....	9611-99-3700
<b>◆○ Shaft seal complete FPM.....9612-6024-03</b>			
34	1	Stationary seal ring, Sic. ....	9612-6025-01
36	1	Rotating seal ring, Carbon .....	9612-6026-01
33	2	O-ring, FPM .....	9611-99-3698
38a	1	Support ring .....	9612-6027-01
39	1	O-ring, FPM .....	9611-99-3701

Pos.	Qty.	Denomination	30-75kW
<b>Alternatives</b>			
<b>Shaft seal complete EPDM .....9612-6024-04</b>			
34	1	Stationary seal ring, Sic. ....	9612-6025-01
36	1	Rotating seal ring, Sic. ....	9612-6026-02
33	2	O-ring, EPDM .....	9611-99-3696
38a	1	Support ring .....	9612-6027-01
39	1	O-ring, EPDM .....	9611-99-3699
<b>Shaft seal complete NBR.....9612-6024-05</b>			
34	1	Stationary seal ring, Sic. ....	9612-6025-01
36	1	Rotating seal ring, Sic. ....	9612-6026-02
33	2	O-ring, NBR .....	9611-99-3697
38a	1	Support ring .....	9612-6027-01
39	1	O-ring, NBR .....	9611-99-3700
<b>Shaft seal complete FPM.....9612-6024-06</b>			
34	1	Stationary seal ring, Sic. ....	9612-6025-01
36	1	Rotating seal ring, Sic. ....	9612-6026-02
33	2	O-ring, FPM .....	9611-99-3698
38a	1	Support ring .....	9612-6027-01
39	1	O-ring, FPM .....	9611-99-3701

900237

**How to contact Alfa Laval**

Contact details for all countries are continually updated on our website.

Please visit [www.alfalaval.com](http://www.alfalaval.com) to access the information direct.